

HCCS Antibody (Center)
Affinity Purified Rabbit Polyclonal Antibody (Pab)
Catalog # AP9883c**Specification**

HCCS Antibody (Center) - Product Information

Application	WB, IHC-P,E
Primary Accession	P53701
Other Accession	Q5F339 , A5PJG7
Reactivity	Human
Predicted	Bovine, Chicken
Host	Rabbit
Clonality	Polyclonal
Isotype	Rabbit IgG
Calculated MW	30602
Antigen Region	173-200

HCCS Antibody (Center) - Additional Information**Gene ID** 3052**Other Names**

Cytochrome c-type heme lyase, CCHL, Holocytochrome c-type synthase, HCCS, CCHL

Target/Specificity

This HCCS antibody is generated from rabbits immunized with a KLH conjugated synthetic peptide between 173-200 amino acids from the Central region of human HCCS.

Dilution

WB~~1:4000

IHC-P~~1:50~100

E~~Use at an assay dependent concentration.

Format

Purified polyclonal antibody supplied in PBS with 0.09% (W/V) sodium azide. This antibody is purified through a protein A column, followed by peptide affinity purification.

Storage

Maintain refrigerated at 2-8°C for up to 2 weeks. For long term storage store at -20°C in small aliquots to prevent freeze-thaw cycles.

Precautions

HCCS Antibody (Center) is for research use only and not for use in diagnostic or therapeutic procedures.

HCCS Antibody (Center) - Protein Information**Name** HCCS ([HGNC:4837](#))

Synonyms CCHL

Function Lyase that catalyzes the covalent linking of the heme group to the cytochrome C apoprotein to produce the mature functional cytochrome.

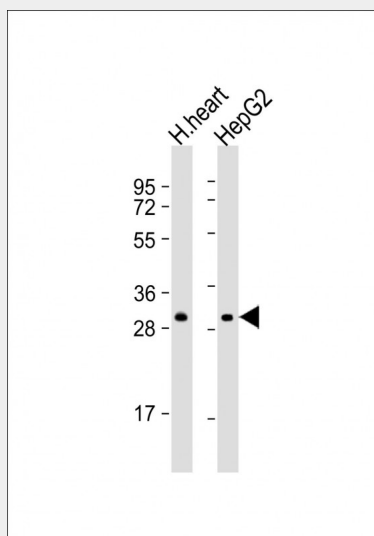
Cellular Location

Mitochondrion inner membrane. Membrane; Lipid-anchor

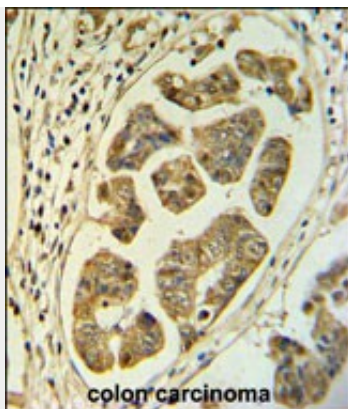
HCCS Antibody (Center) - Protocols

Provided below are standard protocols that you may find useful for product applications.

- [Western Blot](#)
- [Blocking Peptides](#)
- [Dot Blot](#)
- [Immunohistochemistry](#)
- [Immunofluorescence](#)
- [Immunoprecipitation](#)
- [Flow Cytometry](#)
- [Cell Culture](#)

HCCS Antibody (Center) - Images

All lanes : Anti-HCCS Antibody (Center) at 1:4000 dilution Lane 1: human heart lysate Lane 2: HepG2 whole cell lysate Lysates/proteins at 20 µg per lane. Secondary Goat Anti-Rabbit IgG, (H+L), Peroxidase conjugated at 1/10000 dilution. Predicted band size : 31 kDa Blocking/Dilution buffer: 5% NFDM/TBST.



HCCS Antibody (Center) (Cat. #AP9883c) IHC analysis in formalin fixed and paraffin embedded colon carcinoma followed by peroxidase conjugation of the secondary antibody and DAB staining. This data demonstrates the use of the HCCS Antibody (Center) for immunohistochemistry. Clinical relevance has not been evaluated.

HCCS Antibody (Center) - Background

The protein encoded by this gene is an enzyme that covalently links a heme group to the apoprotein of cytochrome c. Defects in this gene are a cause of microphthalmia syndromic type 7 (MCOPS7). Three transcript variants encoding the same protein have been found for this gene.

HCCS Antibody (Center) - References

- Need, A.C., et al. Hum. Mol. Genet. 18(23):4650-4661(2009)
- Wimplinger, I., et al. Mol. Vis. 13, 1475-1482 (2007)
- Wimplinger, I., et al. Am. J. Hum. Genet. 79(5):878-889(2006)
- Nakashima-Kamimura, N., et al. J. Cell. Sci. 118 (PT 22), 5357-5367 (2005)
- Prakash, S.K., et al. Hum. Mol. Genet. 11(25):3237-3248(2002)