

PHAR4 Antibody (C-term)
Affinity Purified Rabbit Polyclonal Antibody (Pab)
Catalog # AP9904b

Specification

PHAR4 Antibody (C-term) - Product Information

Application	WB,E
Primary Accession	O8IZ21
Reactivity	Human
Host	Rabbit
Clonality	Polyclonal
Isotype	Rabbit IgG
Calculated MW	78211
Antigen Region	536-565

PHAR4 Antibody (C-term) - Additional Information

Gene ID 65979

Other Names

Phosphatase and actin regulator 4, PHACTR4

Target/Specificity

This PHAR4 antibody is generated from rabbits immunized with a KLH conjugated synthetic peptide between 536-565 amino acids from the C-terminal region of human PHAR4.

Dilution

WB~~1:1000

E~~Use at an assay dependent concentration.

Format

Purified polyclonal antibody supplied in PBS with 0.09% (W/V) sodium azide. This antibody is purified through a protein A column, followed by peptide affinity purification.

Storage

Maintain refrigerated at 2-8°C for up to 2 weeks. For long term storage store at -20°C in small aliquots to prevent freeze-thaw cycles.

Precautions

PHAR4 Antibody (C-term) is for research use only and not for use in diagnostic or therapeutic procedures.

PHAR4 Antibody (C-term) - Protein Information

Name PHACTR4

Function Regulator of protein phosphatase 1 (PP1) required for neural tube and optic fissure closure, and enteric neural crest cell (ENCCs) migration during development. Acts as an activator

of PP1 by interacting with PPP1CA and preventing phosphorylation of PPP1CA at 'Thr-320'. During neural tube closure, localizes to the ventral neural tube and activates PP1, leading to down-regulate cell proliferation within cranial neural tissue and the neural retina. Also acts as a regulator of migration of enteric neural crest cells (ENCCs) by activating PP1, leading to dephosphorylation and subsequent activation of cofilin (COF1 or COF2) and repression of the integrin signaling through the RHO/ROCK pathway (By similarity).

Cellular Location

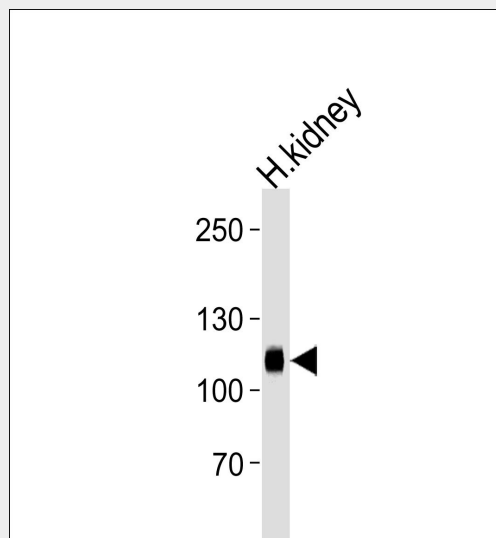
Cytoplasm. Cell projection, lamellipodium

PHAR4 Antibody (C-term) - Protocols

Provided below are standard protocols that you may find useful for product applications.

- [Western Blot](#)
- [Blocking Peptides](#)
- [Dot Blot](#)
- [Immunohistochemistry](#)
- [Immunofluorescence](#)
- [Immunoprecipitation](#)
- [Flow Cytometry](#)
- [Cell Culture](#)

PHAR4 Antibody (C-term) - Images



Western blot analysis of lysate from human kidney tissue lysate, using PHAR4 Antibody (C-term)(Cat. #AP9904b). AP9904b was diluted at 1:1000 at each lane. A goat anti-rabbit IgG H&L(HRP) at 1:5000 dilution was used as the secondary antibody. Lysate at 35ug per lane.

PHAR4 Antibody (C-term) - Background

This gene encodes a member of the phosphatase and actin regulator (PHACTR) family. Other PHACTR family members have been shown to inhibit protein phosphatase 1 (PP1) activity, and the homolog of this gene in the mouse has been shown to interact with actin and PP1. Multiple transcript variants encoding different isoforms have been found for this gene.

PHAR4 Antibody (C-term) - References

Matsuoka, S., et al. Science 316(5828):1160-1166(2007)

Olsen, J.V., et al. Cell 127(3):635-648(2006)

Beausoleil, S.A., et al. Proc. Natl. Acad. Sci. U.S.A. 101(33):12130-12135(2004)

Allen, P.B., et al. Proc. Natl. Acad. Sci. U.S.A. 101(18):7187-7192(2004)

Sagara, J., et al. J. Biol. Chem. 278(46):45611-45619(2003)