

ZN160 Antibody (N-term)
Affinity Purified Rabbit Polyclonal Antibody (Pab)
Catalog # AP9911a**Specification**

ZN160 Antibody (N-term) - Product Information

Application	FC, WB,E
Primary Accession	Q9HCG1
Reactivity	Human
Host	Rabbit
Clonality	Polyclonal
Isotype	Rabbit IgG
Calculated MW	94112
Antigen Region	143-171

ZN160 Antibody (N-term) - Additional Information**Gene ID** 90338**Other Names**

Zinc finger protein 160, Zinc finger protein HZF5, Zinc finger protein Kr18, HKr18, ZNF160, KIAA1611

Target/Specificity

This ZN160 antibody is generated from rabbits immunized with a KLH conjugated synthetic peptide between 143-171 amino acids from the N-terminal region of human ZN160.

Dilution

FC~~1:10~50

WB~~1:1000

E~~Use at an assay dependent concentration.

Format

Purified polyclonal antibody supplied in PBS with 0.09% (W/V) sodium azide. This antibody is purified through a protein A column, followed by peptide affinity purification.

Storage

Maintain refrigerated at 2-8°C for up to 2 weeks. For long term storage store at -20°C in small aliquots to prevent freeze-thaw cycles.

Precautions

ZN160 Antibody (N-term) is for research use only and not for use in diagnostic or therapeutic procedures.

ZN160 Antibody (N-term) - Protein Information**Name** ZNF160

Synonyms KIAA1611

Function May be involved in transcriptional regulation.

Cellular Location
Nucleus.

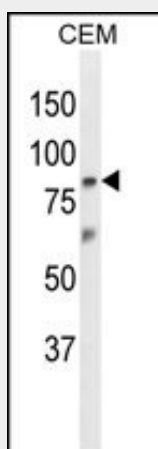
Tissue Location
Ubiquitous..

ZN160 Antibody (N-term) - Protocols

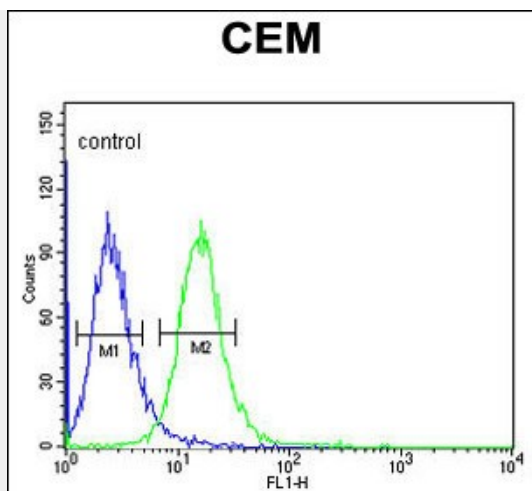
Provided below are standard protocols that you may find useful for product applications.

- [Western Blot](#)
- [Blocking Peptides](#)
- [Dot Blot](#)
- [Immunohistochemistry](#)
- [Immunofluorescence](#)
- [Immunoprecipitation](#)
- [Flow Cytometry](#)
- [Cell Culture](#)

ZN160 Antibody (N-term) - Images



Western blot analysis of ZN160 Antibody (N-term) (Cat. #AP9911a) in CEM cell line lysates (35ug/lane). ZN160 (arrow) was detected using the purified Pab.



ZN160 Antibody (N-term) (Cat. #AP9911a) flow cytometric analysis of CEM cells (right histogram) compared to a negative control cell (left histogram). FITC-conjugated goat-anti-rabbit secondary antibodies were used for the analysis.

ZN160 Antibody (N-term) - Background

The protein encoded by this gene is a Kruppel-related zinc finger protein which is characterized by the presence of an N-terminal repressor domain, the Kruppel-associated box (KRAB). The KRAB domain is a potent repressor of transcription; thus this protein may function in transcription regulation.

ZN160 Antibody (N-term) - References

Takahashi, K., et al. J. Immunol. 183(10):6522-6529(2009)
Mark, C., et al. DNA Cell Biol. 20(5):275-286(2001)
Hattori, A., et al. DNA Res. 7(6):357-366(2000)