

**RPR1B Antibody (C-term)**  
**Affinity Purified Rabbit Polyclonal Antibody (Pab)**  
**Catalog # AP9920b**

**Specification**

---

**RPR1B Antibody (C-term) - Product Information**

Application	FC, WB,E
Primary Accession	<a href="#">O9NQG5</a>
Other Accession	<a href="#">O9CSU0</a>
Reactivity	Human
Predicted	Mouse
Host	Rabbit
Clonality	Polyclonal
Isotype	Rabbit IgG
Calculated MW	36900
Antigen Region	254-282

**RPR1B Antibody (C-term) - Additional Information**

**Gene ID** 58490

**Other Names**

Regulation of nuclear pre-mRNA domain-containing protein 1B, Cell cycle-related and expression-elevated protein in tumor, RPRD1B, C20orf77, CREPT

**Target/Specificity**

This RPR1B antibody is generated from rabbits immunized with a KLH conjugated synthetic peptide between 254-282 amino acids from the C-terminal region of human RPR1B.

**Dilution**

FC~~1:10~50

WB~~1:1000

E~~Use at an assay dependent concentration.

**Format**

Purified polyclonal antibody supplied in PBS with 0.09% (W/V) sodium azide. This antibody is purified through a protein A column, followed by peptide affinity purification.

**Storage**

Maintain refrigerated at 2-8°C for up to 2 weeks. For long term storage store at -20°C in small aliquots to prevent freeze-thaw cycles.

**Precautions**

RPR1B Antibody (C-term) is for research use only and not for use in diagnostic or therapeutic procedures.

**RPR1B Antibody (C-term) - Protein Information**

**Name** RPRD1B

**Synonyms** C20orf77, CREPT

**Function** Interacts with phosphorylated C-terminal heptapeptide repeat domain (CTD) of the largest RNA polymerase II subunit POLR2A, and participates in dephosphorylation of the CTD by RPAP2. Transcriptional regulator which enhances expression of CCND1. Promotes binding of RNA polymerase II to the CCND1 promoter and to the termination region before the poly-A site but decreases its binding after the poly-A site. Prevents RNA polymerase II from reading through the 3' end termination site and may allow it to be recruited back to the promoter through promotion of the formation of a chromatin loop. Also enhances the transcription of a number of other cell cycle-related genes including CDK2, CDK4, CDK6 and cyclin-E but not CDKN1A, CDKN1B or cyclin-A. Promotes cell proliferation.

**Cellular Location**

Nucleus

**Tissue Location**

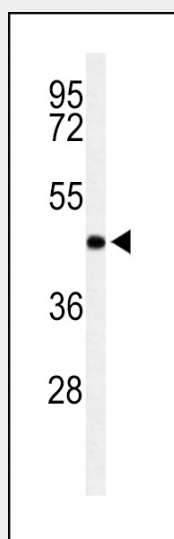
Preferentially expressed in a range of tumor tissues including colon, lung, liver, breast, prostate, stomach, uterine endometrium and cervical cancers with higher levels in tumors than in adjacent non-tumor tissue (at protein level)

**RPR1B Antibody (C-term) - Protocols**

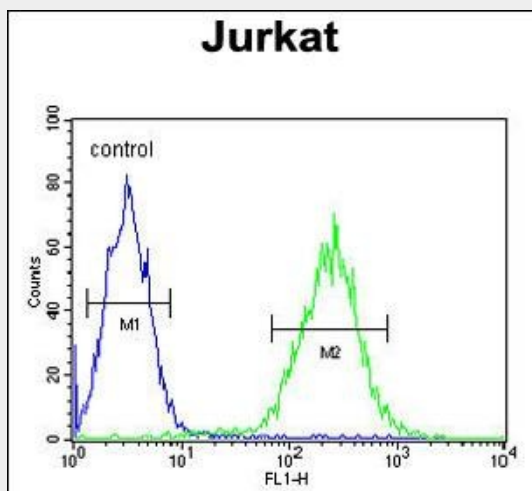
Provided below are standard protocols that you may find useful for product applications.

- [Western Blot](#)
- [Blocking Peptides](#)
- [Dot Blot](#)
- [Immunohistochemistry](#)
- [Immunofluorescence](#)
- [Immunoprecipitation](#)
- [Flow Cytometry](#)
- [Cell Culture](#)

**RPR1B Antibody (C-term) - Images**



Western blot analysis of RPR1B Antibody (C-term) (Cat. #AP9920b) in Jurkat cell line lysates (35ug/lane). RPR1B (arrow) was detected using the purified Pab.



RPR1B Antibody (C-term) (Cat. #AP9920b) flow cytometric analysis of Jurkat cells (right histogram) compared to a negative control cell (left histogram). FITC-conjugated goat-anti-rabbit secondary antibodies were used for the analysis.

#### **RPR1B Antibody (C-term) - References**

- Sugiyama, N., et al. Mol. Cell Proteomics 6(6):1103-1109(2007)  
Olsen, J.V., et al. Cell 127(3):635-648(2006)  
Beausoleil, S.A., et al. Proc. Natl. Acad. Sci. U.S.A. 101(33):12130-12135(2004)