

**ARSI Antibody (C-term)**  
**Affinity Purified Rabbit Polyclonal Antibody (Pab)**  
**Catalog # AP9921b****Specification**

---

**ARSI Antibody (C-term) - Product Information**

Application	FC, WB,E
Primary Accession	<a href="#">Q5FYB1</a>
Other Accession	<a href="#">Q32KI9</a>
Reactivity	Human
Predicted	Mouse
Host	Rabbit
Clonality	Polyclonal
Isotype	Rabbit IgG
Calculated MW	64030
Antigen Region	454-483

**ARSI Antibody (C-term) - Additional Information****Gene ID** 340075**Other Names**

Arylsulfatase I, ASI, 316-, ARSI

**Target/Specificity**

This ARSI antibody is generated from rabbits immunized with a KLH conjugated synthetic peptide between 454-483 amino acids from the C-terminal region of human ARSI.

**Dilution**

FC~~1:10~50

WB~~1:1000

E~~Use at an assay dependent concentration.

**Format**

Purified polyclonal antibody supplied in PBS with 0.09% (W/V) sodium azide. This antibody is purified through a protein A column, followed by peptide affinity purification.

**Storage**

Maintain refrigerated at 2-8°C for up to 2 weeks. For long term storage store at -20°C in small aliquots to prevent freeze-thaw cycles.

**Precautions**

ARSI Antibody (C-term) is for research use only and not for use in diagnostic or therapeutic procedures.

**ARSI Antibody (C-term) - Protein Information****Name** ARSI

**Function** Displays arylsulfatase activity at neutral pH, when co- expressed with SUMF1; arylsulfatase activity is measured in the secretion medium of retinal cell line, but no activity is recorded when measured in cell extracts (PubMed:[19262745](#)). Lacks arylsulfatase activity (PubMed:[16500042](#)).

**Cellular Location**

Secreted. Endoplasmic reticulum. Note=Localized in the intracellular granular structures

**Tissue Location**

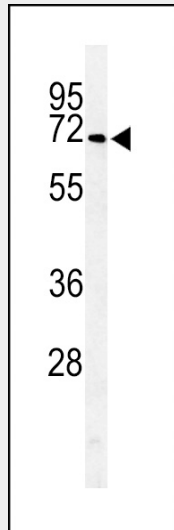
Expressed in placenta, in embryonic stem cells, fetal eyes and lens.

**ARSI Antibody (C-term) - Protocols**

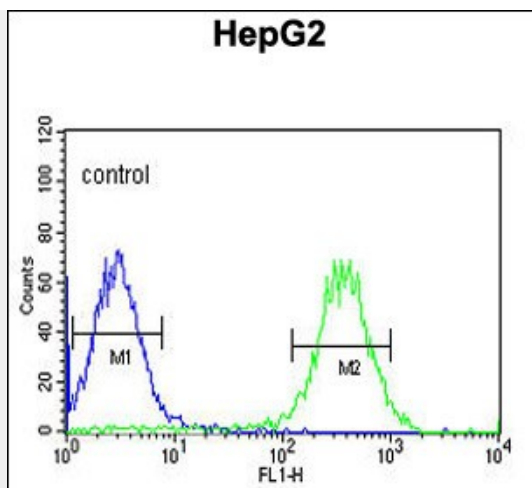
Provided below are standard protocols that you may find useful for product applications.

- [Western Blot](#)
- [Blocking Peptides](#)
- [Dot Blot](#)
- [Immunohistochemistry](#)
- [Immunofluorescence](#)
- [Immunoprecipitation](#)
- [Flow Cytometry](#)
- [Cell Culture](#)

**ARSI Antibody (C-term) - Images**



Western blot analysis of ARSI Antibody (C-term) (Cat. #AP9921b) in HepG2 cell line lysates (35ug/lane). ARSI (arrow) was detected using the purified Pab.



ARSI Antibody (C-term) (Cat. #AP9921b) flow cytometric analysis of HepG2 cells (right histogram) compared to a negative control cell (left histogram). FITC-conjugated goat-anti-rabbit secondary antibodies were used for the analysis.

#### **ARSI Antibody (C-term) - Background**

Sulfatases (EC 3.1.5.6), such as ARSI, hydrolyze sulfate esters from sulfated steroids, carbohydrates, proteoglycans, and glycolipids. They are involved in hormone biosynthesis, modulation of cell signaling, and degradation of macromolecules

#### **ARSI Antibody (C-term) - References**

Oshikawa, M., et al. Mol. Vis. 15, 482-494 (2009)  
Obaya, A.J. Gene 372, 110-117 (2006)  
Sardiello, M., et al. Hum. Mol. Genet. 14(21):3203-3217(2005)