

**PR38A Antibody (C-term)**  
**Affinity Purified Rabbit Polyclonal Antibody (Pab)**  
**Catalog # AP9930b**

**Specification**

---

**PR38A Antibody (C-term) - Product Information**

Application	FC, IHC-P, WB,E
Primary Accession	<a href="#">Q8NAV1</a>
Other Accession	<a href="#">Q4FZO6</a> , <a href="#">Q4FK66</a> , <a href="#">Q8HXH6</a> , <a href="#">Q0P5I6</a>
Reactivity	Human
Predicted	Bovine, Monkey, Mouse, Xenopus
Host	Rabbit
Clonality	Polyclonal
Isotype	Rabbit IgG
Calculated MW	37477
Antigen Region	283-312

**PR38A Antibody (C-term) - Additional Information**

**Gene ID** 84950

**Other Names**

Pre-mRNA-splicing factor 38A, PRPF38A

**Target/Specificity**

This PR38A antibody is generated from rabbits immunized with a KLH conjugated synthetic peptide between 283-312 amino acids from the C-terminal region of human PR38A.

**Dilution**

FC~~1:10~50

IHC-P~~1:50~100

WB~~1:1000

E~~Use at an assay dependent concentration.

**Format**

Purified polyclonal antibody supplied in PBS with 0.09% (W/V) sodium azide. This antibody is purified through a protein A column, followed by peptide affinity purification.

**Storage**

Maintain refrigerated at 2-8°C for up to 2 weeks. For long term storage store at -20°C in small aliquots to prevent freeze-thaw cycles.

**Precautions**

PR38A Antibody (C-term) is for research use only and not for use in diagnostic or therapeutic procedures.

**PR38A Antibody (C-term) - Protein Information**

**Name** PRPF38A

**Function** Involved in pre-mRNA splicing as a component of the spliceosome.

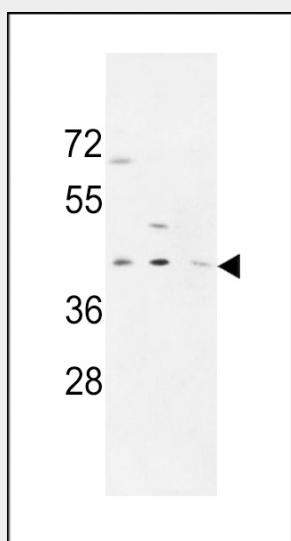
**Cellular Location**  
Nucleus.

#### PR38A Antibody (C-term) - Protocols

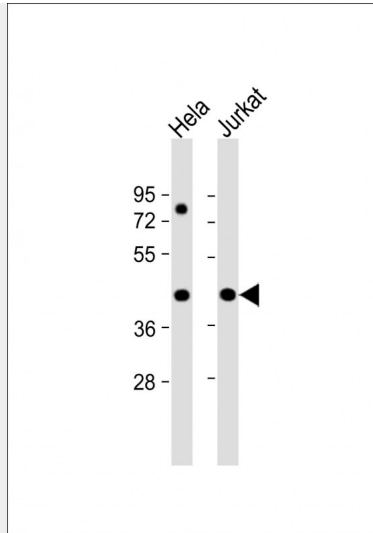
Provided below are standard protocols that you may find useful for product applications.

- [Western Blot](#)
- [Blocking Peptides](#)
- [Dot Blot](#)
- [Immunohistochemistry](#)
- [Immunofluorescence](#)
- [Immunoprecipitation](#)
- [Flow Cytometry](#)
- [Cell Culture](#)

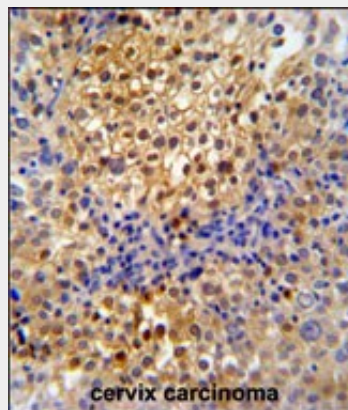
#### PR38A Antibody (C-term) - Images



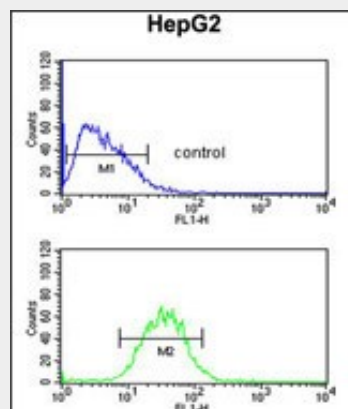
PR38A Antibody (C-term) (Cat. #AP9930b) western blot analysis in MDA-MB231,CEM,HL-60 cell line lysates (35ug/lane).This demonstrates the PR38A antibody detected the PR38A protein (arrow).



All lanes : Anti-PR38A Antibody (C-term) at 1:1000 dilution Lane 1: HeLa whole cell lysate Lane 2: Jurkat whole cell lysate Lysates/proteins at 20 µg per lane. Secondary Goat Anti-Rabbit IgG, (H+L), Peroxidase conjugated at 1/10000 dilution. Predicted band size : 37 kDa Blocking/Dilution buffer: 5% NFDM/TBST.



PR38A Antibody (C-term) (Cat. #AP9930b) immunohistochemistry analysis in formalin fixed and paraffin embedded human cervix carcinoma followed by peroxidase conjugation of the secondary antibody and DAB staining. This data demonstrates the use of the PR38A Antibody (C-term) for immunohistochemistry. Clinical relevance has not been evaluated.



PR38A Antibody (C-term) (Cat. #AP9930b) flow cytometric analysis of HepG2 cells (bottom histogram) compared to a negative control cell (top histogram). FITC-conjugated goat-anti-rabbit secondary antibodies were used for the analysis.

### **PR38A Antibody (C-term) - References**

Beausoleil, S.A., et al. Proc. Natl. Acad. Sci. U.S.A. 101(33):12130-12135(2004)