

**CC058 Antibody (Center)**  
**Affinity Purified Rabbit Polyclonal Antibody (Pab)**  
**Catalog # AP9931c****Specification**

---

**CC058 Antibody (Center) - Product Information**

Application	IHC-P, WB,E
Primary Accession	<a href="#">Q8NDZ4</a>
Other Accession	<a href="#">Q3USZ8</a>
Reactivity	Human, Mouse
Host	Rabbit
Clonality	Polyclonal
Isotype	Rabbit IgG
Calculated MW	49482
Antigen Region	159-188

**CC058 Antibody (Center) - Additional Information****Gene ID** 205428**Other Names**

Deleted in autism protein 1, Golgi Protein of 49 kDa, GoPro49, Hypoxia and AKT-induced stem cell factor, HASF, C3orf58, DIA1

**Target/Specificity**

This CC058 antibody is generated from rabbits immunized with a KLH conjugated synthetic peptide between 159-188 amino acids from the Central region of human CC058.

**Dilution**

IHC-P~~1:50~100

WB~~1:1000

E~~Use at an assay dependent concentration.

**Format**

Purified polyclonal antibody supplied in PBS with 0.09% (W/V) sodium azide. This antibody is purified through a protein A column, followed by peptide affinity purification.

**Storage**

Maintain refrigerated at 2-8°C for up to 2 weeks. For long term storage store at -20°C in small aliquots to prevent freeze-thaw cycles.

**Precautions**

CC058 Antibody (Center) is for research use only and not for use in diagnostic or therapeutic procedures.

**CC058 Antibody (Center) - Protein Information****Name** DIPK2A ([HGNC:28490](#))

**Function** May play a role in cardiomyocyte proliferation through paracrine signaling and activation of the PPI3K-AKT-CDK7 signaling cascade.

**Cellular Location**

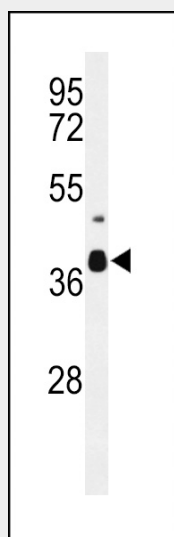
Cytoplasmic vesicle, COPI-coated vesicle. Golgi apparatus. Secreted

**CC058 Antibody (Center) - Protocols**

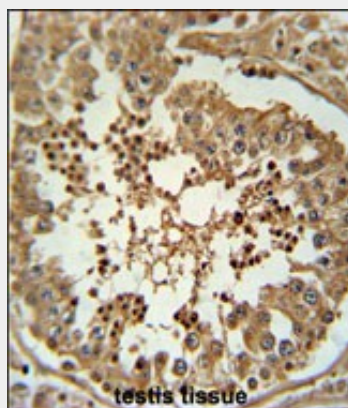
Provided below are standard protocols that you may find useful for product applications.

- [Western Blot](#)
- [Blocking Peptides](#)
- [Dot Blot](#)
- [Immunohistochemistry](#)
- [Immunofluorescence](#)
- [Immunoprecipitation](#)
- [Flow Cytometry](#)
- [Cell Culture](#)

**CC058 Antibody (Center) - Images**



Western blot analysis of CC058 Antibody (Center) (Cat. #AP9931c) in mouse cerebellum tissue lysates (35ug/lane). CC058 (arrow) was detected using the purified Pab.



CC058 Antibody (Center) (Cat. #AP9931c) immunohistochemistry analysis in formalin fixed and paraffin embedded human testis tissue followed by peroxidase conjugation of the secondary antibody and DAB staining. This data demonstrates the use of the CC058 Antibody (Center) for immunohistochemistry. Clinical relevance has not been evaluated.

**CC058 Antibody (Center) - References**

Caporaso, N., et al. PLoS ONE 4 (2), E4653 (2009)  
Takatalo, M., et al. Dev. Dyn. 237(8):2243-2255(2008)  
Murabito, J.M., et al. BMC Med. Genet. 8 SUPPL 1, S6 (2007)