

POLL Antibody (C-term)
Purified Rabbit Polyclonal Antibody (Pab)
Catalog # AP9939b

Specification

POLL Antibody (C-term) - Product Information

Application	WB,E
Primary Accession	Q9UGP5
Other Accession	Q5RKI3 , Q9QXE2 , Q4R380
Reactivity	Human
Predicted	Monkey, Mouse, Rat
Host	Rabbit
Clonality	Polyclonal
Isotype	Rabbit IgG
Calculated MW	63482
Antigen Region	549-575

POLL Antibody (C-term) - Additional Information

Gene ID 27343

Other Names

DNA polymerase lambda, Pol Lambda, 4299-, DNA polymerase beta-2, Pol beta2, DNA polymerase kappa, POLL

Target/Specificity

This POLL antibody is generated from rabbits immunized with a KLH conjugated synthetic peptide between 549-575 amino acids from the C-terminal region of human POLL.

Dilution

WB~~1:1000

Format

Purified polyclonal antibody supplied in PBS with 0.09% (W/V) sodium azide. This antibody is prepared by Saturated Ammonium Sulfate (SAS) precipitation followed by dialysis against PBS.

Storage

Maintain refrigerated at 2-8°C for up to 2 weeks. For long term storage store at -20°C in small aliquots to prevent freeze-thaw cycles.

Precautions

POLL Antibody (C-term) is for research use only and not for use in diagnostic or therapeutic procedures.

POLL Antibody (C-term) - Protein Information

Name POLL ([HGNC:9184](#))

Function DNA polymerase that functions in several pathways of DNA repair (PubMed:[11457865](#), PubMed:[19806195](#), PubMed:[20693240](#), PubMed:[30250067](#)). Involved in base excision repair (BER) responsible for repair of lesions that give rise to abasic (AP) sites in DNA (PubMed:[11457865](#), PubMed:[19806195](#)). Also contributes to DNA double- strand break repair by non-homologous end joining and homologous recombination (PubMed:[19806195](#), PubMed:[20693240](#), PubMed:[30250067](#)). Has both template-dependent and template-independent (terminal transferase) DNA polymerase activities (PubMed:[10887191](#), PubMed:[10982892](#), PubMed:[12809503](#), PubMed:[14627824](#), PubMed:[15537631](#), PubMed:[19806195](#)). Also has a 5'-deoxyribose-5-phosphate lyase (dRP lyase) activity (PubMed:[11457865](#), PubMed:[19806195](#)).

Cellular Location

Nucleus. Chromosome. Note=Accumulates at sites of DNA damage

Tissue Location

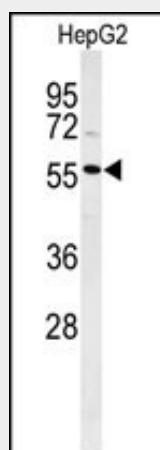
Expressed in a number of tissues. Abundant in testis.

POLL Antibody (C-term) - Protocols

Provided below are standard protocols that you may find useful for product applications.

- [Western Blot](#)
- [Blocking Peptides](#)
- [Dot Blot](#)
- [Immunohistochemistry](#)
- [Immunofluorescence](#)
- [Immunoprecipitation](#)
- [Flow Cytometry](#)
- [Cell Culture](#)

POLL Antibody (C-term) - Images



Western blot analysis of POLL Antibody (C-term) (Cat. #AP9939b) in HepG2 cell line lysates (35ug/lane). POLL (arrow) was detected using the purified Pab.

POLL Antibody (C-term) - Background

This gene encodes a DNA polymerase. DNA polymerases catalyze DNA-template-directed extension of the 3'-end of a DNA strand. This particular polymerase, which is a member of the X family of DNA polymerases, likely plays a role in non-homologous end joining and other DNA repair processes.

POLL Antibody (C-term) - References

Brown, J.A., et al. J. Mol. Biol. 395(2):282-290(2010)
van Loon, B., et al. Proc. Natl. Acad. Sci. U.S.A. 106(43):18201-18206(2009)
Garcia-Diaz, M., et al. Nat. Struct. Mol. Biol. 16(9):967-972(2009)