

**CFP Antibody (Center)**  
**Affinity Purified Rabbit Polyclonal Antibody (Pab)**  
**Catalog # AP9941c****Specification**

---

**CFP Antibody (Center) - Product Information**

Application	WB, FC,E
Primary Accession	<a href="#">P27918</a>
Reactivity	Human
Host	Rabbit
Clonality	Polyclonal
Isotype	Rabbit IgG
Calculated MW	51276
Antigen Region	197-223

**CFP Antibody (Center) - Additional Information****Gene ID** 5199**Other Names**

Properdin, Complement factor P, CFP, PFC

**Target/Specificity**

This CFP antibody is generated from rabbits immunized with a KLH conjugated synthetic peptide between 197-223 amino acids from the Central region of human CFP.

**Dilution**

WB~~1:500

FC~~1:10~50

E~~Use at an assay dependent concentration.

**Format**

Purified polyclonal antibody supplied in PBS with 0.09% (W/V) sodium azide. This antibody is purified through a protein A column, followed by peptide affinity purification.

**Storage**

Maintain refrigerated at 2-8°C for up to 2 weeks. For long term storage store at -20°C in small aliquots to prevent freeze-thaw cycles.

**Precautions**

CFP Antibody (Center) is for research use only and not for use in diagnostic or therapeutic procedures.

**CFP Antibody (Center) - Protein Information****Name** CFP ([HGNC:8864](#))**Synonyms** PFC

**Function** A positive regulator of the alternate pathway (AP) of complement (PubMed:[16301317](#), PubMed:[20382442](#), PubMed:[28264884](#), PubMed:[9748277](#)). It binds to and stabilizes the C3- and C5-convertase enzyme complexes (PubMed:[16301317](#), PubMed:[20382442](#), PubMed:[28264884](#), PubMed:[9748277](#)). Inhibits CFI-CFH mediated degradation of Complement C3 beta chain (C3b) (PubMed:[31507604](#)).

#### **Cellular Location**

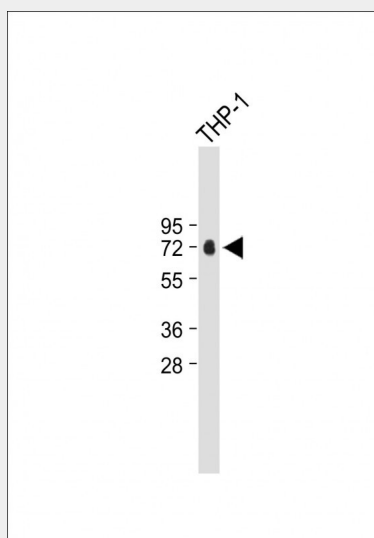
Secreted

#### **CFP Antibody (Center) - Protocols**

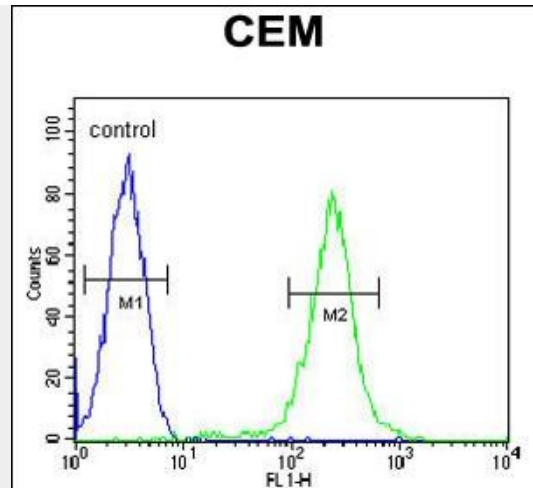
Provided below are standard protocols that you may find useful for product applications.

- [Western Blot](#)
- [Blocking Peptides](#)
- [Dot Blot](#)
- [Immunohistochemistry](#)
- [Immunofluorescence](#)
- [Immunoprecipitation](#)
- [Flow Cytometry](#)
- [Cell Culture](#)

#### **CFP Antibody (Center) - Images**



Anti-CFP Antibody (Center) at 1:500 dilution + THP-1 whole cell lysate Lysates/proteins at 20 µg per lane. Secondary Goat Anti-Rabbit IgG, (H+L), Peroxidase conjugated at 1/10000 dilution. Predicted band size : 51 kDa Blocking/Dilution buffer: 5% NFDm/TBST.



CFP Antibody (Center) (Cat. #AP9941c) flow cytometric analysis of CEM cells (right histogram) compared to a negative control cell (left histogram). FITC-conjugated goat-anti-rabbit secondary antibodies were used for the analysis.

### CFP Antibody (Center) - Background

This gene encodes a plasma glycoprotein that positively regulates the alternative complement pathway of the innate immune system. This protein binds to many microbial surfaces and apoptotic cells and stabilizes the C3- and C5-convertase enzyme complexes in a feedback loop that ultimately leads to formation of the membrane attack complex and lysis of the target cell. Mutations in this gene result in two forms of properdin deficiency, which results in high susceptibility to meningococcal infections.

### CFP Antibody (Center) - References

- Seitsonen, S., et al. Mol. Immunol. 47(6):1334-1336(2010)
- Chapuis, J., et al. Mol. Psychiatry 14(11):1004-1016(2009)
- Wolf-Schnurrbusch, U.E., et al. Retina (Philadelphia, Pa.) 29(7):966-973(2009)
- Keslar, K., et al. Transplantation 86(9):1319-1321(2008)
- Hartmann, S., et al. J. Biol. Chem. 275(37):28569-28574(2000)