

SNX27 Antibody (Center)
Affinity Purified Rabbit Polyclonal Antibody (Pab)
Catalog # AP9947c**Specification**

SNX27 Antibody (Center) - Product Information

Application	WB,E
Primary Accession	Q96L92
Other Accession	Q8K4V4 , Q3UHD6 , A5PKA5
Reactivity	Human
Predicted	Bovine, Mouse, Rat
Host	Rabbit
Clonality	Polyclonal
Isotype	Rabbit IgG
Calculated MW	61265
Antigen Region	313-340

SNX27 Antibody (Center) - Additional Information**Gene ID** 81609**Other Names**

Sorting nexin-27, SNX27, KIAA0488

Target/Specificity

This SNX27 antibody is generated from rabbits immunized with a KLH conjugated synthetic peptide between 313-340 amino acids from the Central region of human SNX27.

Dilution

WB~~1:1000

E~~Use at an assay dependent concentration.

Format

Purified polyclonal antibody supplied in PBS with 0.09% (W/V) sodium azide. This antibody is purified through a protein A column, followed by peptide affinity purification.

Storage

Maintain refrigerated at 2-8°C for up to 2 weeks. For long term storage store at -20°C in small aliquots to prevent freeze-thaw cycles.

Precautions

SNX27 Antibody (Center) is for research use only and not for use in diagnostic or therapeutic procedures.

SNX27 Antibody (Center) - Protein Information**Name** SNX27

Synonyms KIAA0488

Function Involved in the retrograde transport from endosome to plasma membrane, a trafficking pathway that promotes the recycling of internalized transmembrane proteins. Following internalization, endocytosed transmembrane proteins are delivered to early endosomes and recycled to the plasma membrane instead of being degraded in lysosomes. SNX27 specifically binds and directs sorting of a subset of transmembrane proteins containing a PDZ-binding motif at the C-terminus: following interaction with target transmembrane proteins, associates with the retromer complex, preventing entry into the lysosomal pathway, and promotes retromer-tubule based plasma membrane recycling. SNX27 also binds with the WASH complex. Interacts with membranes containing phosphatidylinositol-3-phosphate (PtdIns(3P)). May participate in establishment of natural killer cell polarity. Recruits CYTIP to early endosomes.

Cellular Location

Early endosome membrane; Peripheral membrane protein. Cytoplasm, cytosol. Note=Localizes to immunological synapse in T-cells. In T- cells, recruited from the cytosol to sorting endosomes by phosphoinositide-3-kinase products

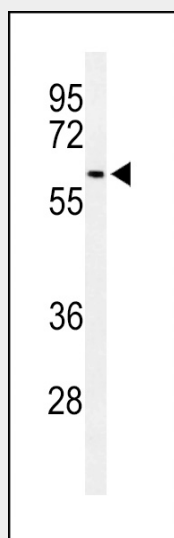
Tissue Location

Widely expressed. Expressed in cells of hematopoietic origin (at protein level).

SNX27 Antibody (Center) - Protocols

Provided below are standard protocols that you may find useful for product applications.

- [Western Blot](#)
- [Blocking Peptides](#)
- [Dot Blot](#)
- [Immunohistochemistry](#)
- [Immunofluorescence](#)
- [Immunoprecipitation](#)
- [Flow Cytometry](#)
- [Cell Culture](#)

SNX27 Antibody (Center) - Images

Western blot analysis of SNX27 Antibody (Center) (Cat. #AP9947c) in 293 cell line lysates

(35ug/lane). SNX27 (arrow) was detected using the purified Pab.

SNX27 Antibody (Center) - Background

SNX27 encodes a member of the sorting nexin family, a diverse group of cytoplasmic and membrane-associated proteins involved in endocytosis of plasma membrane receptors and protein trafficking through these compartments. All members of this protein family contain a phosphoinositide binding domain (PX domain). A highly similar protein in mouse is responsible for the specific recruitment of an isoform of serotonin 5-hydroxytryptamine 4 receptor into early endosomes, suggesting the analogous role for the human protein.

SNX27 Antibody (Center) - References

Lunn, M.L., et al. Nat. Neurosci. 10(10):1249-1259(2007)
Nassirpour, R., et al. Channels (Austin) 1(5):331-333(2007)
MacNeil, A.J., et al. Biochem. Biophys. Res. Commun. 359(4):848-853(2007)
Rincon, E., et al. Mol. Cell Proteomics 6(6):1073-1087(2007)