

CNPY2 Antibody (C-term)
Affinity Purified Rabbit Polyclonal Antibody (Pab)
Catalog # AP9953b**Specification**

CNPY2 Antibody (C-term) - Product Information

Application	FC, WB,E
Primary Accession	O9Y2B0
Other Accession	O9OXT0
Reactivity	Human
Predicted	Mouse
Host	Rabbit
Clonality	Polyclonal
Isotype	Rabbit IgG
Calculated MW	20652
Antigen Region	134-162

CNPY2 Antibody (C-term) - Additional Information**Gene ID** 10330**Other Names**

Protein canopy homolog 2, MIR-interacting saposin-like protein, Putative secreted protein Zsig9, Transmembrane protein 4, CNPY2, MSAP, TMEM4, ZSIG9

Target/Specificity

This CNPY2 antibody is generated from rabbits immunized with a KLH conjugated synthetic peptide between 134-162 amino acids from the C-terminal region of human CNPY2.

Dilution

FC~~1:10~50

WB~~1:1000

E~~Use at an assay dependent concentration.

Format

Purified polyclonal antibody supplied in PBS with 0.09% (W/V) sodium azide. This antibody is purified through a protein A column, followed by peptide affinity purification.

Storage

Maintain refrigerated at 2-8°C for up to 2 weeks. For long term storage store at -20°C in small aliquots to prevent freeze-thaw cycles.

Precautions

CNPY2 Antibody (C-term) is for research use only and not for use in diagnostic or therapeutic procedures.

CNPY2 Antibody (C-term) - Protein Information

Name CNPY2

Synonyms MSAP, TMEM4, ZSIG9

Function Positive regulator of neurite outgrowth by stabilizing myosin regulatory light chain (MRLC). It prevents MIR-mediated MRLC ubiquitination and its subsequent proteasomal degradation.

Cellular Location

Endoplasmic reticulum {ECO:0000255|PROSITE- ProRule:PRU10138}

Tissue Location

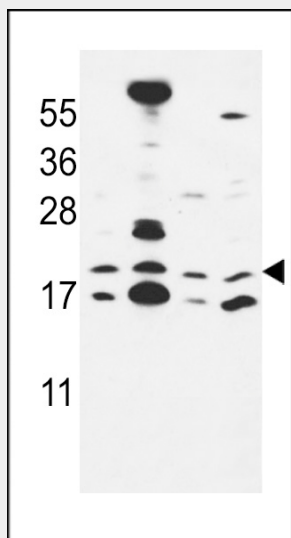
Expressed in different tissues. Highest levels are detected in adult placenta, liver and pancreas

CNPY2 Antibody (C-term) - Protocols

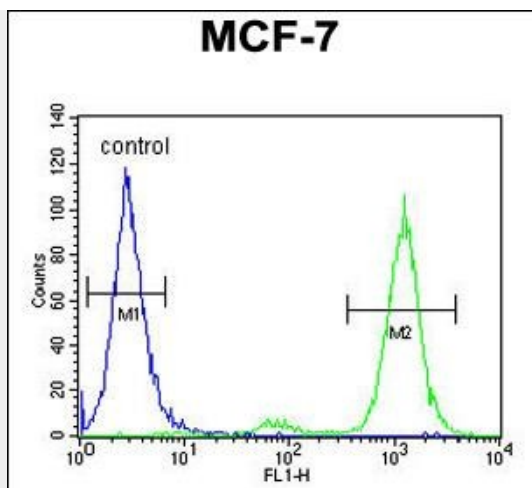
Provided below are standard protocols that you may find useful for product applications.

- [Western Blot](#)
- [Blocking Peptides](#)
- [Dot Blot](#)
- [Immunohistochemistry](#)
- [Immunofluorescence](#)
- [Immunoprecipitation](#)
- [Flow Cytometry](#)
- [Cell Culture](#)

CNPY2 Antibody (C-term) - Images



CNPY2 Antibody (C-term) (Cat. #AP9953b) western blot analysis in MCF-7, NCI-H460, HepG2, Hela cell line lysates (35ug/lane). This demonstrates the CNPY2 antibody detected the CNPY2 protein (arrow).



CNPY2 Antibody (C-term) (Cat. #AP9953b) flow cytometric analysis of MCF-7 cells (right histogram) compared to a negative control cell (left histogram). FITC-conjugated goat-anti-rabbit secondary antibodies were used for the analysis.

CNPY2 Antibody (C-term) - Background

CNPY2 is positive regulator of neurite outgrowth by stabilizing myosin regulatory light chain (MRLC). It prevents MIR-mediated MRLC ubiquitination and its subsequent proteasomal degradation.

CNPY2 Antibody (C-term) - References

Trynka, G., et al. Gut 58(8):1078-1083(2009)
Bornhauser, B.C., et al. Cell. Mol. Life Sci. 62(11):1260-1266(2005)
Clark, H.F., et al. Genome Res. 13(10):2265-2270(2003)