

FAM44B Antibody (C-term)
Affinity Purified Rabbit Polyclonal Antibody (Pab)
Catalog # AP9969a

Specification

FAM44B Antibody (C-term) - Product Information

Application	FC, IHC-P, WB,E
Primary Accession	Q96IK1
Other Accession	Q6AYJ2 , Q5SQY2
Reactivity	Human
Predicted	Mouse, Rat
Host	Rabbit
Clonality	Polyclonal
Isotype	Rabbit IgG
Calculated MW	19196
Antigen Region	127-155

FAM44B Antibody (C-term) - Additional Information

Gene ID 91272

Other Names

Biorientation of chromosomes in cell division protein 1, Biorientation defective protein 1, Protein FAM44B, BOD1, FAM44B

Target/Specificity

This FAM44B antibody is generated from rabbits immunized with a KLH conjugated synthetic peptide between 127-155 amino acids from the C-terminal region of human FAM44B.

Dilution

FC~~1:10~50

IHC-P~~1:50~100

WB~~1:1000

E~~Use at an assay dependent concentration.

Format

Purified polyclonal antibody supplied in PBS with 0.09% (W/V) sodium azide. This antibody is purified through a protein A column, followed by peptide affinity purification.

Storage

Maintain refrigerated at 2-8°C for up to 2 weeks. For long term storage store at -20°C in small aliquots to prevent freeze-thaw cycles.

Precautions

FAM44B Antibody (C-term) is for research use only and not for use in diagnostic or therapeutic procedures.

FAM44B Antibody (C-term) - Protein Information

Name BOD1

Synonyms FAM44B

Function Required for proper chromosome biorientation through the detection or correction of syntelic attachments in mitotic spindles.

Cellular Location

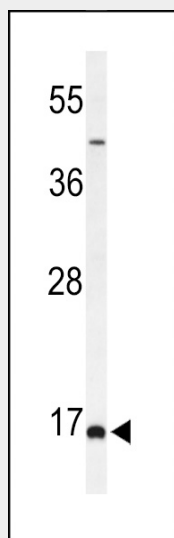
Cytoplasm, cytoskeleton, microtubule organizing center, centrosome. Chromosome, centromere, kinetochore. Note=Localizes at the centrosomes throughout the cell cycle, only dissociating during cytokinesis. Localizes at the kinetochore from prometaphase until anaphase

FAM44B Antibody (C-term) - Protocols

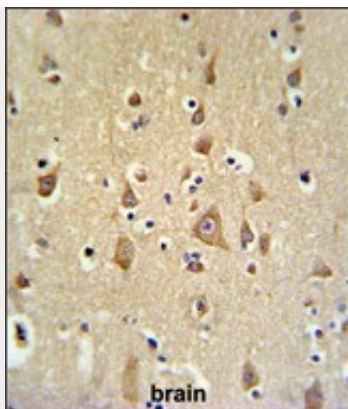
Provided below are standard protocols that you may find useful for product applications.

- [Western Blot](#)
- [Blocking Peptides](#)
- [Dot Blot](#)
- [Immunohistochemistry](#)
- [Immunofluorescence](#)
- [Immunoprecipitation](#)
- [Flow Cytometry](#)
- [Cell Culture](#)

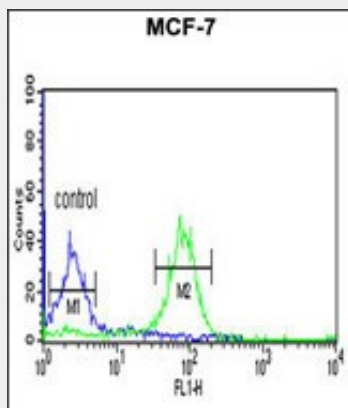
FAM44B Antibody (C-term) - Images



Western blot analysis of FAM44B Antibody (C-term) (Cat. #AP9969a) in MCF-7 cell line lysates (35ug/lane). FAM44B (arrow) was detected using the purified Pab.



FAM44B Antibody (C-term) (Cat. #AP9969a) IHC analysis in formalin fixed and paraffin embedded brain tissue followed by peroxidase conjugation of the secondary antibody and DAB staining. This data demonstrates the use of the FAM44B Antibody (C-term) for immunohistochemistry. Clinical relevance has not been evaluated.



FAM44B Antibody (C-term) (Cat. #AP9969a) flow cytometric analysis of MCF-7 cells (right histogram) compared to a negative control cell (left histogram). FITC-conjugated goat-anti-rabbit secondary antibodies were used for the analysis.

FAM44B Antibody (C-term) - Background

FAM44B required for proper chromosome biorientation through the detection or correction of syntelic attachments in mitotic spindles.

FAM44B Antibody (C-term) - References

Ling, H., et al. Obesity (Silver Spring) 17(4):737-744(2009)
Porter, I.M., et al. J. Cell Biol. 179(2):187-197(2007)