

**M11D1 Antibody (N-term)**  
**Affinity Purified Rabbit Polyclonal Antibody (Pab)**  
**Catalog # AP9974a**

**Specification**

---

**M11D1 Antibody (N-term) - Product Information**

Application	FC, WB, IHC-P,E
Primary Accession	<a href="#">Q9H7H0</a>
Reactivity	Human
Host	Rabbit
Clonality	Polyclonal
Isotype	Rabbit IgG
Calculated MW	50734
Antigen Region	88-116

**M11D1 Antibody (N-term) - Additional Information**

**Gene ID** 64745

**Other Names**

Methyltransferase-like protein 17, mitochondrial, 211-, False p73 target gene protein, Methyltransferase 11 domain-containing protein 1, Protein RSM22 homolog, mitochondrial, METTL17, METT11D1

**Target/Specificity**

This M11D1 antibody is generated from rabbits immunized with a KLH conjugated synthetic peptide between 88-116 amino acids from the N-terminal region of human M11D1.

**Dilution**

FC~~1:10~50

WB~~1:1000

IHC-P~~1:50~100

E~~Use at an assay dependent concentration.

**Format**

Purified polyclonal antibody supplied in PBS with 0.09% (W/V) sodium azide. This antibody is purified through a protein A column, followed by peptide affinity purification.

**Storage**

Maintain refrigerated at 2-8°C for up to 2 weeks. For long term storage store at -20°C in small aliquots to prevent freeze-thaw cycles.

**Precautions**

M11D1 Antibody (N-term) is for research use only and not for use in diagnostic or therapeutic procedures.

**M11D1 Antibody (N-term) - Protein Information**

**Name** METTL17 {ECO:0000303|PubMed:36482135, ECO:0000312|HGNC:HGNC:19280}

**Function** Mitochondrial ribosome (mitoribosome) assembly factor (PubMed:[36482135](#), PubMed:[38199006](#)). Binds at the interface of the head and body domains of the mitochondrial small ribosomal subunit (mt-SSU), occluding the mRNA channel and preventing compaction of the head domain towards the body (PubMed:[36482135](#)). Probable inactive methyltransferase: retains the characteristic folding and ability to bind S-adenosyl-L-methionine, but it probably lost its methyltransferase activity (PubMed:[38234605](#)).

**Cellular Location**

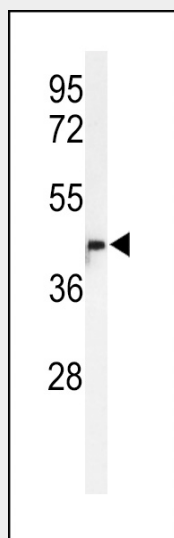
Mitochondrion matrix {ECO:0000250|UniProtKB:Q3U2U7}

**M11D1 Antibody (N-term) - Protocols**

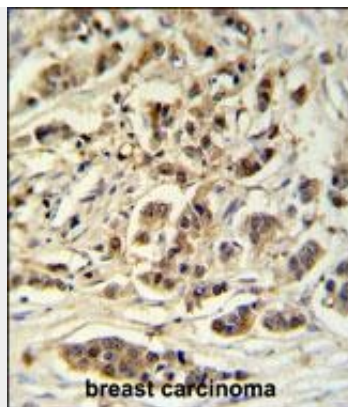
Provided below are standard protocols that you may find useful for product applications.

- [Western Blot](#)
- [Blocking Peptides](#)
- [Dot Blot](#)
- [Immunohistochemistry](#)
- [Immunofluorescence](#)
- [Immunoprecipitation](#)
- [Flow Cytometry](#)
- [Cell Culture](#)

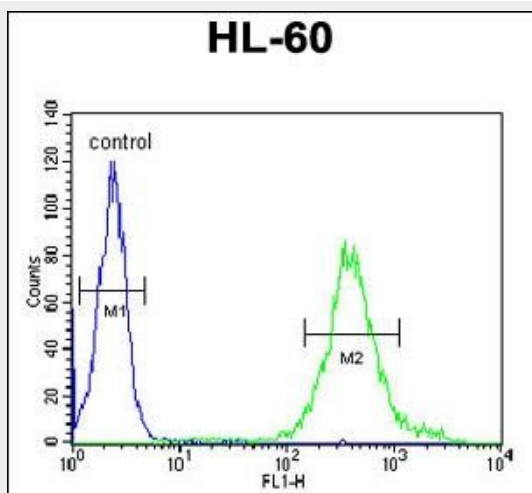
**M11D1 Antibody (N-term) - Images**



Western blot analysis of M11D1 Antibody (N-term) (Cat. #AP9974a) in HL-60 cell line lysates (35ug/lane). M11D1 (arrow) was detected using the purified Pab.



M11D1 Antibody (N-term) (Cat. #AP9974a) IHC analysis in formalin fixed and paraffin embedded breast carcinoma followed by peroxidase conjugation of the secondary antibody and DAB staining. This data demonstrates the use of the M11D1 Antibody (N-term) for immunohistochemistry. Clinical relevance has not been evaluated.



M11D1 Antibody (N-term) (Cat. #AP9974a) flow cytometric analysis of HL-60 cells (right histogram) compared to a negative control cell (left histogram). FITC-conjugated goat-anti-rabbit secondary antibodies were used for the analysis.

#### **M11D1 Antibody (N-term) - Background**

M11D1 may be a component of the mitochondrial small ribosomal subunit.

#### **M11D1 Antibody (N-term) - References**

Lim, J., et al. Cell 125(4):801-814(2006)  
Saveanu, C., et al. J. Biol. Chem. 276(19):15861-15867(2001)