

RHBG Antibody (C-term)
Affinity Purified Rabbit Polyclonal Antibody (Pab)
Catalog # AP9979a**Specification**

RHBG Antibody (C-term) - Product Information

Application	FC, IHC-P, WB,E
Primary Accession	Q9H310
Reactivity	Human
Host	Rabbit
Clonality	Polyclonal
Isotype	Rabbit IgG
Calculated MW	49481
Antigen Region	423-450

RHBG Antibody (C-term) - Additional Information**Gene ID** 57127**Other Names**

Ammonium transporter Rh type B, Rhesus blood group family type B glycoprotein, Rh family type B glycoprotein, Rh type B glycoprotein, RHBG

Target/Specificity

This RHBG antibody is generated from rabbits immunized with a KLH conjugated synthetic peptide between 423-450 amino acids from the C-terminal region of human RHBG.

Dilution

FC~~1:10~50

IHC-P~~1:50~100

WB~~1:1000

E~~Use at an assay dependent concentration.

Format

Purified polyclonal antibody supplied in PBS with 0.09% (W/V) sodium azide. This antibody is purified through a protein A column, followed by peptide affinity purification.

Storage

Maintain refrigerated at 2-8°C for up to 2 weeks. For long term storage store at -20°C in small aliquots to prevent freeze-thaw cycles.

Precautions

RHBG Antibody (C-term) is for research use only and not for use in diagnostic or therapeutic procedures.

RHBG Antibody (C-term) - Protein Information**Name** RHBG ([HGNC:14572](#))

Function Ammonium transporter involved in the maintenance of acid-base homeostasis. Transports ammonium and its related derivative methylammonium across the basolateral plasma membrane of epithelial cells likely contributing to renal transepithelial ammonia transport and ammonia metabolism. May transport either $\text{NH}_4(+)$ or NH_3 ammonia species predominantly mediating an electrogenic $\text{NH}_4(+)$ transport (PubMed:[15284342](#), PubMed:[15929723](#), PubMed:[24077989](#)). May act as a CO_2 channel providing for renal acid secretion (PubMed:[24077989](#)).

Cellular Location

Cell membrane; Multi-pass membrane protein. Basolateral cell membrane; Multi-pass membrane protein

Tissue Location

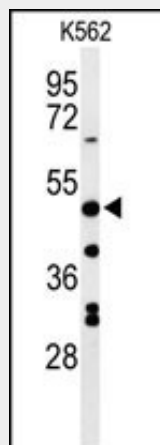
Specifically expressed in kidney. Also detected in liver and ovary.

RHBG Antibody (C-term) - Protocols

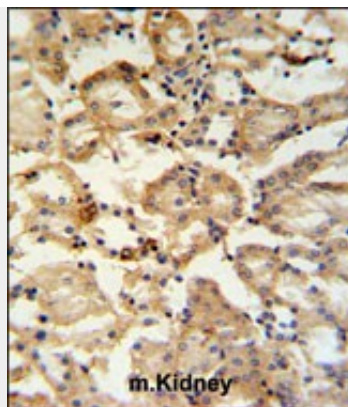
Provided below are standard protocols that you may find useful for product applications.

- [Western Blot](#)
- [Blocking Peptides](#)
- [Dot Blot](#)
- [Immunohistochemistry](#)
- [Immunofluorescence](#)
- [Immunoprecipitation](#)
- [Flow Cytometry](#)
- [Cell Culture](#)

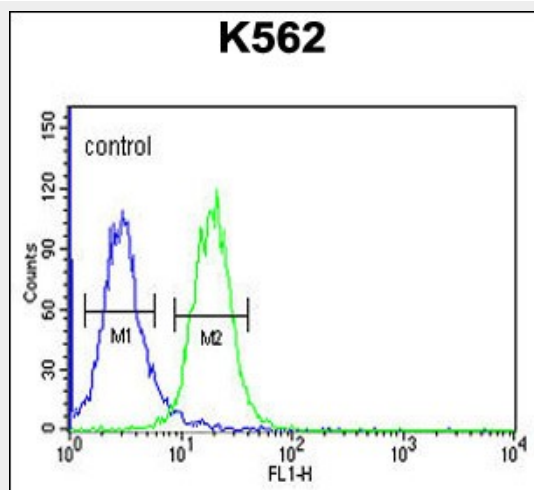
RHBG Antibody (C-term) - Images



Western blot analysis of RHBG Antibody (C-term) (Cat. #AP9979a) in K562 cell line lysates (35ug/lane). RHBG (arrow) was detected using the purified Pab.



RHBG Antibody (C-term) (Cat. #AP9979a) IHC analysis in formalin fixed and paraffin embedded mouse kidney tissue followed by peroxidase conjugation of the secondary antibody and DAB staining. This data demonstrates the use of the RHBG Antibody (C-term) for immunohistochemistry. Clinical relevance has not been evaluated.



RHBG Antibody (C-term) (Cat. #AP9979a) flow cytometric analysis of K562 cells (right histogram) compared to a negative control cell (left histogram). FITC-conjugated goat-anti-rabbit secondary antibodies were used for the analysis.

RHBG Antibody (C-term) - Background

RHBG encodes one of two non-erythroid members of the Rhesus (Rh) protein family. Non-erythroid Rh protein family members are mainly expressed in the kidney and belong to the methylammonium-ammonium permease/ammonia transporters superfamily. All Rh family proteins are predicted to be transmembrane proteins with 12 membrane spanning domains and intracytoplasmic N- and C-termini.

RHBG Antibody (C-term) - References

Han, K.H., et al. Am. J. Physiol. Lung Cell Mol. Physiol. 297 (1), L153-L163 (2009)
Brown, A.C., et al. Am. J. Physiol. Renal Physiol. 296 (6), F1279-F1290 (2009)
Sohet, F., et al. J. Biol. Chem. 283(39):26557-26567(2008)