

**IMP2L Antibody (Center)**  
**Affinity Purified Rabbit Polyclonal Antibody (Pab)**  
**Catalog # AP9993a****Specification**

---

**IMP2L Antibody (Center) - Product Information**

Application	WB, IHC-P, FC,E
Primary Accession	<a href="#">Q96T52</a>
Other Accession	<a href="#">Q8BPT6</a>
Reactivity	Human
Predicted	Mouse
Host	Rabbit
Clonality	Polyclonal
Isotype	Rabbit IgG
Calculated MW	19718
Antigen Region	81-109

**IMP2L Antibody (Center) - Additional Information****Gene ID** 83943**Other Names**

Mitochondrial inner membrane protease subunit 2, 3421-, IMP2-like protein, IMMP2L

**Target/Specificity**

This IMP2L antibody is generated from rabbits immunized with a KLH conjugated synthetic peptide between 81-109 amino acids from the Central region of human IMP2L.

**Dilution**

WB~~1:1000  
IHC-P~~1:50~100  
FC~~1:10~50

**Format**

Purified polyclonal antibody supplied in PBS with 0.09% (W/V) sodium azide. This antibody is purified through a protein A column, followed by peptide affinity purification.

**Storage**

Maintain refrigerated at 2-8°C for up to 2 weeks. For long term storage store at -20°C in small aliquots to prevent freeze-thaw cycles.

**Precautions**

IMP2L Antibody (Center) is for research use only and not for use in diagnostic or therapeutic procedures.

**IMP2L Antibody (Center) - Protein Information****Name** IMMP2L

**Function** Catalyzes the removal of transit peptides required for the targeting of proteins from the mitochondrial matrix, across the inner membrane, into the inter-membrane space. Known to process the nuclear encoded protein DIABLO.

**Cellular Location**

Mitochondrion inner membrane; Single-pass membrane protein

**Tissue Location**

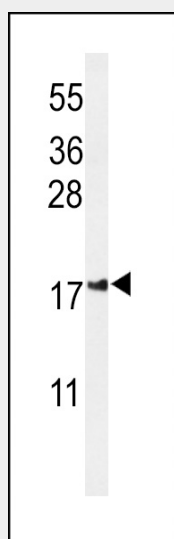
Expressed in all tissues tested except adult liver and lung.

**IMP2L Antibody (Center) - Protocols**

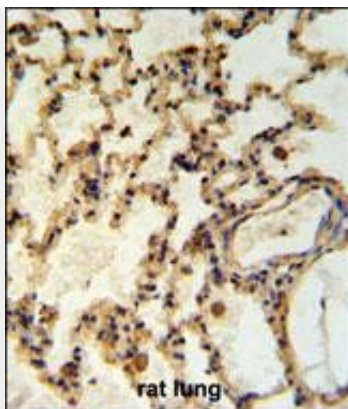
Provided below are standard protocols that you may find useful for product applications.

- [Western Blot](#)
- [Blocking Peptides](#)
- [Dot Blot](#)
- [Immunohistochemistry](#)
- [Immunofluorescence](#)
- [Immunoprecipitation](#)
- [Flow Cytometry](#)
- [Cell Culture](#)

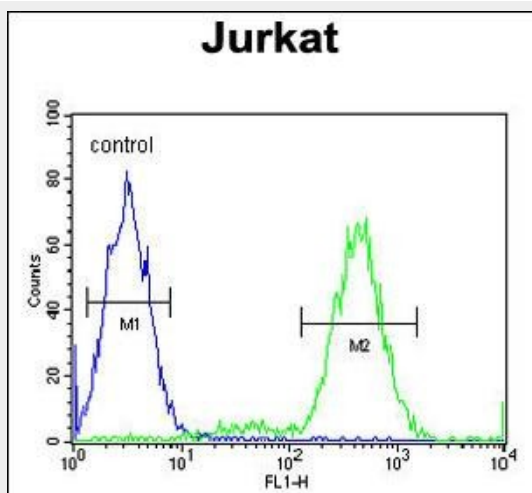
**IMP2L Antibody (Center) - Images**



Western blot analysis of IMP2L Antibody (Center) (Cat. #AP9993a) in Jurkat cell line lysates (35ug/lane). IMP2L (arrow) was detected using the purified Pab.



IMP2L Antibody (Center) (Cat. #AP9993a) IHC analysis in formalin fixed and paraffin embedded rat lung tissue followed by peroxidase conjugation of the secondary antibody and DAB staining. This data demonstrates the use of the IMP2L Antibody (Center) for immunohistochemistry. Clinical relevance has not been evaluated.



IMP2L Antibody (Center) (Cat. #AP9993a) flow cytometric analysis of Jurkat cells (right histogram) compared to a negative control cell (left histogram). FITC-conjugated goat-anti-rabbit secondary antibodies were used for the analysis.

### IMP2L Antibody (Center) - Background

IMP2L complex generates mature, active proteins in the mitochondrial intermembrane space by proteolytically removing the mitochondrial targeting presequence of nuclear-encoded proteins. IMP1 (IMMP1L; MIM 612323) and IMP2 are the catalytic subunits of the IMP complex.

### IMP2L Antibody (Center) - References

Need, A.C., et al. Hum. Mol. Genet. 18(23):4650-4661(2009)  
Trynka, G., et al. Gut 58(8):1078-1083(2009)  
de Krom, M., et al. Biol. Psychiatry 65(7):625-630(2009)