

**Anti-Spike RBD Reference Antibody (Imdevimab)
Recombinant Antibody
Catalog # APR10003****Specification**

Anti-Spike RBD Reference Antibody (Imdevimab) - Product Information

Application	FC, Kinetics, Animal Model
Primary Accession	NA
Reactivity	Influenza A virus
Clonality	Monoclonal
Isotype	IgG1
Calculated MW	144.14 KDa

Anti-Spike RBD Reference Antibody (Imdevimab) - Additional Information**Target/Specificity**

Spike RBD

Endotoxin

< 0.001EU/ µg,determined by LAL method.

Conjugation

Unconjugated

Expression system

CHO Cell

Format

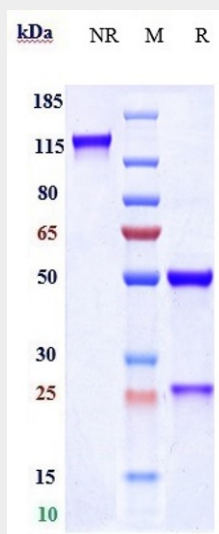
Purified monoclonal antibody supplied in PBS, pH6.0, without preservative.This antibody is purified through a protein A column.

Anti-Spike RBD Reference Antibody (Imdevimab) - Protein Information**Anti-Spike RBD Reference Antibody (Imdevimab) - Protocols**

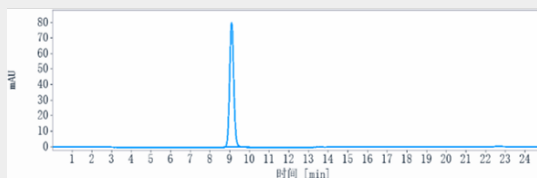
Provided below are standard protocols that you may find useful for product applications.

- [Western Blot](#)
- [Blocking Peptides](#)
- [Dot Blot](#)
- [Immunohistochemistry](#)
- [Immunofluorescence](#)
- [Immunoprecipitation](#)
- [Flow Cytometry](#)
- [Cell Culture](#)

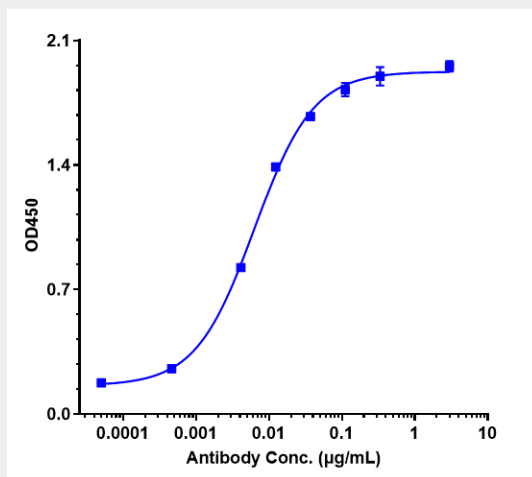
Anti-Spike RBD Reference Antibody (Imdevimab) - Images



Anti-Spike RBD Reference Antibody (Imdevimab) on SDS-PAGE under reducing (R) condition. The gel was stained with Coomassie Blue. The purity of the protein is greater than 95%



The purity of Anti-Spike RBD Reference Antibody (Imdevimab) is more than 99.54% ,determined by SEC-HPLC.



Immobilized 2019nCoV RBD His at 2 µg/mL can bind Anti-Spike RBD Reference Antibody (Imdevimab) $EC_{50}=0.006307$ µg/mL.