

**Anti-CCN2 / CTGF Reference Antibody (pamrevlumab)  
Recombinant Antibody  
Catalog # APR10017****Specification**

---

**Anti-CCN2 / CTGF Reference Antibody (pamrevlumab) - Product Information**

Application	FC, Kinetics, Animal Model
Primary Accession	<a href="#">P29279</a>
Reactivity	Rat, Human, Mouse, Rabbit
Clonality	Monoclonal
Isotype	IgG1
Calculated MW	144.86 KDa

**Anti-CCN2 / CTGF Reference Antibody (pamrevlumab) - Additional Information****Target/Specificity**  
CCN2 / CTGF**Endotoxin**  
< 0.001EU/ µg,determined by LAL method.**Conjugation**  
Unconjugated**Expression system**  
CHO Cell**Format**  
Purified monoclonal antibody supplied in PBS, pH6.0, without preservative.This antibody is purified through a protein A column.**Anti-CCN2 / CTGF Reference Antibody (pamrevlumab) - Protein Information****Name** CCN2 ([HGNC:2500](#))**Function**  
Major connective tissue chemoattractant secreted by vascular endothelial cells. Promotes proliferation and differentiation of chondrocytes. Is involved in the stimulation of osteoblast differentiation and has a critical role in osteogenesis (PubMed:<a href="http://www.uniprot.org/citations/39414788" target="\_blank">39414788</a>). Mediates heparin- and divalent cation-dependent cell adhesion in many cell types including fibroblasts, myofibroblasts, endothelial and epithelial cells. Enhances fibroblast growth factor- induced DNA synthesis.**Cellular Location**  
Secreted, extracellular space, extracellular matrix {ECO:0000250|UniProtKB:P29268}. Secreted**Tissue Location**

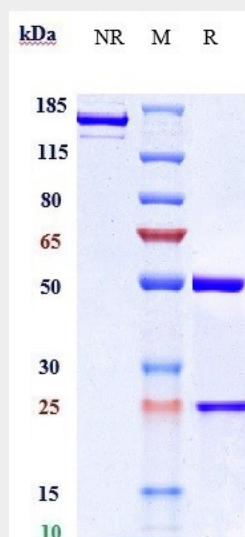
Expressed in bone marrow and thymic cells. Also expressed one of two Wilms tumors tested.

### Anti-CCN2 / CTGF Reference Antibody (pamrevlumab) - Protocols

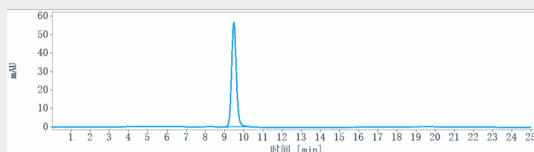
Provided below are standard protocols that you may find useful for product applications.

- [Western Blot](#)
- [Blocking Peptides](#)
- [Dot Blot](#)
- [Immunohistochemistry](#)
- [Immunofluorescence](#)
- [Immunoprecipitation](#)
- [Flow Cytometry](#)
- [Cell Culture](#)

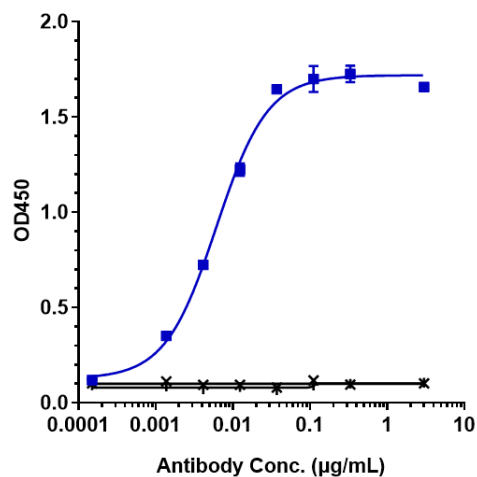
### Anti-CCN2 / CTGF Reference Antibody (pamrevlumab) - Images



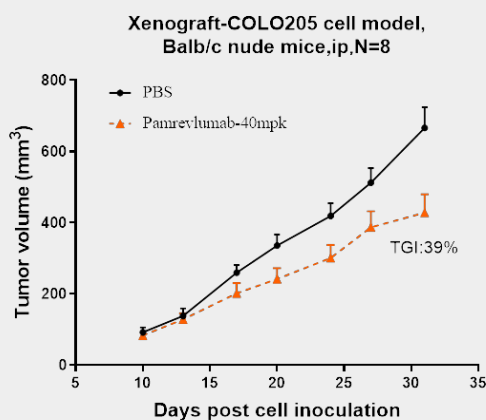
Anti-CCN2 / CTGF Reference Antibody (pamrevlumab) on SDS-PAGE under reducing (R) condition. The gel was stained with Coomassie Blue. The purity of the protein is greater than 95%



The purity of Anti-CCN2 / CTGF Reference Antibody (pamrevlumab) is more than 100% determined by SEC-HPLC.



Immobilized human CTGF His at 2 µg/mL can bind Anti-CCN2 / CTGF Reference Antibody (pamrevlumab)  $EC_{50}=0.006105$  µg/mL.



Pamrevlumab inhibited the tumor growth of COLO205 on Balb/c nude mice. The result showed significant anti-tumor effects, with an tumor inhibition rate (TGI) of 39% at 40 mpk at D31.