

**Anti-CTLA-4 / CD152 Reference Antibody (Antitope patent anti-CTLA4)  
Recombinant Antibody  
Catalog # APR10018****Specification**

---

**Anti-CTLA-4 / CD152 Reference Antibody (Antitope patent anti-CTLA4) - Product Information**

Application	FC, E, FTA
Primary Accession	<a href="#">P16410</a>
Reactivity	Human
Clonality	Monoclonal
Isotype	IgG1
Calculated MW	145 KDa

**Anti-CTLA-4 / CD152 Reference Antibody (Antitope patent anti-CTLA4) - Additional Information****Target/Specificity**

CTLA-4 / CD152

**Endotoxin**

&lt; 0.001EU/ µg,determined by LAL method.

**Conjugation**

Unconjugated

**Expression system**

CHO Cell

**Format**

Purified monoclonal antibody supplied in PBS, pH6.0, without preservative.This antibody is purified through a protein A column.

**Storage**

-80°C for 2 years under sterile conditions □ -20°C for 1 year under sterile conditions □ Avoid repeated freeze-thaw cycles.

**Anti-CTLA-4 / CD152 Reference Antibody (Antitope patent anti-CTLA4) - Protein Information****Name** CTLA4**Synonyms** CD152**Function**

Inhibitory receptor acting as a major negative regulator of T-cell responses. The affinity of CTLA4 for its natural B7 family ligands, CD80 and CD86, is considerably stronger than the affinity of their cognate stimulatory coreceptor CD28.

### Cellular Location

Cell membrane; Single-pass type I membrane protein. Note=Exists primarily an intracellular antigen whose surface expression is tightly regulated by restricted trafficking to the cell surface and rapid internalization

### Tissue Location

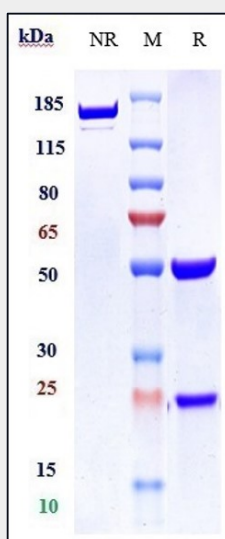
Widely expressed with highest levels in lymphoid tissues. Detected in activated T-cells where expression levels are 30- to 50-fold less than CD28, the stimulatory coreceptor, on the cell surface following activation.

## Anti-CTLA-4 / CD152 Reference Antibody (Antitope patent anti-CTLA4) - Protocols

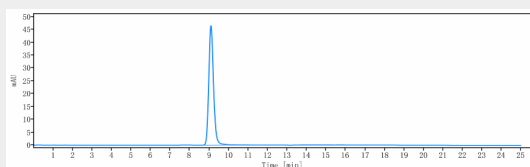
Provided below are standard protocols that you may find useful for product applications.

- [Western Blot](#)
- [Blocking Peptides](#)
- [Dot Blot](#)
- [Immunohistochemistry](#)
- [Immunofluorescence](#)
- [Immunoprecipitation](#)
- [Flow Cytometry](#)
- [Cell Culture](#)

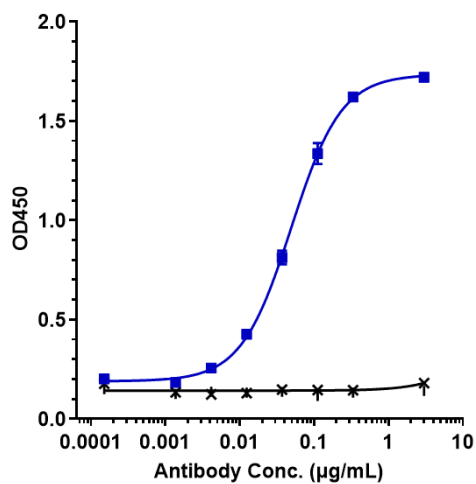
## Anti-CTLA-4 / CD152 Reference Antibody (Antitope patent anti-CTLA4) - Images



Anti-CTLA-4 / CD152 Reference Antibody (Antitope patent anti-CTLA4) on SDS-PAGE under reducing (R) condition. The gel was stained with Coomassie Blue. The purity of the protein is greater than 90%



The purity of Anti-CTLA-4 / CD152 Reference Antibody (Antitope patent anti-CTLA4) is more than 95% ,determined by SEC-HPLC.



Immobilized human CTLA 4 His at 2 µg/mL can bind Anti-CTLA-4 / CD152 Reference Antibody (Antitope patent anti-CTLA4) □EC50=0.04907 µg/mL.