

Anti-CDH1 / E-cadherin / CD324 Reference Antibody (Stem Centrx patent anti-Cadherin-1)
Recombinant Antibody
Catalog # APR10020

Specification

Anti-CDH1 / E-cadherin / CD324 Reference Antibody (Stem Centrx patent anti-Cadherin-1) - Product Information

Application	FC, E, FTA
Primary Accession	P12830
Reactivity	Human, Mouse
Clonality	Monoclonal
Isotype	IgG1
Calculated MW	146.6 KDa

Anti-CDH1 / E-cadherin / CD324 Reference Antibody (Stem Centrx patent anti-Cadherin-1) - Additional Information

Target/Specificity

CDH1 / E-cadherin / CD324

Endotoxin

< 0.001EU/ µg,determined by LAL method.

Conjugation

Unconjugated

Expression system

CHO Cell

Format

Purified monoclonal antibody supplied in PBS, pH6.0, without preservative.This antibody is purified through a protein A column.

Storage

-80°C for 2 years under sterile conditions □ -20°C for 1 year under sterile conditions □ Avoid repeated freeze-thaw cycles.

Anti-CDH1 / E-cadherin / CD324 Reference Antibody (Stem Centrx patent anti-Cadherin-1) - Protein Information

Name CDH1

Synonyms CDHE, UVO

Function

Cadherins are calcium-dependent cell adhesion proteins (PubMed:11976333). They

preferentially interact with themselves in a homophilic manner in connecting cells; cadherins may thus contribute to the sorting of heterogeneous cell types. CDH1 is involved in mechanisms regulating cell-cell adhesions, mobility and proliferation of epithelial cells (PubMed:11976333). Has a potent invasive suppressor role. It is a ligand for integrin alpha-E/beta-7.

Cellular Location

Cell junction, adherens junction. Cell membrane; Single-pass type I membrane protein. Endosome. Golgi apparatus, trans-Golgi network. Note=Colocalizes with DLGAP5 at sites of cell-cell contact in intestinal epithelial cells. Anchored to actin microfilaments through association with alpha-, beta- and gamma-catenin. Sequential proteolysis induced by apoptosis or calcium influx, results in translocation from sites of cell-cell contact to the cytoplasm Colocalizes with RAB11A endosomes during its transport from the Golgi apparatus to the plasma membrane

Tissue Location

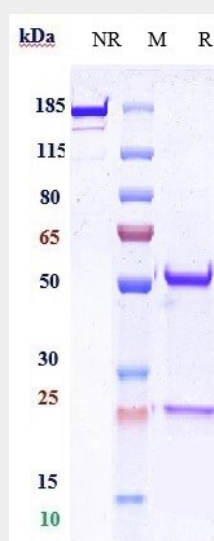
Non-neural epithelial tissues.

Anti-CDH1 / E-cadherin / CD324 Reference Antibody (Stem Centrx patent anti-Cadherin-1) - Protocols

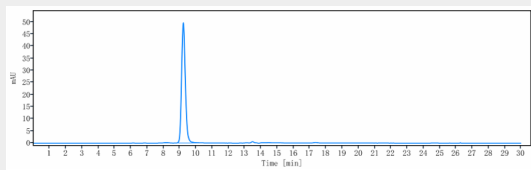
Provided below are standard protocols that you may find useful for product applications.

- [Western Blot](#)
- [Blocking Peptides](#)
- [Dot Blot](#)
- [Immunohistochemistry](#)
- [Immunofluorescence](#)
- [Immunoprecipitation](#)
- [Flow Cytometry](#)
- [Cell Culture](#)

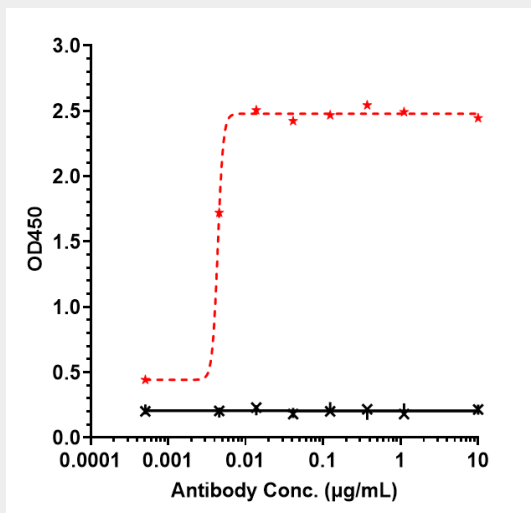
Anti-CDH1 / E-cadherin / CD324 Reference Antibody (Stem Centrx patent anti-Cadherin-1) - Images



Anti-CDH1 / E-cadherin / CD324 Reference Antibody (Stem Centrx patent anti-Cadherin-1) on SDS-PAGE under reducing (R) condition. The gel was stained with Coomassie Blue. The purity of the protein is greater than 95%



The purity of Anti-CDH1 / E-cadherin / CD324 Reference Antibody (Stem Centrx patent anti-Cadherin-1) is more than 95%, determined by SEC-HPLC.



Immobilized human CDH1 His at 2 µg/mL can bind Anti-CDH1 / E-cadherin / CD324 Reference Antibody (Stem Centrx patent anti-Cadherin-1) $EC_{50}=0.004381$ µg/mL.