

**Anti-CDH6 / K-Cadherin Reference Antibody (HKT288)
Recombinant Antibody
Catalog # APR10022**

Specification

Anti-CDH6 / K-Cadherin Reference Antibody (HKT288) - Product Information

Application	FC, Kinetics, Animal Model
Primary Accession	P55285
Reactivity	Human
Clonality	Monoclonal
Isotype	IgG1
Calculated MW	144.24 KDa

Anti-CDH6 / K-Cadherin Reference Antibody (HKT288) - Additional Information

Target/Specificity
CDH6 / K-Cadherin

Endotoxin
< 0.001EU/ µg,determined by LAL method.

Conjugation
Unconjugated

Expression system
CHO Cell

Format
Purified monoclonal antibody supplied in PBS, pH6.0, without preservative.This antibody is purified through a protein A column.

Anti-CDH6 / K-Cadherin Reference Antibody (HKT288) - Protein Information

Name CDH6

Function
Cadherins are calcium-dependent cell adhesion proteins. They preferentially interact with themselves in a homophilic manner in connecting cells; cadherins may thus contribute to the sorting of heterogeneous cell types.

Cellular Location
Cell membrane; Single-pass type I membrane protein

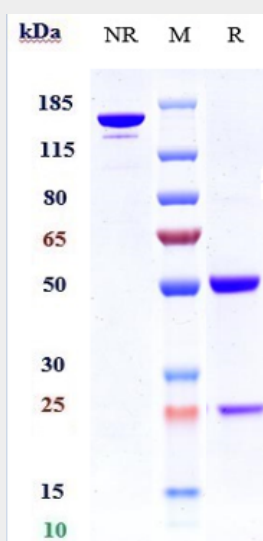
Tissue Location
Highly expressed in brain, cerebellum, and kidney. Lung, pancreas, and gastric mucosa show a weak expression. Also expressed in certain liver and kidney carcinomas

Anti-CDH6 / K-Cadherin Reference Antibody (HKT288) - Protocols

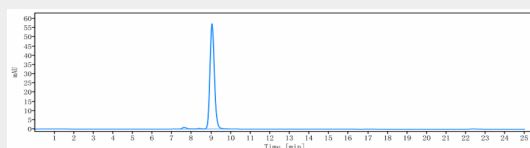
Provided below are standard protocols that you may find useful for product applications.

- [Western Blot](#)
- [Blocking Peptides](#)
- [Dot Blot](#)
- [Immunohistochemistry](#)
- [Immunofluorescence](#)
- [Immunoprecipitation](#)
- [Flow Cytometry](#)
- [Cell Culture](#)

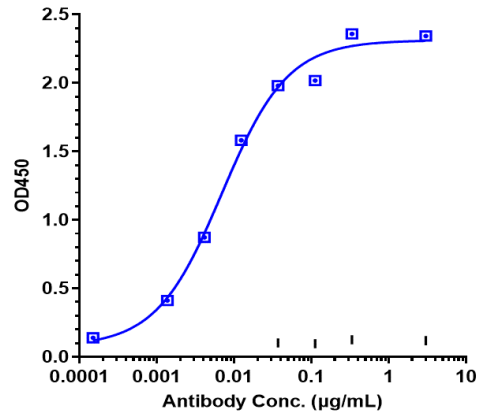
Anti-CDH6 / K-Cadherin Reference Antibody (HKT288) - Images



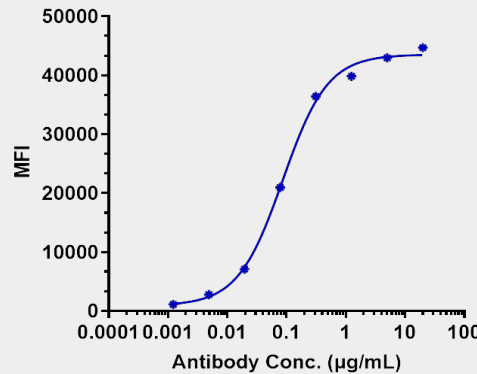
Anti-CDH6 / K-Cadherin Reference Antibody (HKT288) on SDS-PAGE under reducing (R) condition. The gel was stained with Coomassie Blue. The purity of the protein is greater than 95%



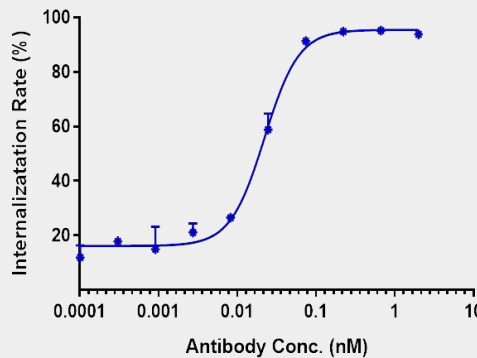
The purity of Anti-CDH6 / K-Cadherin Reference Antibody (HKT288) is more than 97.93%, determined by SEC-HPLC.



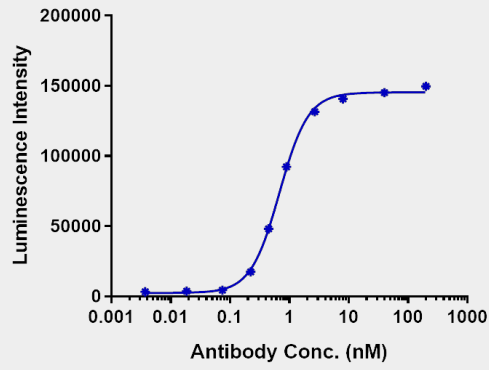
Immobilized Cyno CDH6 His at 2 µg/mL can bind Anti-CDH6 / K-Cadherin Reference Antibody (HKT288) EC₅₀=0.006944 µg/mL.



Human CDH6 HEK293(A6) cells were stained with Anti-CDH6 / K-Cadherin Reference Antibody (HKT288) and negative control protein respectively, washed and then followed by PE and analyzed with FACS, EC₇₁=0.08624 µg/mL



The endocytosis ratio HKT288 by Hu-CDH6-HEK293(A6) increased with the increase of antibody concentration, and the Internalization Rate (%) reached 93% at antibody concentration of 2 nM.



HKT288 induced OVCAR3 Luciferase activity was evaluated using huCD16a(V158)-NF-AT-Jurkat Reporter Cell. The EC50 was approximately 0.6792 nM.