

**Anti-TNFRSF5 / CD40 Reference Antibody (bleselumab)  
Recombinant Antibody  
Catalog # APR10028****Specification**

---

**Anti-TNFRSF5 / CD40 Reference Antibody (bleselumab) - Product Information**

Application	FC, Kinetics, Animal Model
Primary Accession	<a href="#">P25942</a>
Reactivity	Human
Clonality	Monoclonal
Isotype	IgG4PE
Calculated MW	150 KDa

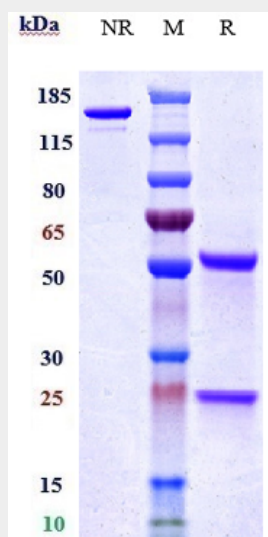
**Anti-TNFRSF5 / CD40 Reference Antibody (bleselumab) - Additional Information****Target/Specificity**  
TNFRSF5 / CD40**Endotoxin**  
< 0.001EU/ µg,determined by LAL method.**Conjugation**  
Unconjugated**Expression system**  
CHO Cell**Format**  
Purified monoclonal antibody supplied in PBS, pH6.0, without preservative.This antibody is purified through a protein A column.**Anti-TNFRSF5 / CD40 Reference Antibody (bleselumab) - Protein Information****Name** CD40**Synonyms** TNFRSF5**Function**  
Receptor for TNFSF5/CD40LG (PubMed:<a href="http://www.uniprot.org/citations/31331973" target="\_blank">31331973</a>). Transduces TRAF6- and MAP3K8-mediated signals that activate ERK in macrophages and B cells, leading to induction of immunoglobulin secretion (By similarity).**Cellular Location**  
[Isoform I]: Cell membrane; Single-pass type I membrane protein**Tissue Location**  
B-cells and in primary carcinomas.

## Anti-TNFRSF5 / CD40 Reference Antibody (bleselumab) - Protocols

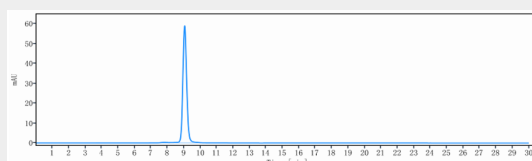
Provided below are standard protocols that you may find useful for product applications.

- [Western Blot](#)
- [Blocking Peptides](#)
- [Dot Blot](#)
- [Immunohistochemistry](#)
- [Immunofluorescence](#)
- [Immunoprecipitation](#)
- [Flow Cytometry](#)
- [Cell Culture](#)

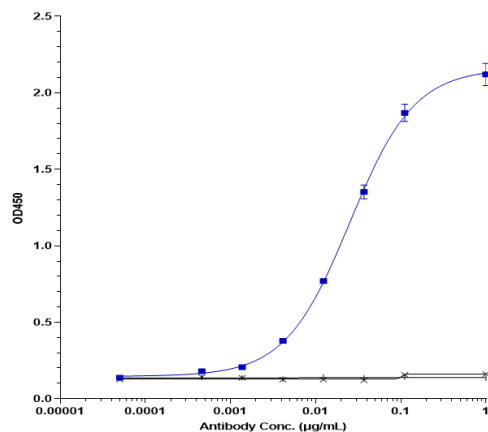
## Anti-TNFRSF5 / CD40 Reference Antibody (bleselumab) - Images



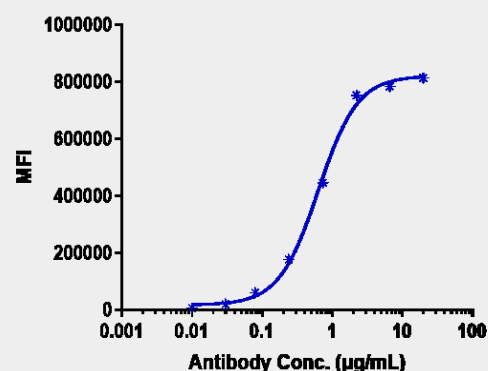
Anti-TNFRSF5 / CD40 Reference Antibody (bleselumab) on SDS-PAGE under reducing (R) condition. The gel was stained with Coomassie Blue. The purity of the protein is greater than 95%



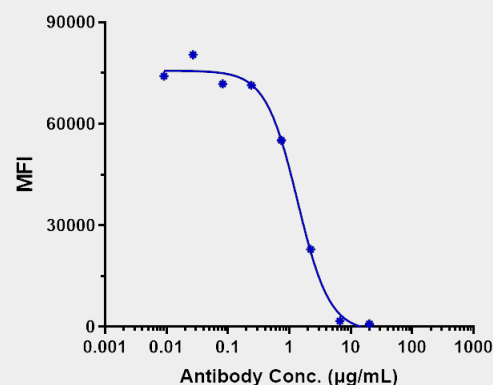
The purity of Anti-TNFRSF5 / CD40 Reference Antibody (bleselumab) is more than 99.21%, determined by SEC-HPLC.



Immobilized human TNFRSF5 / CD40 His at 2 µg/mL can bind Anti-TNFRSF5 / CD40 Reference Antibody (bleselumab)  $EC_{50}=0.0252$  µg/mL.



Human CD40 CHO cells were stained with Anti-TNFRSF5 / CD40 Reference Antibody (bleselumab) and negative control protein respectively, washed and then followed by PE and analyzed with FACS,  $EC_{77}=0.6311$  µg/mL



Anti-TNFRSF5 / CD40 Reference Antibody (bleselumab) FACS Blocking was evaluated using CCRF-CEM. The  $IC_{50}$  was approximately 1.359 µg/mL.