

**Anti-CD20 Reference Antibody (rituximab)
Recombinant Antibody
Catalog # APR10038****Specification**

Anti-CD20 Reference Antibody (rituximab) - Product Information

| | |
|-------------------|----------------------------|
| Application | FC, Kinetics, Animal Model |
| Primary Accession | P11836 |
| Reactivity | Human |
| Clonality | Monoclonal |
| Isotype | IgG1 |
| Calculated MW | 145.2 KDa |

Anti-CD20 Reference Antibody (rituximab) - Additional Information**Target/Specificity**
CD20**Endotoxin**
< 0.001EU/ µg,determined by LAL method.**Conjugation**
Unconjugated**Expression system**
CHO Cell**Format**
Purified monoclonal antibody supplied in PBS, pH6.0, without preservative.This antibody is purified through a protein A column.**Anti-CD20 Reference Antibody (rituximab) - Protein Information****Name** MS4A1**Synonyms** CD20**Function**
B-lymphocyte-specific membrane protein that plays a role in the regulation of cellular calcium influx necessary for the development, differentiation, and activation of B-lymphocytes (PubMed:12920111, PubMed:3925015, PubMed:7684739). Functions as a store-operated calcium (SOC) channel component promoting calcium influx after activation by the B-cell receptor/BCR (PubMed:12920111, PubMed:18474602, PubMed:7684739).

Cellular Location

Cell membrane; Multi-pass membrane protein. Cell membrane; Lipid-anchor. Note=Constitutively associated with membrane rafts.

Tissue Location

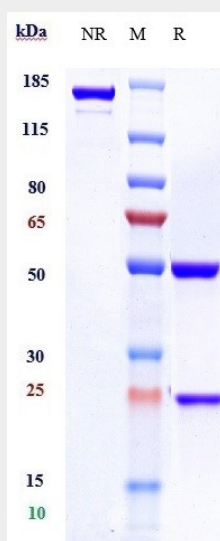
Expressed on B-cells.

Anti-CD20 Reference Antibody (rituximab) - Protocols

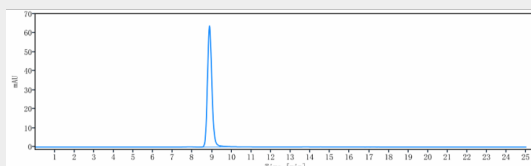
Provided below are standard protocols that you may find useful for product applications.

- [Western Blot](#)
- [Blocking Peptides](#)
- [Dot Blot](#)
- [Immunohistochemistry](#)
- [Immunofluorescence](#)
- [Immunoprecipitation](#)
- [Flow Cytometry](#)
- [Cell Culture](#)

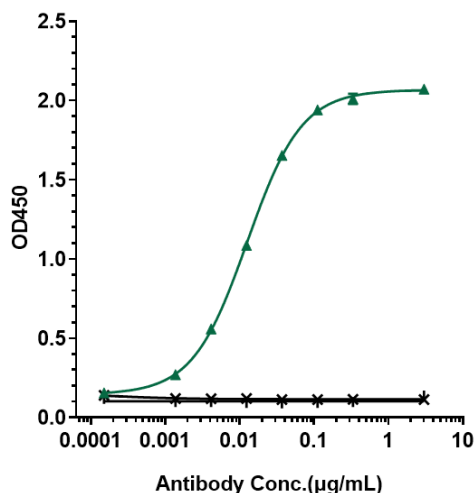
Anti-CD20 Reference Antibody (rituximab) - Images



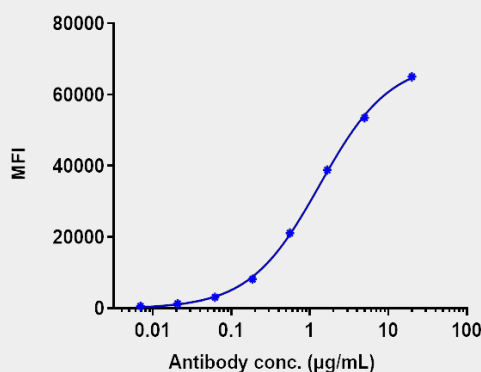
Anti-CD20 Reference Antibody (rituximab) on SDS-PAGE under reducing (R) condition. The gel was stained with Coomassie Blue. The purity of the protein is greater than 95%



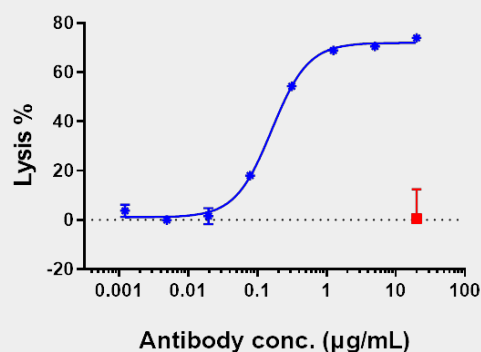
The purity of Anti-CD20 Reference Antibody (rituximab) is more than 98.97%, determined by SEC-HPLC.



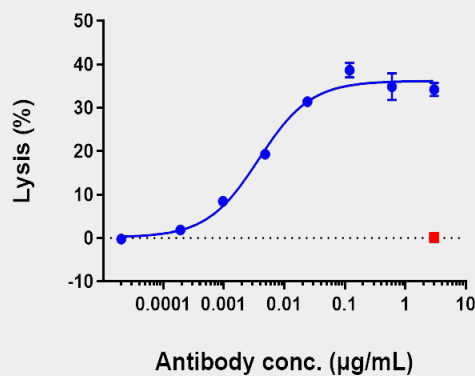
Immobilized human EGFR His at 2 µg/mL can bind Anti-CD20 Reference Antibody (rituximab) □ EC50=0.01573/0.01258 µg/mL



Raji cells were stained with Anti-CD20 Reference Antibody (rituximab) and negative control protein respectively, washed and then followed by PE and analyzed with FACS, EC87=1.334 µg/mL



Anti-CD20 Reference Antibody (rituximab)-induced CDC activity was evaluated using Raji Cell. The max Lysis rate was approximately 74%.



Anti-CD20 Reference Antibody (rituximab)-induced ADCC activity was evaluated using Raji Cell. The max Lysis rate was approximately 35%.