

**Anti-ERBB3/ HER3 Reference Antibody (patritumab deruxtecan)  
Recombinant Antibody  
Catalog # APR10048****Specification**

---

**Anti-ERBB3/ HER3 Reference Antibody (patritumab deruxtecan) - Product Information**

|                   |                            |
|-------------------|----------------------------|
| Application       | FC, Kinetics, Animal Model |
| Primary Accession | <a href="#">P21860</a>     |
| Reactivity        | Human, Mouse               |
| Clonality         | Monoclonal                 |
| Isotype           | IgG1                       |
| Calculated MW     | 146.86 KDa                 |

**Anti-ERBB3/ HER3 Reference Antibody (patritumab deruxtecan) - Additional Information****Target/Specificity**  
ERBB3 / HER3**Endotoxin**  
< 0.001EU/ µg,determined by LAL method.**Conjugation**  
Dxd**Expression system**  
CHO Cell**Format**  
Purified monoclonal antibody supplied in PBS, pH6.0, without preservative.This antibody is purified through a protein A column.**Anti-ERBB3/ HER3 Reference Antibody (patritumab deruxtecan) - Protein Information****Name** ERBB3**Synonyms** HER3**Function**  
Tyrosine-protein kinase that plays an essential role as cell surface receptor for neuregulins. Binds to neuregulin-1 (NRG1) and is activated by it; ligand-binding increases phosphorylation on tyrosine residues and promotes its association with the p85 subunit of phosphatidylinositol 3-kinase (PubMed:<a href="http://www.uniprot.org/citations/20682778" target="\_blank">20682778</a>). May also be activated by CSPG5 (PubMed:<a href="http://www.uniprot.org/citations/15358134" target="\_blank">15358134</a>). Involved in the regulation of myeloid cell differentiation (PubMed:<a href="http://www.uniprot.org/citations/27416908" target="\_blank">27416908</a>).**Cellular Location**  
[Isoform 1]: Cell membrane; Single-pass type I membrane protein

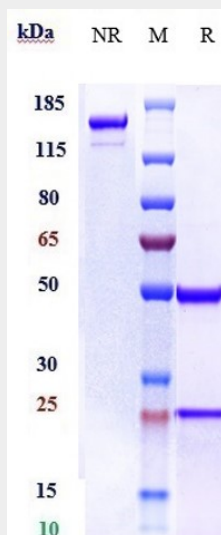
**Tissue Location**

Epithelial tissues and brain.

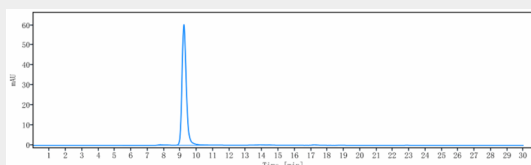
**Anti-ERBB3/ HER3 Reference Antibody (patritumab deruxtecan) - Protocols**

Provided below are standard protocols that you may find useful for product applications.

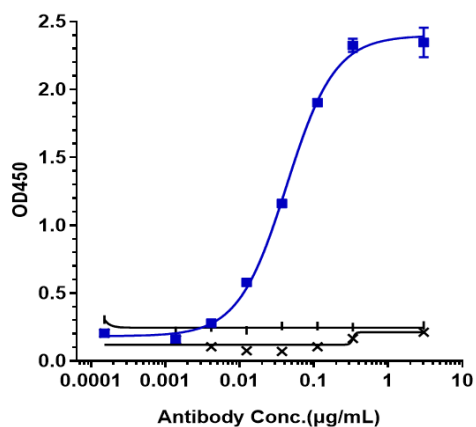
- [Western Blot](#)
- [Blocking Peptides](#)
- [Dot Blot](#)
- [Immunohistochemistry](#)
- [Immunofluorescence](#)
- [Immunoprecipitation](#)
- [Flow Cytometry](#)
- [Cell Culture](#)

**Anti-ERBB3/ HER3 Reference Antibody (patritumab deruxtecan) - Images**

Anti-ERBB3/ HER3 Reference Antibody (patritumab deruxtecan) on SDS-PAGE under reducing (R) condition. The gel was stained with Coomassie Blue. The purity of the protein is greater than 95%



The purity of Anti-ERBB3/ HER3 Reference Antibody (patritumab deruxtecan) is more than 99.19%, determined by SEC-HPLC.



Immobilized human HER3 His at 2 µg/mL can bind Anti-ERBB3/ HER3 Reference Antibody (patritumab deruxtecan)  $\square$ EC50=0.044 µg/mL