

**Anti-MUC1 Reference Antibody (gatipotuzumab)**  
**Recombinant Antibody**  
**Catalog # APR10056****Specification**

---

**Anti-MUC1 Reference Antibody (gatipotuzumab) - Product Information**

Application	FC, Kinetics, Animal Model
Primary Accession	<a href="#">P15941</a>
Reactivity	Human
Clonality	Monoclonal
Isotype	IgG1
Calculated MW	146.56 KDa

**Anti-MUC1 Reference Antibody (gatipotuzumab) - Additional Information****Target/Specificity**  
MUC1**Endotoxin**  
< 0.001EU/ µg,determined by LAL method.**Conjugation**  
Unconjugated**Expression system**  
CHO Cell**Format**  
Purified monoclonal antibody supplied in PBS, pH6.0, without preservative.This antibody is purified through a protein A column.**Anti-MUC1 Reference Antibody (gatipotuzumab) - Protein Information****Name** MUC1**Synonyms** PUM**Function**  
The alpha subunit has cell adhesive properties. Can act both as an adhesion and an anti-adhesion protein. May provide a protective layer on epithelial cells against bacterial and enzyme attack.**Cellular Location**  
Apical cell membrane; Single-pass type I membrane protein. Note=Exclusively located in the apical domain of the plasma membrane of highly polarized epithelial cells After endocytosis, internalized and recycled to the cell membrane Located to microvilli and to the tips of long filopodial protusions [Isoform Y]: Secreted. [Mucin-1 subunit beta]: Cell membrane. Cytoplasm. Nucleus. Note=On EGF and PDGFRB stimulation, transported to the nucleus through interaction with CTNNB1, a process which is stimulated by phosphorylation. On HRG stimulation, colocalizes

with JUP/gamma-catenin at the nucleus

#### **Tissue Location**

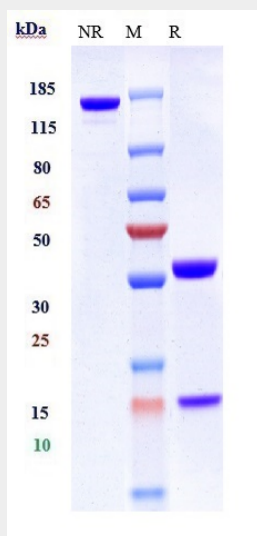
Expressed on the apical surface of epithelial cells, especially of airway passages, breast and uterus. Also expressed in activated and unactivated T-cells. Overexpressed in epithelial tumors, such as breast or ovarian cancer and also in non-epithelial tumor cells. Isoform Y is expressed in tumor cells only

#### **Anti-MUC1 Reference Antibody (gatipotuzumab) - Protocols**

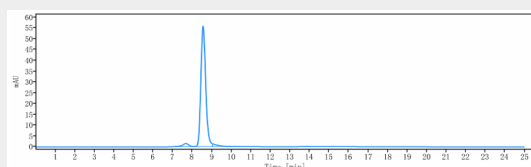
Provided below are standard protocols that you may find useful for product applications.

- [Western Blot](#)
- [Blocking Peptides](#)
- [Dot Blot](#)
- [Immunohistochemistry](#)
- [Immunofluorescence](#)
- [Immunoprecipitation](#)
- [Flow Cytometry](#)
- [Cell Culture](#)

#### **Anti-MUC1 Reference Antibody (gatipotuzumab) - Images**



Anti-MUC1 Reference Antibody (gatipotuzumab) on SDS-PAGE under reducing (R) condition. The gel was stained with Coomassie Blue. The purity of the protein is greater than 95%



The purity of Anti-MUC1 Reference Antibody (gatipotuzumab) is more than 95.15% ,determined by SEC-HPLC.