

Anti-SIRP α / CD172g Reference Antibody (KWAR23)
Recombinant Antibody
Catalog # APR10072**Specification**

Anti-SIRP α / CD172g Reference Antibody (KWAR23) - Product Information

Application	FC, Kinetics, Animal Model
Primary Accession	O9P1W8
Reactivity	Human, Mouse
Clonality	Monoclonal
Isotype	IgG4SP
Calculated MW	143.4 KDa

Anti-SIRP α / CD172g Reference Antibody (KWAR23) - Additional Information**Target/Specificity**
SIRP α / CD172g**Endotoxin**
< 0.001EU/ μ g,determined by LAL method.**Conjugation**
Unconjugated**Expression system**
CHO Cell**Format**
Purified monoclonal antibody supplied in PBS, pH6.0, without preservative.This antibody is purified through a protein A column.**Anti-SIRP α / CD172g Reference Antibody (KWAR23) - Protein Information****Name** SIRPG**Synonyms** SIRPB2**Function**
Probable immunoglobulin-like cell surface receptor. On binding with CD47, mediates cell-cell adhesion. Engagement on T-cells by CD47 on antigen-presenting cells results in enhanced antigen-specific T-cell proliferation and costimulates T-cell activation.**Cellular Location**
Membrane; Single- pass type I membrane protein**Tissue Location**
Detected in liver, and at very low levels in brain, heart, lung, pancreas, kidney, placenta and skeletal muscle. Expressed on CD4+ T-cells, CD8+ T-cells, CD56-bright natural killer (NK) cells,

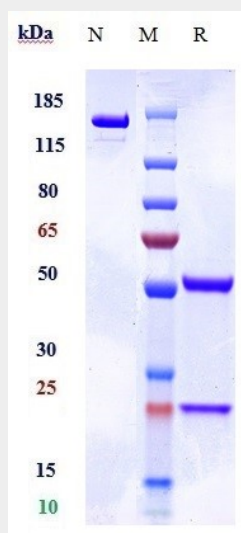
CD20+ cells, and all activated NK cells. Mainly present in the paracortical T-cell area of lymph nodes, with only sparse positive cells in the mantle and in the germinal center of B-cell follicles. In the thymus, primarily expressed in the medulla on mature T-lymphocytes that have undergone thymic selection.

Anti-SIRPg / CD172g Reference Antibody (KWAR23) - Protocols

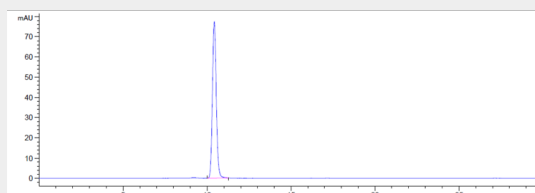
Provided below are standard protocols that you may find useful for product applications.

- [Western Blot](#)
- [Blocking Peptides](#)
- [Dot Blot](#)
- [Immunohistochemistry](#)
- [Immunofluorescence](#)
- [Immunoprecipitation](#)
- [Flow Cytometry](#)
- [Cell Culture](#)

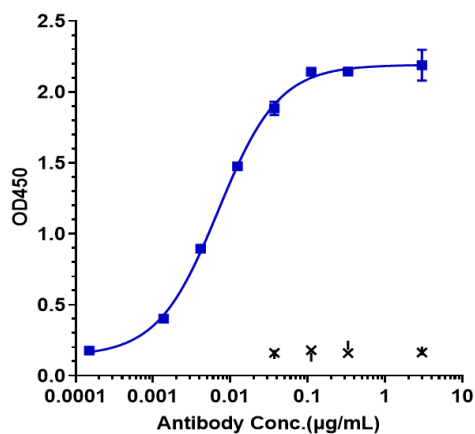
Anti-SIRPg / CD172g Reference Antibody (KWAR23) - Images



Anti-SIRPg / CD172g Reference Antibody (KWAR23) on SDS-PAGE under reducing (R) condition. The gel was stained with Coomassie Blue. The purity of the protein is greater than 95%



The purity of Anti-SIRPg / CD172g Reference Antibody (KWAR23) is more than 100% ,determined by SEC-HPLC.



Immobilized human ALCAM His at 2 µg/mL can bind Anti-SIRP α / CD172g Reference Antibody (KWAR23) \square EC₅₀=0.00698 µg/mL