

**Anti-B7-H4 / VTCN1 Reference Antibody (alsevalimab)  
Recombinant Antibody  
Catalog # APR10078****Specification**

---

**Anti-B7-H4 / VTCN1 Reference Antibody (alsevalimab) - Product Information**

Application	FC, Kinetics, Animal Model
Primary Accession	<a href="#">Q7Z7D3</a>
Reactivity	Human, Mouse
Clonality	Monoclonal
Isotype	IgG1
Calculated MW	145 KDa

**Anti-B7-H4 / VTCN1 Reference Antibody (alsevalimab) - Additional Information****Target/Specificity**  
B7-H4 / VTCN1**Endotoxin**  
< 0.001EU/ µg,determined by LAL method.**Conjugation**  
Unconjugated**Expression system**  
CHO Cell**Format**  
Purified monoclonal antibody supplied in PBS, pH6.0, without preservative.This antibody is purified through a protein A column.**Anti-B7-H4 / VTCN1 Reference Antibody (alsevalimab) - Protein Information****Name** VTCN1 {ECO:0000312|EMBL:EAW56672.1}**Function**  
Negatively regulates T-cell-mediated immune response by inhibiting T-cell activation, proliferation, cytokine production and development of cytotoxicity. When expressed on the cell surface of tumor macrophages, plays an important role, together with regulatory T- cells (Treg), in the suppression of tumor-associated antigen-specific T-cell immunity. Involved in promoting epithelial cell transformation.**Cellular Location**  
Cell membrane; Single-pass type I membrane protein. Note=Expressed at the cell surface. A soluble form has also been detected. {ECO:0000255, ECO:0000269|PubMed:12818165, ECO:0000269|PubMed:15878339, ECO:0000269|PubMed:16782226}**Tissue Location**



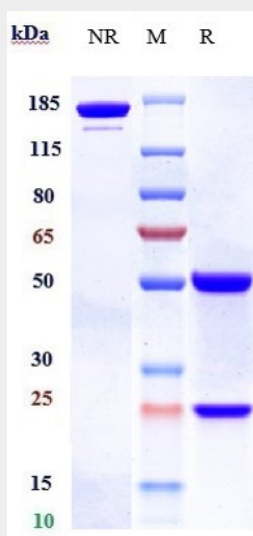
Overexpressed in breast, ovarian, endometrial, renal cell (RCC) and non-small-cell lung cancers (NSCLC). Expressed on activated T- and B-cells, monocytes and dendritic cells, but not expressed in most normal tissues (at protein level). Widely expressed, including in kidney, liver, lung, ovary, placenta, spleen and testis

### Anti-B7-H4 / VTCN1 Reference Antibody (alsevalimab) - Protocols

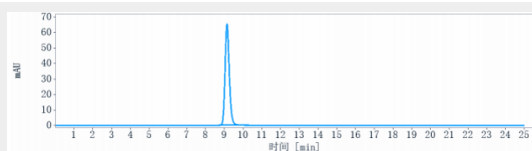
Provided below are standard protocols that you may find useful for product applications.

- [Western Blot](#)
- [Blocking Peptides](#)
- [Dot Blot](#)
- [Immunohistochemistry](#)
- [Immunofluorescence](#)
- [Immunoprecipitation](#)
- [Flow Cytometry](#)
- [Cell Culture](#)

### Anti-B7-H4 / VTCN1 Reference Antibody (alsevalimab) - Images

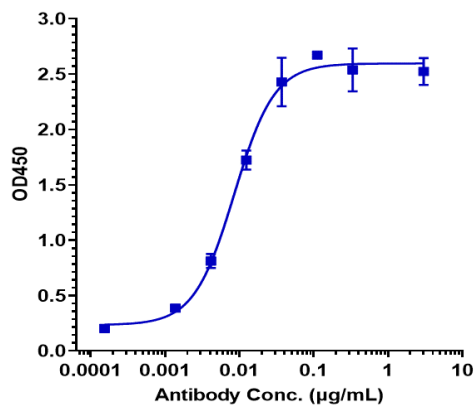


Anti-B7-H4 / VTCN1 Reference Antibody (alsevalimab) on SDS-PAGE under reducing (R) condition. The gel was stained with Coomassie Blue. The purity of the protein is greater than 95%



The purity of Anti-B7-H4 / VTCN1 Reference Antibody (alsevalimab) is more than 100%, determined by SEC-HPLC.





Immobilized human B7 H4 His at 2 µg/mL can bind Anti-B7-H4 / VTCN1 Reference Antibody (alsevalimab)  $\square$  EC50=0.008484 µg/mL