

**Anti-Complement C5 Reference Antibody (ravulizumab)  
Recombinant Antibody  
Catalog # APR10082****Specification**

---

**Anti-Complement C5 Reference Antibody (ravulizumab) - Product Information**

Application	FC, Kinetics, Animal Model
Primary Accession	<a href="#">P01031</a>
Reactivity	Human, Mouse
Clonality	Monoclonal
Isotype	IgG2SA
Calculated MW	145.8 KDa

**Anti-Complement C5 Reference Antibody (ravulizumab) - Additional Information****Target/Specificity**  
Complement C5**Endotoxin**  
< 0.001EU/ µg,determined by LAL method.**Conjugation**  
Unconjugated**Expression system**  
CHO Cell**Format**  
Purified monoclonal antibody supplied in PBS, pH6.0, without preservative.This antibody is purified through a protein A column.**Anti-Complement C5 Reference Antibody (ravulizumab) - Protein Information****Name** C5 {ECO:0000303|PubMed:1984448, ECO:0000312|HGNC:HGNC:1331}**Function**  
Precursor of the C5a anaphylatoxin and complement C5b components of the complement pathways, which consist in a cascade of proteins that leads to phagocytosis and breakdown of pathogens and signaling that strengthens the adaptive immune system (PubMed:<a href="http://www.uniprot.org/citations/12878586" target="\_blank">12878586</a>, PubMed:<a href="http://www.uniprot.org/citations/18204047" target="\_blank">18204047</a>, PubMed:<a href="http://www.uniprot.org/citations/30643019" target="\_blank">30643019</a>, PubMed:<a href="http://www.uniprot.org/citations/6554279" target="\_blank">6554279</a>). Activated downstream of classical, alternative, lectin and GZMK complement pathways (PubMed:<a href="http://www.uniprot.org/citations/12878586" target="\_blank">12878586</a>, PubMed:<a href="http://www.uniprot.org/citations/18204047" target="\_blank">18204047</a>, PubMed:<a href="http://www.uniprot.org/citations/30643019" target="\_blank">30643019</a>, PubMed:<a href="http://www.uniprot.org/citations/6554279" target="\_blank">6554279</a>).

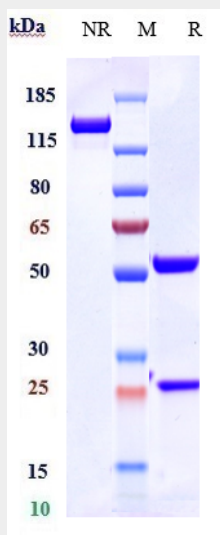
**Cellular Location**

Secreted. [C5a anaphylatoxin]: Secreted

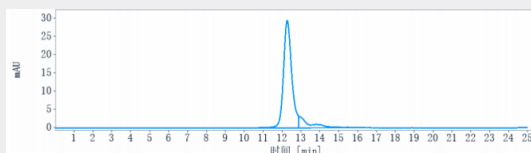
**Anti-Complement C5 Reference Antibody (ravulizumab) - Protocols**

Provided below are standard protocols that you may find useful for product applications.

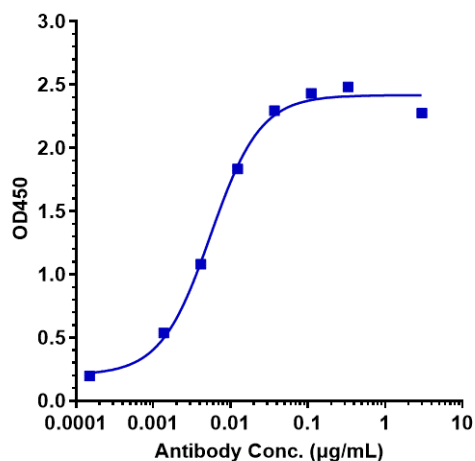
- [Western Blot](#)
- [Blocking Peptides](#)
- [Dot Blot](#)
- [Immunohistochemistry](#)
- [Immunofluorescence](#)
- [Immunoprecipitation](#)
- [Flow Cytometry](#)
- [Cell Culture](#)

**Anti-Complement C5 Reference Antibody (ravulizumab) - Images**

Anti-Complement C5 Reference Antibody (ravulizumab) on SDS-PAGE under reducing (R) condition. The gel was stained with Coomassie Blue. The purity of the protein is greater than 95%



The purity of Anti-Complement C5 Reference Antibody (ravulizumab) is more than 98.96%, determined by SEC-HPLC.



Immobilized human C5 His at 2 µg/mL can bind Anti-Complement C5 Reference Antibody (ravulizumab)  $EC_{50}=0.00552$  µg/mL