

**Anti-CD19 Reference Antibody (Loncastuximab tesirine)
Recombinant Antibody
Catalog # APR10084****Specification**

Anti-CD19 Reference Antibody (Loncastuximab tesirine) - Product Information

Application	FC, Kinetics, Animal Model
Primary Accession	P15391
Reactivity	Human
Clonality	Monoclonal
Isotype	IgG1
Calculated MW	144.46 KDa

Anti-CD19 Reference Antibody (Loncastuximab tesirine) - Additional Information**Target/Specificity**
CD19**Endotoxin**
< 0.001EU/ µg,determined by LAL method.**Conjugation**
PBD**Expression system**
CHO Cell**Format**
Purified monoclonal antibody supplied in 0.1M Glycine,0.2M NaCl,(tris),pH6.0, without preservative.
This antibody is purified through a protein A column.**Anti-CD19 Reference Antibody (Loncastuximab tesirine) - Protein Information****Name** CD19**Function**
Functions as a coreceptor for the B-cell antigen receptor complex (BCR) on B-lymphocytes (PubMed:29523808). Decreases the threshold for activation of downstream signaling pathways and for triggering B-cell responses to antigens (PubMed:1373518, PubMed:16672701, PubMed:2463100). Activates signaling pathways that lead to the activation of phosphatidylinositol 3-kinase and the mobilization of intracellular Ca(2+) stores (PubMed:12387743, PubMed:16672701, PubMed:9317126, PubMed:9382888). Is not required

for early steps during B cell differentiation in the blood marrow (PubMed:9317126). Required for normal differentiation of B-1 cells (By similarity). Required for normal B cell differentiation and proliferation in response to antigen challenges (PubMed:1373518, PubMed:2463100). Required for normal levels of serum immunoglobulins, and for production of high-affinity antibodies in response to antigen challenge (PubMed:12387743, PubMed:16672701, PubMed:9317126).

Cellular Location

Cell membrane; Single-pass type I membrane protein. Membrane raft
{ECO:0000250|UniProtKB:P25918}; Single-pass type I membrane protein
{ECO:0000250|UniProtKB:P25918}

Tissue Location

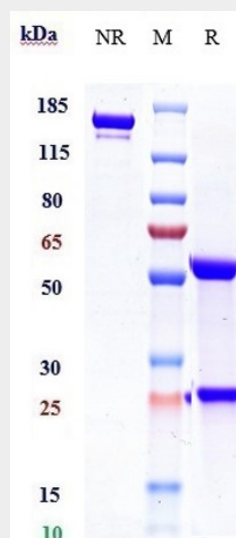
Detected on marginal zone and germinal center B cells in lymph nodes (PubMed:2463100).
Detected on blood B cells (at protein level) (PubMed:16672701, PubMed:2463100)

Anti-CD19 Reference Antibody (Loncastuximab tesirine) - Protocols

Provided below are standard protocols that you may find useful for product applications.

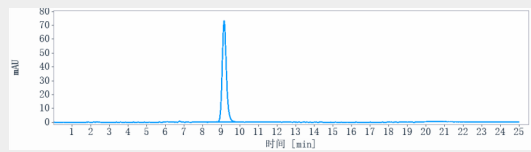
- [Western Blot](#)
- [Blocking Peptides](#)
- [Dot Blot](#)
- [Immunohistochemistry](#)
- [Immunofluorescence](#)
- [Immunoprecipitation](#)
- [Flow Cytometry](#)
- [Cell Culture](#)

Anti-CD19 Reference Antibody (Loncastuximab tesirine) - Images



Anti-CD19 Reference Antibody (Loncastuximab tesirine) on SDS-PAGE under reducing (R)

condition. The gel was stained with Coomassie Blue. The purity of the protein is greater than 95%



The purity of Anti-CD19 Reference Antibody (Loncastuximab tesirine) is more than 100% ,determined by SEC-HPLC.