

**Anti-TSPAN26 / CD37 Reference Antibody (naratuximab)
Recombinant Antibody
Catalog # APR10094****Specification**

Anti-TSPAN26 / CD37 Reference Antibody (naratuximab) - Product Information

Application	FC, Kinetics, Animal Model
Primary Accession	P11049
Reactivity	Human
Clonality	Monoclonal
Isotype	IgG1
Calculated MW	145 KDa

Anti-TSPAN26 / CD37 Reference Antibody (naratuximab) - Additional Information**Target/Specificity**
TSPAN26 / CD37**Endotoxin**
< 0.001EU/ µg,determined by LAL method.**Conjugation**
Unconjugated**Expression system**
CHO Cell**Format**
Purified monoclonal antibody supplied in PBS, pH6.0, without preservative.This antibody is purified through a protein A column.**Anti-TSPAN26 / CD37 Reference Antibody (naratuximab) - Protein Information****Name** CD37**Synonyms** TSPAN26**Function**
Structural component of specialized membrane microdomains known as tetraspanin-enriched microdomains (TERMs), which act as platforms for receptor clustering and signaling. Participates thereby in diverse biological functions such as cell signal transduction, adhesion, migration and protein trafficking (PubMed:22624718). Upon ligand binding, two signaling pathways are activated, one acting through phosphorylation by LYN leading to cell death or a survival pathway with activation of GSK3B (PubMed:22624718). Plays an essential role essential for clustering of integrin ITGA4/ITGB1 and promotes its mobility in the plasma membrane of B-cells. In turn, participates in ITGA4/ITGB1 integrin-mediated antiapoptotic signaling through AKT (By similarity). Also plays a

role in the migration of dendritic cells and neutrophils to draining lymph nodes, as well as in their integrin-mediated adhesion (By similarity). Negatively regulates IL-6 responses through direct interaction with SOCS3 thereby preventing constitutive IL-6 signaling (PubMed:26784544). Alternatively, inhibition of IL-6 signaling can also occur via interaction and stabilization of DECTIN1/CLEC7A at the cell membrane to inhibit its ability to promote the production of IL-6 (PubMed:17182550).

Cellular Location

Cell membrane; Multi-pass membrane protein

Tissue Location

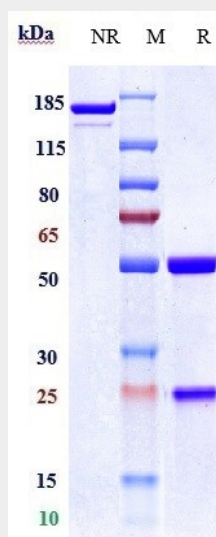
B-lymphocytes (PubMed:26784544). Antigen presenting cells (PubMed:17182550).

Anti-TSPAN26 / CD37 Reference Antibody (naratuximab) - Protocols

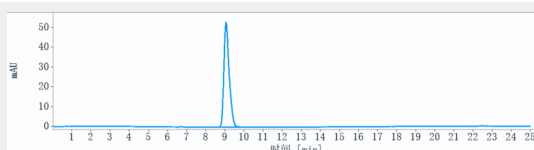
Provided below are standard protocols that you may find useful for product applications.

- [Western Blot](#)
- [Blocking Peptides](#)
- [Dot Blot](#)
- [Immunohistochemistry](#)
- [Immunofluorescence](#)
- [Immunoprecipitation](#)
- [Flow Cytometry](#)
- [Cell Culture](#)

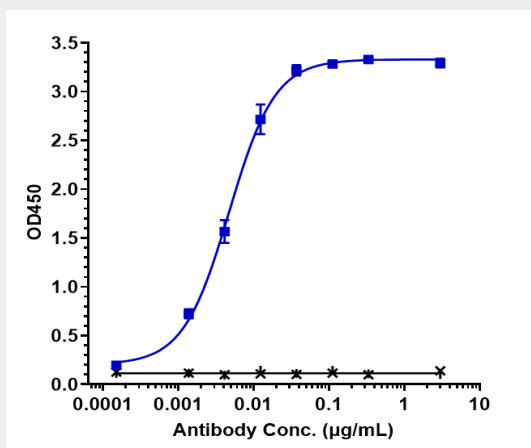
Anti-TSPAN26 / CD37 Reference Antibody (naratuximab) - Images



Anti-TSPAN26 / CD37 Reference Antibody (naratuximab) on SDS-PAGE under reducing (R) condition. The gel was stained with Coomassie Blue. The purity of the protein is greater than 95%



The purity of Anti-TSPAN26 / CD37 Reference Antibody (naratuximab) is more than 100% ,determined by SEC-HPLC.



Immobilized human CD37 VLP at 16 µg/mL can bind Anti-TSPAN26 / CD37 Reference Antibody (naratuximab) $EC_{50} = 0.0047$ µg/mL