

Anti-CDCP1 / CD318 Reference Antibody (38 E11)
Recombinant Antibody
Catalog # APR10099**Specification**

Anti-CDCP1 / CD318 Reference Antibody (38 E11) - Product Information

Application	FC, E, FTA
Primary Accession	Q9H5V8
Reactivity	Human
Clonality	Monoclonal
Isotype	IgG1
Calculated MW	150 KDa

Anti-CDCP1 / CD318 Reference Antibody (38 E11) - Additional Information**Target/Specificity**
CDCP1 / CD318**Endotoxin**
< 0.001EU/ µg,determined by LAL method.**Conjugation**
Unconjugated**Expression system**
CHO Cell**Format**
Purified monoclonal antibody supplied in PBS, pH6.0, without preservative.This antibody is purified through a protein A column.**Storage**
-80°C for 2 years under sterile conditions □ -20°C for 1 year under sterile conditions □ Avoid repeated freeze-thaw cycles.**Anti-CDCP1 / CD318 Reference Antibody (38 E11) - Protein Information****Name** CDCP1**Synonyms** TRASK**Function**
May be involved in cell adhesion and cell matrix association. May play a role in the regulation of anchorage versus migration or proliferation versus differentiation via its phosphorylation. May be a novel marker for leukemia diagnosis and for immature hematopoietic stem cell subsets. Belongs to the tetraspanin web involved in tumor progression and metastasis.**Cellular Location**

[Isoform 1]: Cell membrane; Single- pass membrane protein. Note=Shedding may also lead to a soluble peptide

Tissue Location

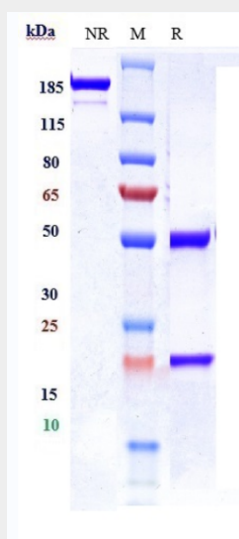
Highly expressed in mitotic cells with low expression during interphase. Detected at highest levels in skeletal muscle and colon with lower levels in kidney, small intestine, placenta and lung. Up-regulated in a number of human tumor cell lines, as well as in colorectal cancer, breast carcinoma and lung cancer. Also expressed in cells with phenotypes reminiscent of mesenchymal stem cells and neural stem cells.

Anti-CDCP1 / CD318 Reference Antibody (38 E11) - Protocols

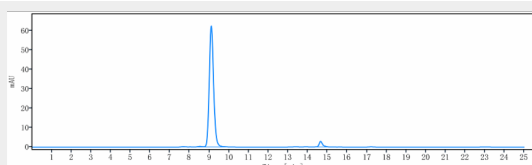
Provided below are standard protocols that you may find useful for product applications.

- [Western Blot](#)
- [Blocking Peptides](#)
- [Dot Blot](#)
- [Immunohistochemistry](#)
- [Immunofluorescence](#)
- [Immunoprecipitation](#)
- [Flow Cytometry](#)
- [Cell Culture](#)

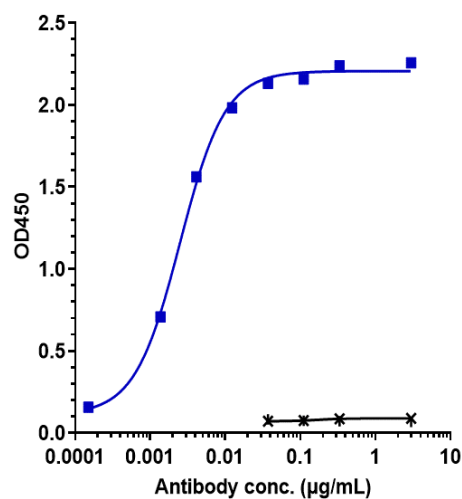
Anti-CDCP1 / CD318 Reference Antibody (38 E11) - Images



Anti-CDCP1 / CD318 Reference Antibody (38 E11) on SDS-PAGE under reducing (R) condition. The gel was stained with Coomassie Blue. The purity of the protein is greater than 95%



The purity of Anti-CDCP1 / CD318 Reference Antibody (38 E11) is more than 95.48% ,determined by SEC-HPLC.



Immobilized human CDCP1 His at 2 µg/mL can bind Anti-CDCP1 / CD318 Reference Antibody (38 E11) □EC50=0.002496 µg/mL