

**Anti-GPRC5D Reference Antibody (talquetamab)
Recombinant Antibody
Catalog # APR10140****Specification**

Anti-GPRC5D Reference Antibody (talquetamab) - Product Information

Application	FC, E, FTA
Primary Accession	O9NZD1
Reactivity	Cynomolgus, Human, Mouse
Clonality	Monoclonal
Isotype	IgG4
Calculated MW	144.58 KDa

Anti-GPRC5D Reference Antibody (talquetamab) - Additional Information**Target/Specificity**
GPRC5D**Endotoxin**

< 0.001EU/ µg,determined by LAL method.

Conjugation

Unconjugated

Expression system

CHO Cell

Format

Purified monoclonal antibody supplied in PBS, pH6.0, without preservative.This antibody is purified through a protein A column.

Storage

-80°C for 2 years under sterile conditions □ -20°C for 1 year under sterile conditions □ Avoid repeated freeze-thaw cycles.

Anti-GPRC5D Reference Antibody (talquetamab) - Protein Information**Name** GPRC5D**Cellular Location**

Cell membrane; Multi-pass membrane protein

Tissue Location

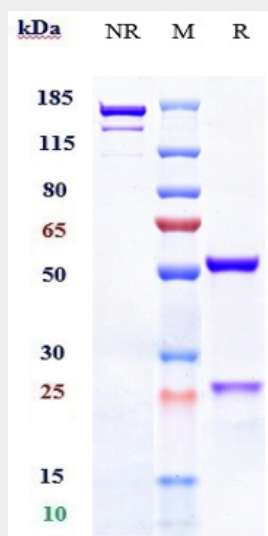
Widely expressed in the peripheral system. Expression pattern is high in pancreas, medium in kidney, small intestine, spleen and testis, low in lung, colon, leukocyte, prostate and thymus and not detectable in brain, heart, liver, placenta, skeletal muscle and ovary.

Anti-GPRC5D Reference Antibody (talquetamab) - Protocols

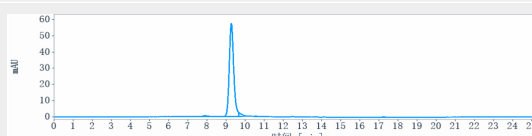
Provided below are standard protocols that you may find useful for product applications.

- [Western Blot](#)
- [Blocking Peptides](#)
- [Dot Blot](#)
- [Immunohistochemistry](#)
- [Immunofluorescence](#)
- [Immunoprecipitation](#)
- [Flow Cytometry](#)
- [Cell Culture](#)

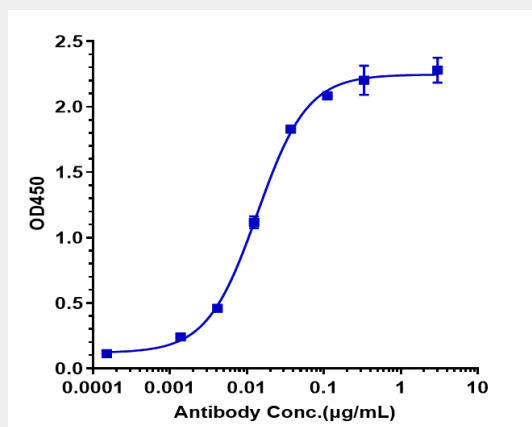
Anti-GPRC5D Reference Antibody (talquetamab) - Images



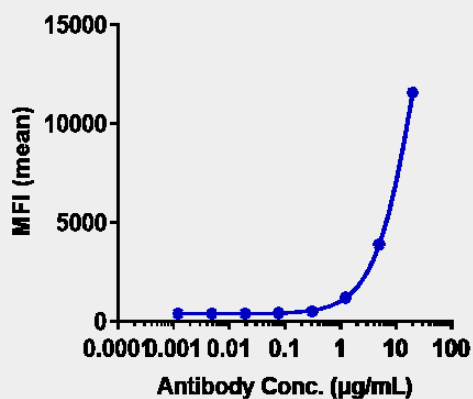
Anti-GPRC5D Reference Antibody (talquetamab) on SDS-PAGE under reducing (R) condition. The gel was stained with Coomassie Blue. The purity of the protein is greater than 95%



The purity of Anti-GPRC5D Reference Antibody (talquetamab) is more than 95.4% ,determined by SEC-HPLC.



Immobilized human CD3E/CD3 epsilon Protein, his Tag at 2 $\mu\text{g/mL}$ can bind Anti-GPRC5D Reference Antibody (talquetamab) \square $\text{EC}_{50}=0.01357 \mu\text{g/mL}$



Human GPRC5D HEK293 cells were stained with Anti-GPRC5D Reference Antibody (talquetamab) and negative control protein respectively, washed and then followed by PE and analyzed with FACS, $\text{EC}_{196}=25.06 \mu\text{g/mL}$