

**Anti-Complement C3 Reference Antibody (NGM621)
Recombinant Antibody
Catalog # APR10144****Specification**

Anti-Complement C3 Reference Antibody (NGM621) - Product Information

Application	FC, Kinetics, Animal Model
Primary Accession	P01024
Reactivity	Human
Clonality	Monoclonal
Isotype	IgG1
Calculated MW	149.04 KDa

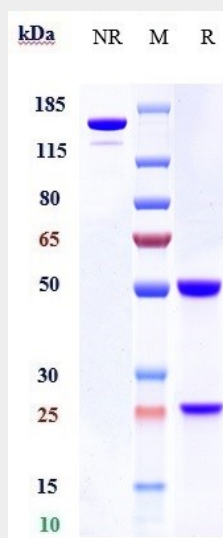
Anti-Complement C3 Reference Antibody (NGM621) - Additional Information**Target/Specificity**
Complement C3**Endotoxin**
< 0.001EU/ µg,determined by LAL method.**Conjugation**
Unconjugated**Expression system**
CHO Cell**Format**
Purified monoclonal antibody supplied in PBS, pH6.0, without preservative.This antibody is purified through a protein A column.**Anti-Complement C3 Reference Antibody (NGM621) - Protein Information****Name** C3 {ECO:0000303|PubMed:2579379, ECO:0000312|HGNC:HGNC:1318}**Function**
Precursor of non-enzymatic components of the classical, alternative, lectin and GZMK complement pathways, which consist in a cascade of proteins that leads to phagocytosis and breakdown of pathogens and signaling that strengthens the adaptive immune system.**Cellular Location**
Secreted. [C3a anaphylatoxin]: Secreted**Tissue Location**
Plasma..

Anti-Complement C3 Reference Antibody (NGM621) - Protocols

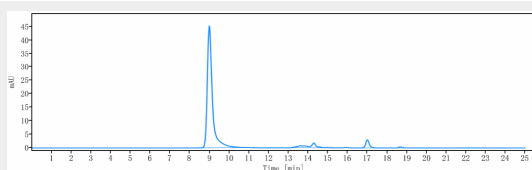
Provided below are standard protocols that you may find useful for product applications.

- [Western Blot](#)
- [Blocking Peptides](#)
- [Dot Blot](#)
- [Immunohistochemistry](#)
- [Immunofluorescence](#)
- [Immunoprecipitation](#)
- [Flow Cytometry](#)
- [Cell Culture](#)

Anti-Complement C3 Reference Antibody (NGM621) - Images



Anti-Complement C3 Reference Antibody (NGM621) on SDS-PAGE under reducing (R) condition. The gel was stained with Coomassie Blue. The purity of the protein is greater than 95%



The purity of Anti-Complement C3 Reference Antibody (NGM621) is more than 95% ,determined by SEC-HPLC.