

**Anti-IFN $\alpha$ 1 Reference Antibody (sifalimumab)  
Recombinant Antibody  
Catalog # APR10157**

**Specification**

---

**Anti-IFN $\alpha$ 1 Reference Antibody (sifalimumab) - Product Information**

Application	FC, E, FTA
Primary Accession	<a href="#">P01562</a>
Reactivity	Cynomolgus, Human
Clonality	Monoclonal
Isotype	IgG1
Calculated MW	144.24 KDa

**Anti-IFN $\alpha$ 1 Reference Antibody (sifalimumab) - Additional Information**

**Target/Specificity**  
IFN $\alpha$ 1

**Endotoxin**  
< 0.001EU/  $\mu$ g,determined by LAL method.

**Conjugation**  
Unconjugated

**Expression system**  
CHO Cell

**Format**  
Purified monoclonal antibody supplied in PBS, pH6.0, without preservative.This antibody is purified through a protein A column.

**Anti-IFN $\alpha$ 1 Reference Antibody (sifalimumab) - Protein Information**

**Name** IFN $\alpha$ 1

**Function**  
Produced by macrophages, IFN-alpha have antiviral activities. Interferon stimulates the production of two enzymes: a protein kinase and an oligoadenylate synthetase.

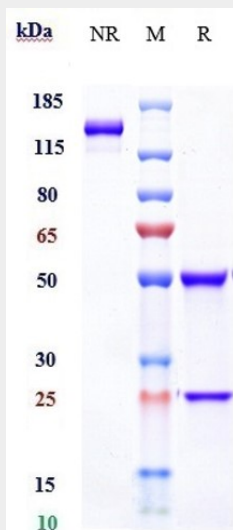
**Cellular Location**  
Secreted.

**Anti-IFN $\alpha$ 1 Reference Antibody (sifalimumab) - Protocols**

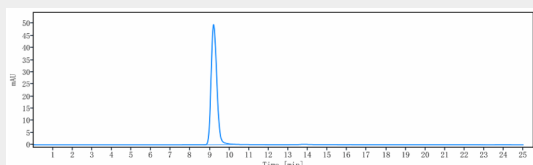
Provided below are standard protocols that you may find useful for product applications.

- [Western Blot](#)
- [Blocking Peptides](#)
- [Dot Blot](#)
- [Immunohistochemistry](#)
- [Immunofluorescence](#)
- [Immunoprecipitation](#)
- [Flow Cytometry](#)
- [Cell Culture](#)

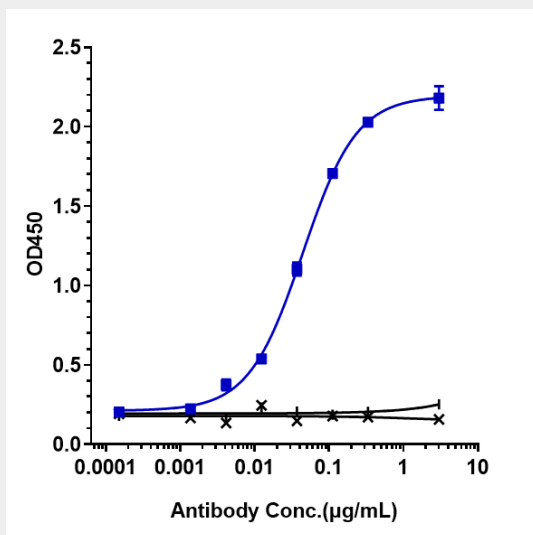
**Anti-IFN $\alpha$ 1 Reference Antibody (sifalimumab) - Images**



Anti-IFN $\alpha$ 1 Reference Antibody (sifalimumab) on SDS-PAGE under reducing (R) condition. The gel was stained with Coomassie Blue. The purity of the protein is greater than 95%



The purity of Anti-IFN $\alpha$ 1 Reference Antibody (sifalimumab) is more than 100% ,determined by SEC-HPLC.



Immobilized human IFN $\alpha$ 1, Fc tag at 2  $\mu$ g/mL can bind Anti-IFN $\alpha$ 1 Reference Antibody (sifalimumab)  $\square$  EC50=0.04414  $\mu$ g/mL