

**Anti-BTN1A1 Reference Antibody (CTX-2026)**  
**Recombinant Antibody**  
**Catalog # APR10173****Specification**

---

**Anti-BTN1A1 Reference Antibody (CTX-2026) - Product Information**

Application	FC, E, FTA
Primary Accession	<a href="#">Q13410</a>
Reactivity	Cynomolgus, Human
Clonality	Monoclonal
Isotype	IgG1
Calculated MW	145.54 KDa

**Anti-BTN1A1 Reference Antibody (CTX-2026) - Additional Information****Target/Specificity**  
BTN1A1**Endotoxin**  
< 0.001EU/ µg,determined by LAL method.**Conjugation**  
Unconjugated**Expression system**  
CHO Cell**Format**  
Purified monoclonal antibody supplied in PBS, pH6.0, without preservative.This antibody is purified through a protein A column.**Storage**  
-80°C for 2 years under sterile conditions □ -20°C for 1 year under sterile conditions □ Avoid repeated freeze-thaw cycles.**Anti-BTN1A1 Reference Antibody (CTX-2026) - Protein Information****Name** BTN1A1**Synonyms** BTN**Function**  
May function in the secretion of milk-fat droplets. May act as a specific membrane-associated receptor for the association of cytoplasmic droplets with the apical plasma membrane (By similarity). Inhibits the proliferation of CD4 and CD8 T-cells activated by anti-CD3 antibodies, T-cell metabolism and IL2 and IFNG secretion (By similarity).**Cellular Location**

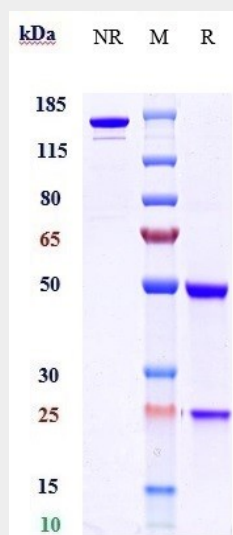
Membrane; Single-pass type I membrane protein. Secreted

### Anti-BTN1A1 Reference Antibody (CTX-2026) - Protocols

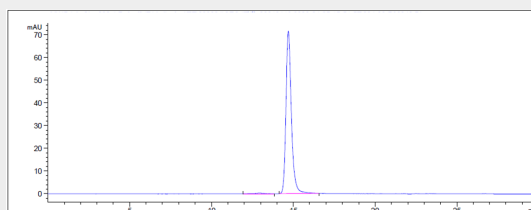
Provided below are standard protocols that you may find useful for product applications.

- [Western Blot](#)
- [Blocking Peptides](#)
- [Dot Blot](#)
- [Immunohistochemistry](#)
- [Immunofluorescence](#)
- [Immunoprecipitation](#)
- [Flow Cytometry](#)
- [Cell Culture](#)

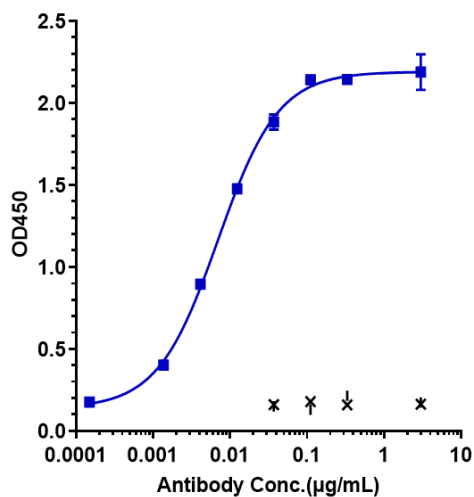
### Anti-BTN1A1 Reference Antibody (CTX-2026) - Images



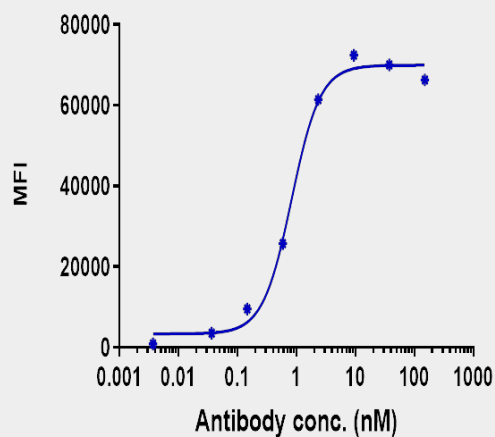
Anti-BTN1A1 Reference Antibody (CTX-2026) on SDS-PAGE under reducing (R) condition. The gel was stained with Coomassie Blue. The purity of the protein is greater than 95%



The purity of Anti-BTN1A1 Reference Antibody (CTX-2026) is more than 98.77% ,determined by SEC-HPLC.



Immobilized human PVRIG His at 2 µg/mL can bind Anti-BTN1A1 Reference Antibody (CTX-2026)  $EC_{50}=0.002394$  µg/mL



Human BTN3 HEK293 cells were stained with Anti-BTN1A1 Reference Antibody (CTX-2026) and negative control protein respectively, washed and then followed by PE and analyzed with FACS,  $EC_{230}=0.8254$  nM