

**Anti-TFPI Reference Antibody (concizumab)**  
**Recombinant Antibody**  
**Catalog # APR10176****Specification**

---

**Anti-TFPI Reference Antibody (concizumab) - Product Information**

Application	FC, Kinetics, Animal Model
Primary Accession	<a href="#">P10646</a>
Reactivity	Human, Rabbit
Clonality	Monoclonal
Isotype	IgG4SP
Calculated MW	145 KDa

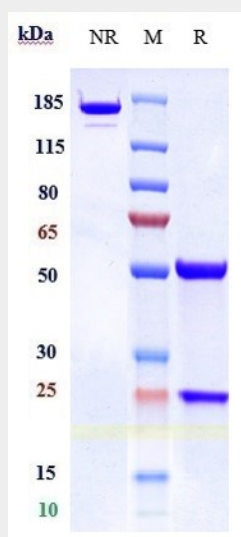
**Anti-TFPI Reference Antibody (concizumab) - Additional Information****Target/Specificity**  
TFPI**Endotoxin**  
< 0.001EU/ µg,determined by LAL method.**Conjugation**  
Unconjugated**Expression system**  
CHO Cell**Format**  
Purified monoclonal antibody supplied in 100mM Pro-Ac, 20mM Arg, pH5.0, without preservative.This antibody is purified through a protein A column.**Anti-TFPI Reference Antibody (concizumab) - Protein Information****Name** TFPI**Synonyms** LACI, TFPI1**Function**  
Inhibits factor X (X(a)) directly and, in a Xa-dependent way, inhibits VIIa/tissue factor activity, presumably by forming a quaternary Xa/LACI/VIIa/TF complex. It possesses an antithrombotic action and also the ability to associate with lipoproteins in plasma.**Cellular Location**  
[Isoform Alpha]: Secreted.**Tissue Location**  
Mostly in endothelial cells.

## Anti-TFPI Reference Antibody (concizumab) - Protocols

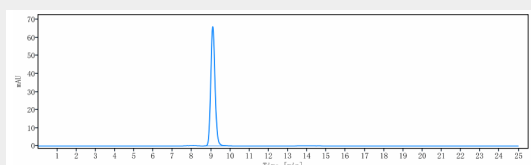
Provided below are standard protocols that you may find useful for product applications.

- [Western Blot](#)
- [Blocking Peptides](#)
- [Dot Blot](#)
- [Immunohistochemistry](#)
- [Immunofluorescence](#)
- [Immunoprecipitation](#)
- [Flow Cytometry](#)
- [Cell Culture](#)

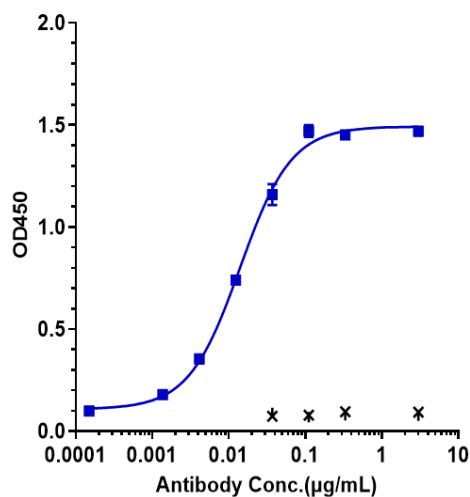
## Anti-TFPI Reference Antibody (concizumab) - Images



Anti-TFPI Reference Antibody (concizumab) on SDS-PAGE under reducing (R) condition. The gel was stained with Coomassie Blue. The purity of the protein is greater than 95%



The purity of Anti-TFPI Reference Antibody (concizumab) is more than 100% ,determined by SEC-HPLC.



Immobilized human TFPI, Fc tag at 2 µg/mL can bind Anti-TFPI Reference Antibody (concizumab) □ EC50=0.01401 µg/mL