

**Anti-CDH17 / Cadherin-17 Reference Antibody (10C12)
Recombinant Antibody
Catalog # APR10181****Specification**

Anti-CDH17 / Cadherin-17 Reference Antibody (10C12) - Product Information

| | |
|-------------------|----------------------------|
| Application | FC, Kinetics, Animal Model |
| Primary Accession | Q12864 |
| Reactivity | Human |
| Clonality | Monoclonal |
| Isotype | IgG1 |
| Calculated MW | 143.68 KDa |

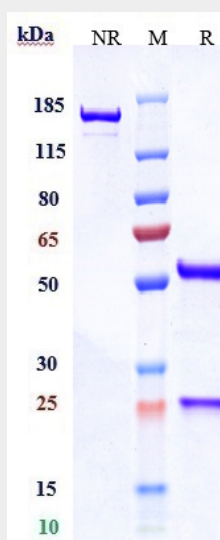
Anti-CDH17 / Cadherin-17 Reference Antibody (10C12) - Additional Information**Target/Specificity**
CDH17 / Cadherin-17**Endotoxin**
< 0.001EU/ µg,determined by LAL method.**Conjugation**
Unconjugated**Expression system**
CHO Cell**Format**
Purified monoclonal antibody supplied in PBS, pH6.0, without preservative.This antibody is purified through a protein A column.**Anti-CDH17 / Cadherin-17 Reference Antibody (10C12) - Protein Information****Name** CDH17**Function**
Cadherins are calcium-dependent cell adhesion proteins. They preferentially interact with themselves in a homophilic manner in connecting cells; cadherins may thus contribute to the sorting of heterogeneous cell types. LI-cadherin may have a role in the morphological organization of liver and intestine. Involved in intestinal peptide transport.**Cellular Location**
Cell membrane; Single-pass type I membrane protein**Tissue Location**
Expressed in the gastrointestinal tract and pancreatic duct. Not detected in kidney, lung, liver, brain, adrenal gland and skin.

Anti-CDH17 / Cadherin-17 Reference Antibody (10C12) - Protocols

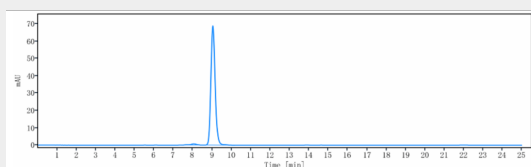
Provided below are standard protocols that you may find useful for product applications.

- [Western Blot](#)
- [Blocking Peptides](#)
- [Dot Blot](#)
- [Immunohistochemistry](#)
- [Immunofluorescence](#)
- [Immunoprecipitation](#)
- [Flow Cytometry](#)
- [Cell Culture](#)

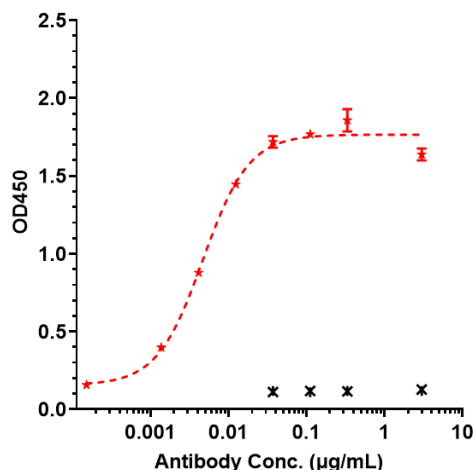
Anti-CDH17 / Cadherin-17 Reference Antibody (10C12) - Images



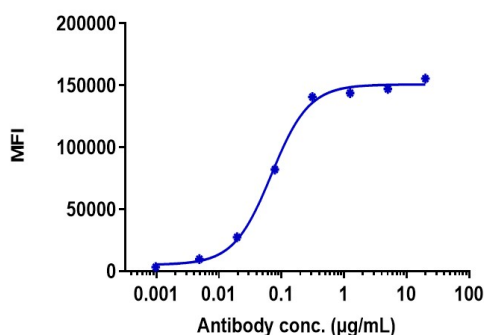
Anti-CDH17 / Cadherin-17 Reference Antibody (10C12) on SDS-PAGE under reducing (R) condition. The gel was stained with Coomassie Blue. The purity of the protein is greater than 95%



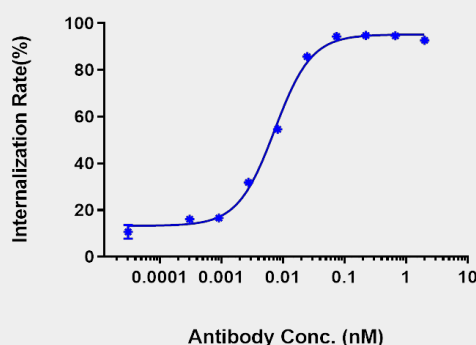
The purity of Anti-CDH17 / Cadherin-17 Reference Antibody (10C12) is more than 98.15%, determined by SEC-HPLC.



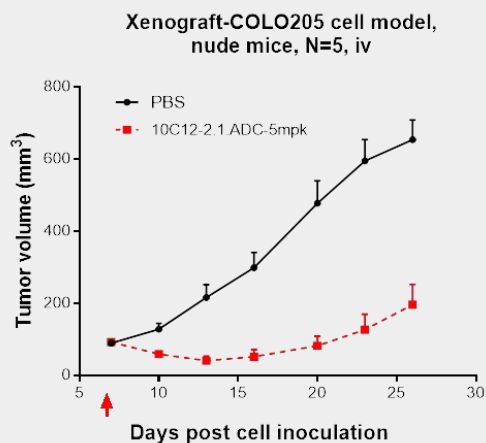
Immobilized human CDH17, His Tag at 2 µg/mL can bind Anti-CDH17 / Cadherin-17 Reference Antibody (10C12) EC₅₀=0.00468 µg/mL



Human CDH17 HEK293 cells were stained with Anti-CDH17 / Cadherin-17 Reference Antibody (10C12) and negative control protein respectively, washed and then followed by PE and analyzed with FACS, EC₅₀=0.06889 µg/mL



The endocytosis ratio 10C12 by Human CDH17 HEK293 increased with the increase of antibody concentration, and the Internalization Rate (%) reached 80% at antibody concentration of 2 nM.



10C12 inhibited the tumor growth of COLO205 on nude mice. The result showed significant anti-tumor effects, with an tumor inhibition rate (TGI) of 70.0% at 5 mpk at D26.