

**Anti-TGFb1 Reference Antibody (fresolimumab)
Recombinant Antibody
Catalog # APR10182****Specification**

Anti-TGFb1 Reference Antibody (fresolimumab) - Product Information

Application	FC, Kinetics, Animal Model
Primary Accession	P01137
Reactivity	Human, Mouse
Clonality	Monoclonal
Isotype	IgG4SP
Calculated MW	144.4 KDa

Anti-TGFb1 Reference Antibody (fresolimumab) - Additional Information**Target/Specificity**
TGFb1**Endotoxin**
< 0.001EU/ µg,determined by LAL method.**Conjugation**
Unconjugated**Expression system**
CHO Cell**Format**
Purified monoclonal antibody supplied in PBS, pH6.0, without preservative.This antibody is purified through a protein A column.**Anti-TGFb1 Reference Antibody (fresolimumab) - Protein Information****Name** TGFB1 ([HGNC:11766](#))**Synonyms** TGFB**Function**
Transforming growth factor beta-1 proprotein: Precursor of the Latency-associated peptide (LAP) and Transforming growth factor beta-1 (TGF-beta-1) chains, which constitute the regulatory and active subunit of TGF-beta-1, respectively.**Cellular Location**
[Latency-associated peptide]: Secreted, extracellular space, extracellular matrix**Tissue Location**
Highly expressed in bone (PubMed:11746498, PubMed:17827158). Abundantly expressed in articular cartilage and chondrocytes and is increased in osteoarthritis (OA) (PubMed:11746498,

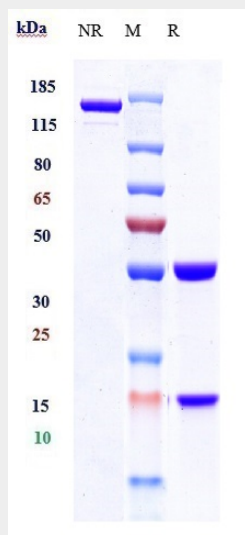
PubMed:17827158). Colocalizes with ASPN in chondrocytes within OA lesions of articular cartilage (PubMed:17827158)

Anti-TGFb1 Reference Antibody (fresolimumab) - Protocols

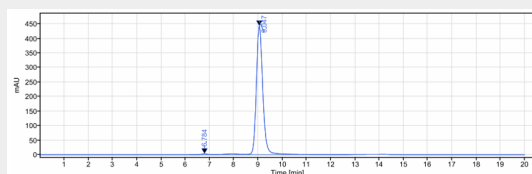
Provided below are standard protocols that you may find useful for product applications.

- [Western Blot](#)
- [Blocking Peptides](#)
- [Dot Blot](#)
- [Immunohistochemistry](#)
- [Immunofluorescence](#)
- [Immunoprecipitation](#)

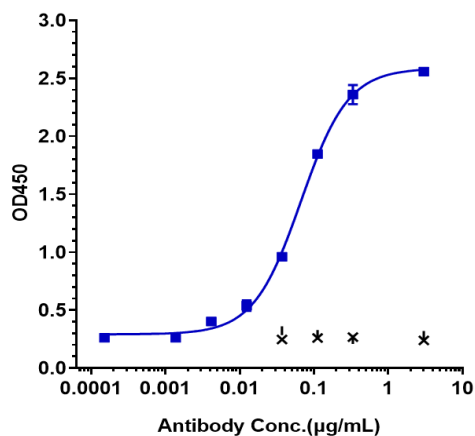
Anti-TGFb1 Reference Antibody (fresolimumab) - Images



Anti-TGFb1 Reference Antibody (fresolimumab) on SDS-PAGE under reducing (R) condition. The gel was stained with Coomassie Blue. The purity of the protein is greater than 95%



The purity of Anti-TGFb1 Reference Antibody (fresolimumab) is more than 97.38%, determined by SEC-HPLC.



Immobilized human Latent TGF beta 1/TGFB 1, His Tag at 2 µg/mL can bind Anti-TGFb1 Reference Antibody (fresolimumab) $EC_{50}=0.06648$ µg/mL