

**Anti-Mesothelin Reference Antibody (anetumab-MMAE)
Recombinant Antibody
Catalog # APR10198****Specification**

Anti-Mesothelin Reference Antibody (anetumab-MMAE) - Product Information

| | |
|-------------------|----------------------------|
| Application | FC, Kinetics, Animal Model |
| Primary Accession | Q13421 |
| Reactivity | Human, Mouse |
| Clonality | Monoclonal |
| Isotype | IgG1 |
| Calculated MW | 145 KDa |

Anti-Mesothelin Reference Antibody (anetumab-MMAE) - Additional Information**Target/Specificity**
Mesothelin**Endotoxin**
< 0.001EU/ µg,determined by LAL method.**Conjugation**
MMAE**Expression system**
CHO Cell**Format**
Purified monoclonal antibody supplied in PBS, pH6.0, without preservative.This antibody is purified through a protein A column.**Anti-Mesothelin Reference Antibody (anetumab-MMAE) - Protein Information****Name** MSLN**Synonyms** MPF**Function**
Membrane-anchored forms may play a role in cellular adhesion.**Cellular Location**
Cell membrane; Lipid-anchor, GPI-anchor. Golgi apparatus [Isoform 3]: Secreted.**Tissue Location**
Expressed in lung. Expressed at low levels in heart, placenta and kidney. Expressed in mesothelial cells. Highly expressed in mesotheliomas, ovarian cancers, and some squamous cell carcinomas (at protein level).

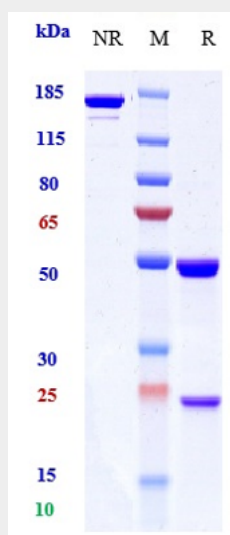
Anti-Mesothelin Reference Antibody (anetumab-MMAE) - Protocols

Provided below are standard protocols that you may find useful for product applications.

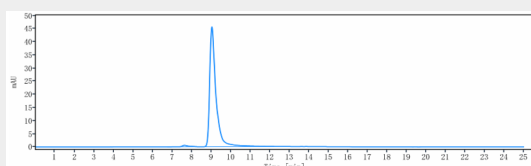
- [Western Blot](#)
- [Blocking Peptides](#)
- [Dot Blot](#)
- [Immunohistochemistry](#)
- [Immunofluorescence](#)
- [Immunoprecipitation](#)

- [Flow Cytometry](#)
- [Cell Culture](#)

Anti-Mesothelin Reference Antibody (anetumab-MMAE) - Images



Anti-Mesothelin Reference Antibody (anetumab-MMAE) on SDS-PAGE under reducing (R) condition. The gel was stained with Coomassie Blue. The purity of the protein is greater than 90%



The purity of Anti-Mesothelin Reference Antibody (anetumab-MMAE) is more than 95%, determined by SEC-HPLC.