

**Anti-NT5E / CD73 Reference Antibody (oleclumab)  
Recombinant Antibody  
Catalog # APR10200****Specification**

---

**Anti-NT5E / CD73 Reference Antibody (oleclumab) - Product Information**

Application	<b>FC, Kinetics, Animal Model</b>
Primary Accession	<a href="#">P21589</a>
Reactivity	<b>Human, Mouse</b>
Clonality	<b>Monoclonal</b>
Isotype	<b>IgG1</b>
Calculated MW	<b>143.82 KDa</b>

**Anti-NT5E / CD73 Reference Antibody (oleclumab) - Additional Information****Target/Specificity**

NT5E / CD73

**Endotoxin**

&lt; 0.001EU/ µg,determined by LAL method.

**Conjugation**

Unconjugated

**Expression system**

CHO Cell

**Format**

Purified monoclonal antibody supplied in PBS, pH6.0, without preservative.This antibody is purified through a protein A column.

**Anti-NT5E / CD73 Reference Antibody (oleclumab) - Protein Information****Name** NT5E**Synonyms** NT5, NTE**Function**

Catalyzes the hydrolysis of nucleotide monophosphates, releasing inorganic phosphate and the corresponding nucleoside, with AMP being the preferred substrate (PubMed:<a href="http://www.uniprot.org/citations/21933152" target="\_blank">21933152</a>, PubMed:<a href="http://www.uniprot.org/citations/22997138" target="\_blank">22997138</a>, PubMed:<a href="http://www.uniprot.org/citations/23142347" target="\_blank">23142347</a>, PubMed:<a href="http://www.uniprot.org/citations/24887587" target="\_blank">24887587</a>, PubMed:<a href="http://www.uniprot.org/citations/34403084" target="\_blank">34403084</a>). Shows a preference for ribonucleotide monophosphates over their equivalent deoxyribose forms (PubMed:<a href="http://www.uniprot.org/citations/34403084" target="\_blank">34403084</a>). Other substrates include IMP, UMP, GMP, CMP, dAMP, dCMP, dTMP, NAD and NMN (PubMed:<a

href="http://www.uniprot.org/citations/21933152" target="\_blank">21933152</a>, PubMed:<a href="http://www.uniprot.org/citations/22997138" target="\_blank">22997138</a>, PubMed:<a href="http://www.uniprot.org/citations/23142347" target="\_blank">23142347</a>, PubMed:<a href="http://www.uniprot.org/citations/24887587" target="\_blank">24887587</a>, PubMed:<a href="http://www.uniprot.org/citations/34403084" target="\_blank">34403084</a>).

### Cellular Location

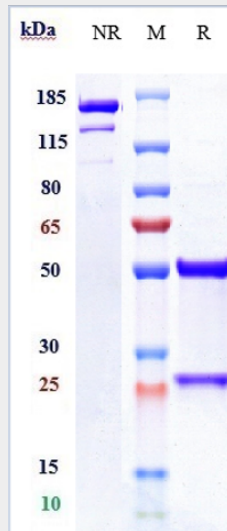
Cell membrane; Lipid-anchor, GPI-anchor

## Anti-NT5E / CD73 Reference Antibody (oleclumab) - Protocols

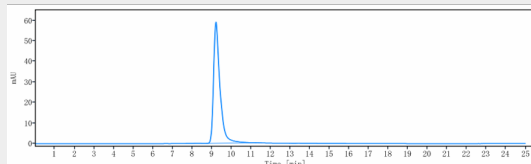
Provided below are standard protocols that you may find useful for product applications.

- [Western Blot](#)
- [Blocking Peptides](#)
- [Dot Blot](#)
- [Immunohistochemistry](#)
- [Immunofluorescence](#)
- [Immunoprecipitation](#)
- [Flow Cytometry](#)
- [Cell Culture](#)

## Anti-NT5E / CD73 Reference Antibody (oleclumab) - Images



Anti-NT5E / CD73 Reference Antibody (oleclumab) on SDS-PAGE under reducing (R) condition. The gel was stained with Coomassie Blue. The purity of the protein is greater than 95%



The purity of Anti-NT5E / CD73 Reference Antibody (oleclumab) is more than 100% ,determined by SEC-HPLC.