

**Anti-ROR1 Reference Antibody (zilovertamab vedotin)
Recombinant Antibody
Catalog # APR10207****Specification**

Anti-ROR1 Reference Antibody (zilovertamab vedotin) - Product Information

Application	FC, Kinetics, Animal Model
Primary Accession	Q01973
Reactivity	Human
Clonality	Monoclonal
Isotype	IgG1
Calculated MW	145.12 KDa

Anti-ROR1 Reference Antibody (zilovertamab vedotin) - Additional Information**Target/Specificity**
ROR1

Endotoxin
< 0.001EU/ µg,determined by LAL method.

Conjugation
MMAE

Expression system
CHO Cell

Format
Purified monoclonal antibody supplied in PBS, pH6.0, without preservative.This antibody is purified through a protein A column.

Anti-ROR1 Reference Antibody (zilovertamab vedotin) - Protein Information

Name ROR1

Synonyms NTRKR1

Function
Has very low kinase activity in vitro and is unlikely to function as a tyrosine kinase in vivo (PubMed:25029443). Receptor for ligand WNT5A which activate downstream NFκB signaling pathway and may result in the inhibition of WNT3A-mediated signaling (PubMed:25029443, PubMed:27162350). In inner ear, crucial for spiral ganglion neurons to innervate auditory hair cells (PubMed:27162350). Via IGFBP5 ligand, forms a complex with ERBB2 to enhance CREB oncogenic signaling (PubMed:36949068).

Cellular Location

Membrane; Single- pass type I membrane protein. Cell projection, axon
{ECO:0000250|UniProtKB:Q9Z139}

Tissue Location

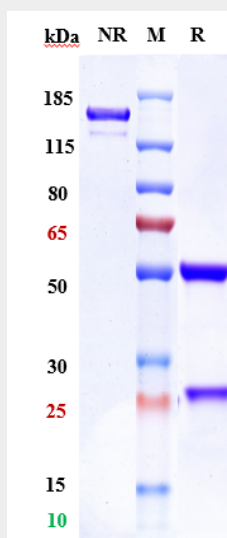
Expressed strongly in human heart, lung and kidney, but weakly in the CNS. Isoform Short is strongly expressed in fetal and adult CNS and in a variety of human cancers, including those originating from CNS or PNS neuroectoderm

Anti-ROR1 Reference Antibody (zilovetamab vedotin) - Protocols

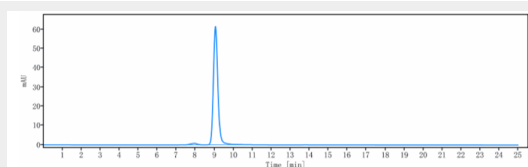
Provided below are standard protocols that you may find useful for product applications.

- [Western Blot](#)
- [Blocking Peptides](#)
- [Dot Blot](#)
- [Immunohistochemistry](#)
- [Immunofluorescence](#)
- [Immunoprecipitation](#)
- [Flow Cytometry](#)
- [Cell Culture](#)

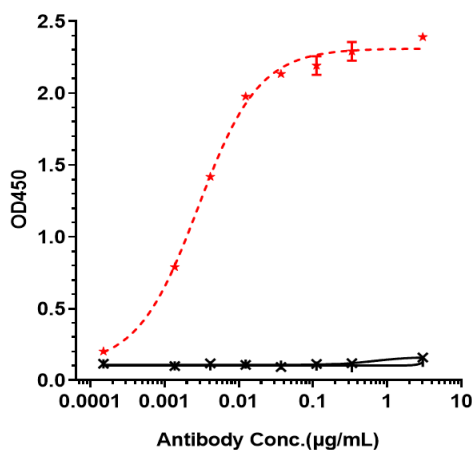
Anti-ROR1 Reference Antibody (zilovetamab vedotin) - Images



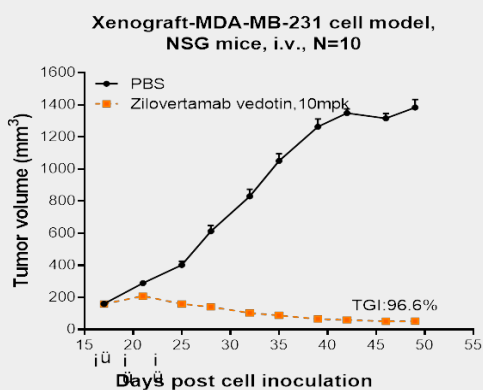
Anti-ROR1 Reference Antibody (zilovetamab vedotin) on SDS-PAGE under reducing (R) condition. The gel was stained with Coomassie Blue. The purity of the protein is greater than 95%



The purity of Anti-ROR1 Reference Antibody (zilovetamab vedotin) is more than 98.21%, determined by SEC-HPLC.



Immobilized human ROR1 His at 2 µg/mL can bind Anti-ROR1 Reference Antibody (zilovetamab vedotin) $EC_{50}=0.002833$ µg/mL



zilovetamab vedotin inhibited the tumor growth of MDA-MB-231 on NSG mice. The result showed significant anti-tumor effects, with a tumor inhibition rate (TGI) of 96.6% at 10 mpk.