

**Anti-SLITRK6 Reference Antibody (sirtratumab)  
Recombinant Antibody  
Catalog # APR10212****Specification**

---

**Anti-SLITRK6 Reference Antibody (sirtratumab) - Product Information**

Application	FC, Kinetics, Animal Model
Primary Accession	<a href="#">Q9H5Y7</a>
Reactivity	Human
Clonality	Monoclonal
Isotype	IgG2SA
Calculated MW	145 KDa

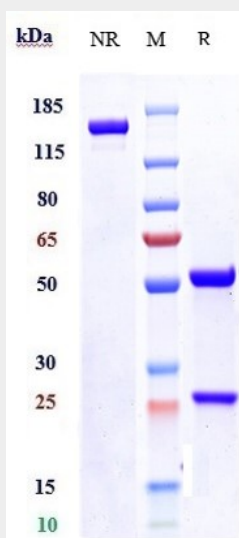
**Anti-SLITRK6 Reference Antibody (sirtratumab) - Additional Information****Target/Specificity**  
SLITRK6**Endotoxin**  
< 0.001EU/ µg,determined by LAL method.**Conjugation**  
Unconjugated**Expression system**  
CHO Cell**Format**  
Purified monoclonal antibody supplied in PBS, pH6.0, without preservative.This antibody is purified through a protein A column.**Anti-SLITRK6 Reference Antibody (sirtratumab) - Protein Information****Name** SLITRK6**Function**  
Regulator of neurite outgrowth required for normal hearing and vision.**Cellular Location**  
Cell membrane; Single-pass type I membrane protein**Tissue Location**  
In adult brain, highly expressed in putamen with no expression in cerebral cortex. Expressed in adult and fetal lung and fetal liver. Also expressed at high levels in some brain tumors including medulloblastomas and primitive neuroectodermal tumors

## Anti-SLITRK6 Reference Antibody (sirtratumab) - Protocols

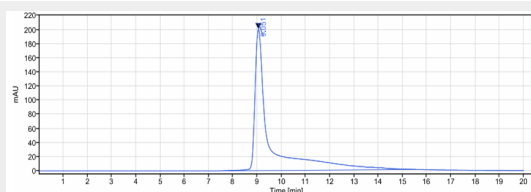
Provided below are standard protocols that you may find useful for product applications.

- [Western Blot](#)
- [Blocking Peptides](#)
- [Dot Blot](#)
- [Immunohistochemistry](#)
- [Immunofluorescence](#)
- [Immunoprecipitation](#)
- [Flow Cytometry](#)
- [Cell Culture](#)

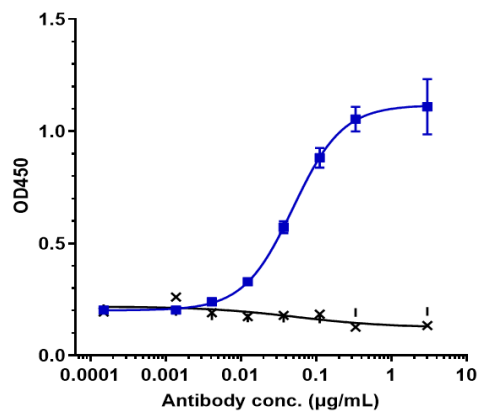
## Anti-SLITRK6 Reference Antibody (sirtratumab) - Images



Anti-SLITRK6 Reference Antibody (sirtratumab) on SDS-PAGE under reducing (R) condition. The gel was stained with Coomassie Blue. The purity of the protein is greater than 95%



The purity of Anti-SLITRK6 Reference Antibody (sirtratumab) is more than 100% ,determined by SEC-HPLC.



Immobilized human SLITRK6 His at 2 µg/mL can bind Anti-SLITRK6 Reference Antibody (sirtratumab)  $EC_{50}=0.04938$  µg/mL