

**Anti-STAB1 Reference Antibody (bexmarilimab)  
Recombinant Antibody  
Catalog # APR10213****Specification**

---

**Anti-STAB1 Reference Antibody (bexmarilimab) - Product Information**

Application	FC, E, FTA
Primary Accession	<a href="#">O9NY15</a>
Reactivity	Human
Clonality	Monoclonal
Isotype	IgG4
Calculated MW	146.22 KDa

**Anti-STAB1 Reference Antibody (bexmarilimab) - Additional Information****Target/Specificity**  
STAB1**Endotoxin**  
< 0.001EU/ µg,determined by LAL method.**Conjugation**  
Unconjugated**Expression system**  
CHO Cell**Format**  
Purified monoclonal antibody supplied in PBS, pH6.0, without preservative.This antibody is purified through a protein A column.**Anti-STAB1 Reference Antibody (bexmarilimab) - Protein Information****Name** STAB1**Synonyms** FEEL1, KIAA0246**Function**  
Acts as a scavenger receptor for acetylated low density lipoprotein. Binds to both Gram-positive and Gram-negative bacteria and may play a role in defense against bacterial infection. When inhibited in endothelial tube formation assays, there is a marked decrease in cell-cell interactions, suggesting a role in angiogenesis. Involved in the delivery of newly synthesized CHID1/SI-CLP from the biosynthetic compartment to the endosomal/lysosomal system.**Cellular Location**  
Membrane; Single-pass type I membrane protein**Tissue Location**

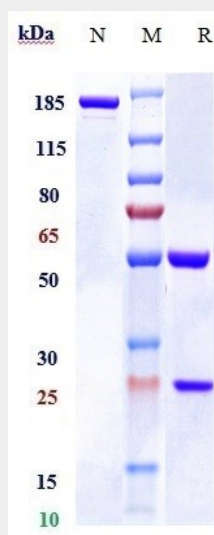
High levels found in spleen, lymph node, liver and placenta. Also expressed in endothelial cells

### Anti-STAB1 Reference Antibody (bexmarilimab) - Protocols

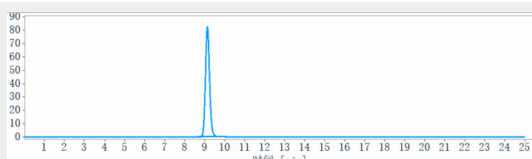
Provided below are standard protocols that you may find useful for product applications.

- [Western Blot](#)
- [Blocking Peptides](#)
- [Dot Blot](#)
- [Immunohistochemistry](#)
- [Immunofluorescence](#)
- [Immunoprecipitation](#)
- [Flow Cytometry](#)
- [Cell Culture](#)

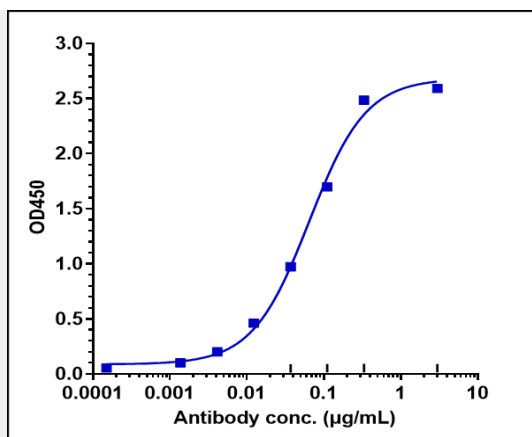
### Anti-STAB1 Reference Antibody (bexmarilimab) - Images



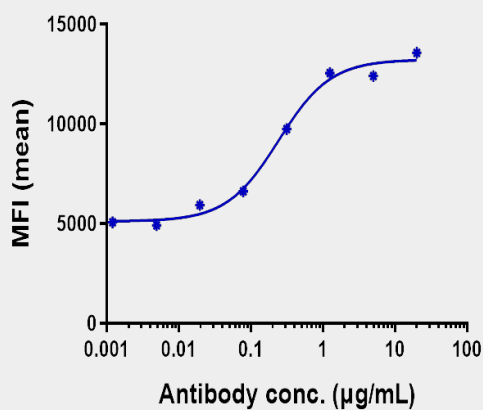
Anti-STAB1 Reference Antibody (bexmarilimab) on SDS-PAGE under reducing (R) condition. The gel was stained with Coomassie Blue. The purity of the protein is greater than 95%



The purity of Anti-STAB1 Reference Antibody (bexmarilimab) is more than 100% ,determined by SEC-HPLC.



Immobilized human STAB His at 2 µg/mL can bind Anti-STAB1 Reference Antibody (bexmarilimab)  $EC_{50}=0.06461$  µg/mL



Human STAB A4 HEK293 cells were stained with Anti-STAB1 Reference Antibody (bexmarilimab) and negative control protein respectively, washed and then followed by PE and analyzed with FACS,  $EC_{273}=0.2417$  µg/mL