

Anti-VEGFC Reference Antibody (VGX100)
Recombinant Antibody
Catalog # APR10218**Specification**

Anti-VEGFC Reference Antibody (VGX100) - Product Information

Application	FC, Kinetics, Animal Model
Primary Accession	P49767
Reactivity	Human
Clonality	Monoclonal
Isotype	IgG1
Calculated MW	143.6 KDa

Anti-VEGFC Reference Antibody (VGX100) - Additional Information**Target/Specificity**
VEGFC**Endotoxin**
< 0.001EU/ µg,determined by LAL method.**Conjugation**
Unconjugated**Expression system**
CHO Cell**Format**
Purified monoclonal antibody supplied in PBS, pH6.0, without preservative.This antibody is purified through a protein A column.**Anti-VEGFC Reference Antibody (VGX100) - Protein Information****Name** VEGFC**Function**
Growth factor active in angiogenesis, and endothelial cell growth, stimulating their proliferation and migration and also has effects on the permeability of blood vessels. May function in angiogenesis of the venous and lymphatic vascular systems during embryogenesis, and also in the maintenance of differentiated lymphatic endothelium in adults. Binds and activates KDR/VEGFR2 and FLT4/VEGFR3 receptors.**Cellular Location**
Secreted.**Tissue Location**
Expressed in the spleen (PubMed:8700872, PubMed:9247316). Expressed in the lymph node, thymus, appendix and bone marrow (PubMed:9247316). Expressed in the heart, placenta, skeletal

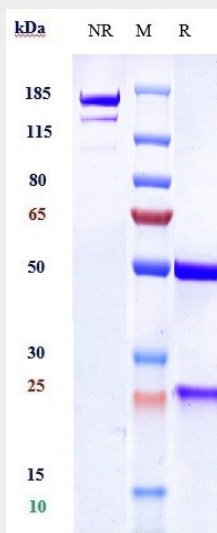
muscle, ovary and small intestine (PubMed:8617204, PubMed:8700872) Expressed in the prostate, testis and colon (PubMed:8700872)

Anti-VEGFC Reference Antibody (VGX100) - Protocols

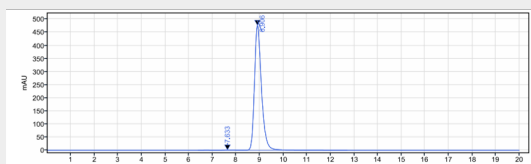
Provided below are standard protocols that you may find useful for product applications.

- [Western Blot](#)
- [Blocking Peptides](#)
- [Dot Blot](#)
- [Immunohistochemistry](#)
- [Immunofluorescence](#)
- [Immunoprecipitation](#)
- [Flow Cytometry](#)
- [Cell Culture](#)

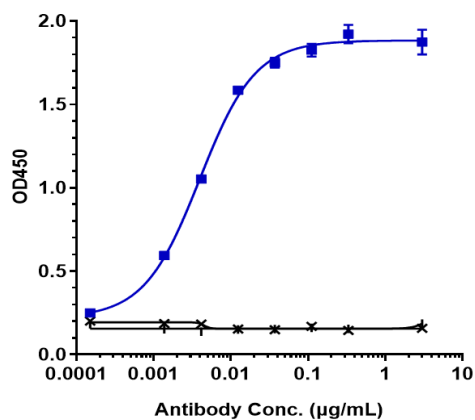
Anti-VEGFC Reference Antibody (VGX100) - Images



Anti-VEGFC Reference Antibody (VGX100) on SDS-PAGE under reducing (R) condition. The gel was stained with Coomassie Blue. The purity of the protein is greater than 95%



The purity of Anti-VEGFC Reference Antibody (VGX100) is more than 95% ,determined by SEC-HPLC.



Immobilized human VEGFC His at 2 µg/mL can bind Anti-VEGFC Reference Antibody (VGX100) $EC_{50}=0.003942$ µg/mL