

Anti-TGFb1 Reference Antibody (M7824)
Recombinant Antibody
Catalog # APR10250**Specification**

Anti-TGFb1 Reference Antibody (M7824) - Product Information

Application	FC, Kinetics, Animal Model
Primary Accession	P01137
Reactivity	Human, Mouse
Clonality	Monoclonal
Isotype	IgG1
Calculated MW	178 KDa

Anti-TGFb1 Reference Antibody (M7824) - Additional Information**Target/Specificity**
TGFb1**Endotoxin**
< 0.001EU/ µg,determined by LAL method.**Conjugation**
Unconjugated**Expression system**
CHO Cell**Format**
Purified monoclonal antibody supplied in PBS, pH6.0, without preservative.This antibody is purified through a protein A column.**Anti-TGFb1 Reference Antibody (M7824) - Protein Information****Name** TGFB1 ([HGNC:11766](#))**Synonyms** TGFB**Function**
Transforming growth factor beta-1 proprotein: Precursor of the Latency-associated peptide (LAP) and Transforming growth factor beta-1 (TGF-beta-1) chains, which constitute the regulatory and active subunit of TGF-beta-1, respectively.**Cellular Location**
[Latency-associated peptide]: Secreted, extracellular space, extracellular matrix**Tissue Location**
Highly expressed in bone (PubMed:11746498, PubMed:17827158). Abundantly expressed in articular cartilage and chondrocytes and is increased in osteoarthritis (OA) (PubMed:11746498,

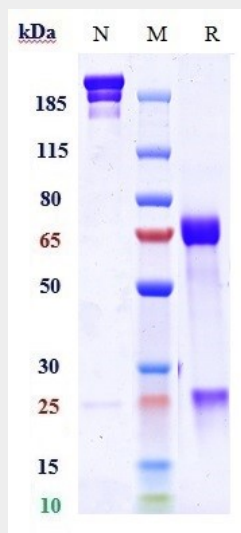
PubMed:17827158). Colocalizes with ASPN in chondrocytes within OA lesions of articular cartilage (PubMed:17827158)

Anti-TGFb1 Reference Antibody (M7824) - Protocols

Provided below are standard protocols that you may find useful for product applications.

- [Western Blot](#)
- [Blocking Peptides](#)
- [Dot Blot](#)
- [Immunohistochemistry](#)
- [Immunofluorescence](#)
- [Immunoprecipitation](#)
- [Flow Cytometry](#)
- [Cell Culture](#)

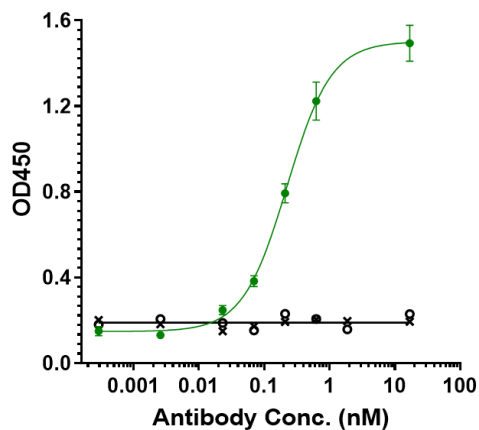
Anti-TGFb1 Reference Antibody (M7824) - Images



Anti-TGFb1 Reference Antibody (M7824) on SDS-PAGE under reducing (R) condition. The gel was stained with Coomassie Blue. The purity of the protein is greater than 90.7%



The purity of Anti-TGFb1 Reference Antibody (M7824) is more than 96.19% ,determined by SEC-HPLC.



Immobilized human PD L1 FC at 2 $\mu\text{g/mL}$ can bind Anti-TGFb1 Reference Antibody (M7824) \square $\text{EC}_{50}=0.2227 \mu\text{g/mL}$