

**Anti-IL-6 / IFN $\beta$ 2 Reference Antibody (siltuximab)  
Recombinant Antibody  
Catalog # APR10267****Specification**

---

**Anti-IL-6 / IFN $\beta$ 2 Reference Antibody (siltuximab) - Product Information**

Application	<b>FC, Kinetics, Animal Model</b>
Primary Accession	<a href="#">P05231</a>
Reactivity	<b>Human</b>
Clonality	<b>Monoclonal</b>
Isotype	<b>IgG1</b>
Calculated MW	<b>144.98 KDa</b>

**Anti-IL-6 / IFN $\beta$ 2 Reference Antibody (siltuximab) - Additional Information****Target/Specificity**IL-6 / IFN $\beta$ 2**Endotoxin**< 0.001EU/  $\mu$ g, determined by LAL method.**Conjugation**

Unconjugated

**Expression system**

CHO Cell

**Format**

Purified monoclonal antibody supplied in PBS, pH6.0, without preservative. This antibody is purified through a protein A column.

**Anti-IL-6 / IFN $\beta$ 2 Reference Antibody (siltuximab) - Protein Information****Name** IL6 ([HGNC:6018](#))**Synonyms** IFNB2**Function**

Cytokine with a wide variety of biological functions in immunity, tissue regeneration, and metabolism. Binds to IL6R, then the complex associates to the signaling subunit IL6ST/gp130 to trigger the intracellular IL6-signaling pathway (Probable). The interaction with the membrane-bound IL6R and IL6ST stimulates 'classic signaling', whereas the binding of IL6 and soluble IL6R to IL6ST stimulates 'trans- signaling'. Alternatively, 'cluster signaling' occurs when membrane- bound IL6:IL6R complexes on transmitter cells activate IL6ST receptors on neighboring receiver cells (Probable).

**Cellular Location**

Secreted.

### Tissue Location

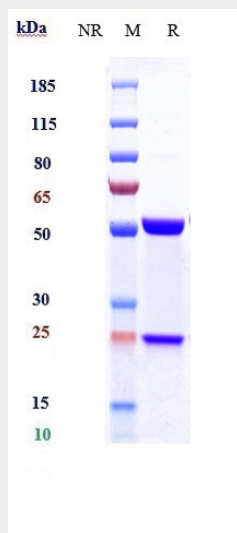
Produced by skeletal muscle.

### Anti-IL-6 / IFN $\beta$ 2 Reference Antibody (siltuximab) - Protocols

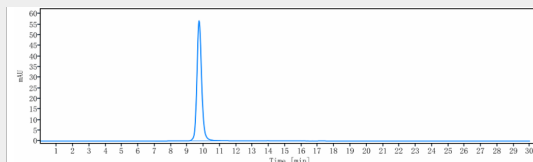
Provided below are standard protocols that you may find useful for product applications.

- [Western Blot](#)
- [Blocking Peptides](#)
- [Dot Blot](#)
- [Immunohistochemistry](#)
- [Immunofluorescence](#)
- [Immunoprecipitation](#)
- [Flow Cytometry](#)
- [Cell Culture](#)

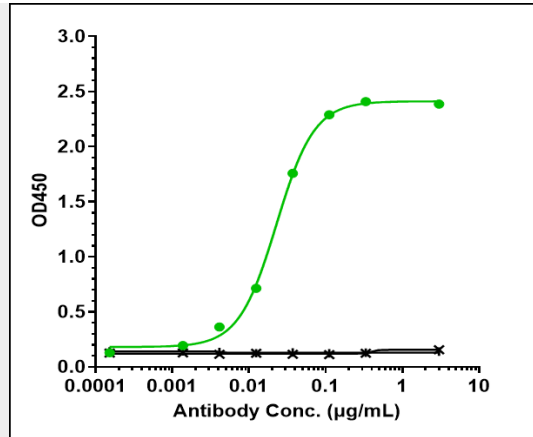
### Anti-IL-6 / IFN $\beta$ 2 Reference Antibody (siltuximab) - Images



Anti-IL-6 / IFN $\beta$ 2 Reference Antibody (siltuximab) on SDS-PAGE under reducing (R) condition. The gel was stained with Coomassie Blue. The purity of the protein is greater than 95%



The purity of Anti-IL-6 / IFN $\beta$ 2 Reference Antibody (siltuximab) is more than 100% ,determined by SEC-HPLC.



Immobilized human IL-6 His at 2 µg/mL can bind Anti-IL-6 / IFN $\beta$ 2 Reference Antibody (siltuximab)  $\square$ EC50=0.02278 µg/mL