

**Anti-PDCD1 / PD-1 / CD279 Reference Antibody (tislelizumab)
Recombinant Antibody
Catalog # APR10274****Specification****Anti-PDCD1 / PD-1 / CD279 Reference Antibody (tislelizumab) - Product Information**

Application	FC, Kinetics, Animal Model
Primary Accession	Q15116
Reactivity	Human
Clonality	Monoclonal
Isotype	IgG4SP
Calculated MW	145 KDa

Anti-PDCD1 / PD-1 / CD279 Reference Antibody (tislelizumab) - Additional Information**Target/Specificity**

PDCD1 / PD-1 / CD279

Endotoxin

< 0.001EU/ µg,determined by LAL method.

Conjugation

Unconjugated

Expression system

CHO Cell

Format

Purified monoclonal antibody supplied in 0.1M Glycine,0.2M NaCl,(tris),pH6.0, without preservative.This antibody is purified through a protein A column.

Anti-PDCD1 / PD-1 / CD279 Reference Antibody (tislelizumab) - Protein Information**Name** PDCD1 {ECO:0000303|PubMed:7851902, ECO:0000312|HGNC:HGNC:8760}**Function**

Inhibitory receptor on antigen activated T-cells that plays a critical role in induction and maintenance of immune tolerance to self (PubMed:21276005, PubMed:37208329). Delivers inhibitory signals upon binding to ligands CD274/PDCD1L1 and CD273/PDCD1LG2 (PubMed:21276005). Following T-cell receptor (TCR) engagement, PDCD1 associates with CD3- TCR in the immunological synapse and directly inhibits T-cell activation (By similarity). Suppresses T-cell activation through the recruitment of PTPN11/SHP-2: following ligand-binding, PDCD1 is phosphorylated within the ITSM motif, leading to the recruitment of the protein tyrosine phosphatase PTPN11/SHP-2 that mediates dephosphorylation of key TCR proximal signaling molecules, such as ZAP70, PRKCQ/PKCtheta and CD247/CD3zeta (By similarity).

Cellular Location

Cell membrane; Single-pass type I membrane protein

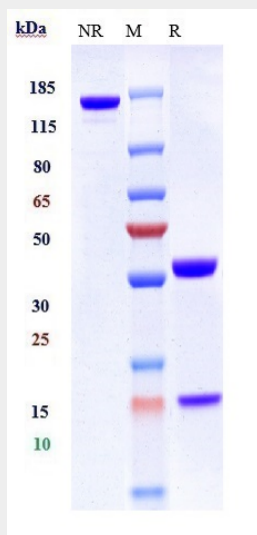
Anti-PDCD1 / PD-1 / CD279 Reference Antibody (tislelizumab) - Protocols

Provided below are standard protocols that you may find useful for product applications.

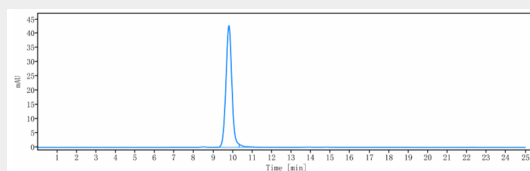
- [Western Blot](#)
- [Blocking Peptides](#)
- [Dot Blot](#)
- [Immunohistochemistry](#)
- [Immunofluorescence](#)
- [Immunoprecipitation](#)

- [Flow Cytometry](#)

- [Cell Culture](#)

Anti-PDCD1 / PD-1 / CD279 Reference Antibody (tislelizumab) - Images

Anti-PDCD1 / PD-1 / CD279 Reference Antibody (tislelizumab) on SDS-PAGE under reducing (R) condition. The gel was stained with Coomassie Blue. The purity of the protein is greater than 90%



The purity of Anti-PDCD1 / PD-1 / CD279 Reference Antibody (tislelizumab) is more than 95%, determined by SEC-HPLC.