

**Anti-IL-1RL2 / IL-36R Reference Antibody (spesolimab)
Recombinant Antibody
Catalog # APR10275****Specification**

Anti-IL-1RL2 / IL-36R Reference Antibody (spesolimab) - Product Information

Application	FC, Kinetics, Animal Model
Primary Accession	Q9HB29
Reactivity	Human
Clonality	Monoclonal
Isotype	IgG1
Calculated MW	145 KDa

Anti-IL-1RL2 / IL-36R Reference Antibody (spesolimab) - Additional Information**Target/Specificity**
IL-1RL2 / IL-36R**Endotoxin**
< 0.001EU/ µg,determined by LAL method.**Conjugation**
Unconjugated**Expression system**
CHO Cell**Format**
Purified monoclonal antibody supplied in 100mM Pro-Ac, 20mM Arg, pH5.0, without preservative.This antibody is purified through a protein A column.**Anti-IL-1RL2 / IL-36R Reference Antibody (spesolimab) - Protein Information****Name** IL1RL2**Synonyms** IL1RRP2**Function**
Receptor for interleukin-36 (IL36A, IL36B and IL36G). After binding to interleukin-36 associates with the coreceptor IL1RAP to form the interleukin-36 receptor complex which mediates interleukin-36- dependent activation of NF-kappa-B, MAPK and other pathways (By similarity). The IL-36 signaling system is thought to be present in epithelial barriers and to take part in local inflammatory response; it is similar to the IL-1 system. Seems to be involved in skin inflammatory response by induction of the IL-23/IL-17/IL-22 pathway.**Cellular Location**
Membrane; Single-pass type I membrane protein

Tissue Location

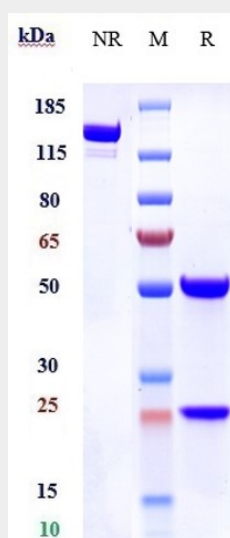
Expressed in synovial fibroblasts and articular chondrocytes. Expressed in keratinocytes and monocyte-derived dendritic cells. Expressed in monocytes and myeloid dendritic cells; at protein level.

Anti-IL-1RL2 / IL-36R Reference Antibody (spesolimab) - Protocols

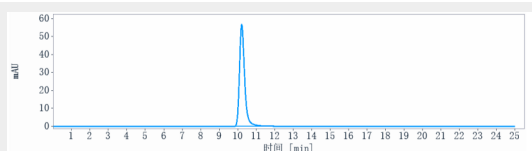
Provided below are standard protocols that you may find useful for product applications.

- [Western Blot](#)
- [Blocking Peptides](#)
- [Dot Blot](#)
- [Immunohistochemistry](#)
- [Immunofluorescence](#)
- [Immunoprecipitation](#)
- [Flow Cytometry](#)
- [Cell Culture](#)

Anti-IL-1RL2 / IL-36R Reference Antibody (spesolimab) - Images



Anti-IL-1RL2 / IL-36R Reference Antibody (spesolimab) on SDS-PAGE under reducing (R) condition. The gel was stained with Coomassie Blue. The purity of the protein is greater than 90%



The purity of Anti-IL-1RL2 / IL-36R Reference Antibody (spesolimab) is more than 95% ,determined by SEC-HPLC.