

**Anti-ERBB2 / HER2 / CD340 Reference Antibody (zanidatamab)
Recombinant Antibody
Catalog # APR10277****Specification**

Anti-ERBB2 / HER2 / CD340 Reference Antibody (zanidatamab) - Product Information

Application	FC, E, FTA
Primary Accession	P04626
Reactivity	Human
Clonality	Monoclonal
Isotype	IgG1
Calculated MW	148.28 KDa

Anti-ERBB2 / HER2 / CD340 Reference Antibody (zanidatamab) - Additional Information

Target/Specificity
ERBB2 / HER2 / CD340

Endotoxin
< 0.001EU/ µg,determined by LAL method.

Conjugation
Unconjugated

Expression system
CHO Cell

Format
Purified monoclonal antibody supplied in 100mM Pro-Ac, 20mM Arg, pH5.0, without preservative.This antibody is purified through a protein A column.

Storage
-80°C for 2 years under sterile conditions □ -20°C for 1 year under sterile conditions □ Avoid repeated freeze-thaw cycles.

Anti-ERBB2 / HER2 / CD340 Reference Antibody (zanidatamab) - Protein Information

Name ERBB2

Synonyms HER2, MLN19, NEU, NGL

Function
Protein tyrosine kinase that is part of several cell surface receptor complexes, but that apparently needs a coreceptor for ligand binding. Essential component of a neuregulin-receptor complex, although neuregulins do not interact with it alone. GP30 is a potential ligand for this receptor. Regulates outgrowth and stabilization of peripheral microtubules (MTs). Upon ERBB2 activation, the MEMO1-RHOA-DIAPH1 signaling pathway elicits the phosphorylation and thus the inhibition of GSK3B at cell membrane. This prevents the phosphorylation of APC and CLASP2, allowing its

association with the cell membrane. In turn, membrane-bound APC allows the localization of MACF1 to the cell membrane, which is required for microtubule capture and stabilization.

Cellular Location

Cell membrane; Single-pass type I membrane protein. Cell projection, ruffle membrane; Single-pass type I membrane protein. Note=Internalized from the cell membrane in response to EGF stimulation. [Isoform 2]: Cytoplasm. Nucleus.

Tissue Location

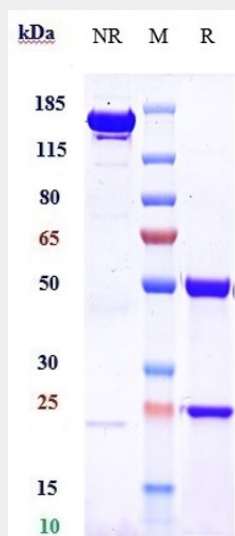
Expressed in a variety of tumor tissues including primary breast tumors and tumors from small bowel, esophagus, kidney and mouth.

Anti-ERBB2 / HER2 / CD340 Reference Antibody (zanidatamab) - Protocols

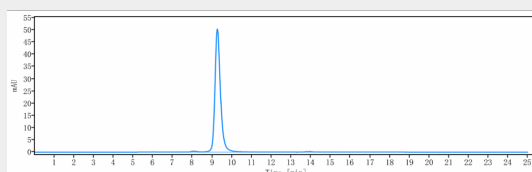
Provided below are standard protocols that you may find useful for product applications.

- [Western Blot](#)
- [Blocking Peptides](#)
- [Dot Blot](#)
- [Immunohistochemistry](#)
- [Immunofluorescence](#)
- [Immunoprecipitation](#)
- [Flow Cytometry](#)
- [Cell Culture](#)

Anti-ERBB2 / HER2 / CD340 Reference Antibody (zanidatamab) - Images



Anti-ERBB2 / HER2 / CD340 Reference Antibody (zanidatamab) on SDS-PAGE under reducing (R) condition. The gel was stained with Coomassie Blue. The purity of the protein is greater than 90%



The purity of Anti-ERBB2 / HER2 / CD340 Reference Antibody (zanidatamab) is more than 99.26%

,determined by SEC-HPLC.