

Anti-SLC2A8 Reference Antibody (VB1-050)
Recombinant Antibody
Catalog # APR10293**Specification**

Anti-SLC2A8 Reference Antibody (VB1-050) - Product Information

Application	FC, E, FTA
Primary Accession	Q9NY64
Reactivity	Human
Clonality	Monoclonal
Isotype	IgG1
Calculated MW	150 KDa

Anti-SLC2A8 Reference Antibody (VB1-050) - Additional Information**Target/Specificity**
SLC2A8**Endotoxin**
< 0.001EU/ µg,determined by LAL method.**Conjugation**
Unconjugated**Expression system**
CHO Cell**Format**
Purified monoclonal antibody supplied in PBS, pH6.0, without preservative.This antibody is purified through a protein A column.**Storage**
-80°C for 2 years under sterile conditions □ -20°C for 1 year under sterile conditions □ Avoid repeated freeze-thaw cycles.**Anti-SLC2A8 Reference Antibody (VB1-050) - Protein Information****Name** SLC2A8 ([HGNC:13812](#))**Function**
Insulin-regulated facilitative hexose transporter that mediates the transport of glucose and fructose (By similarity). Facilitates hepatic influx of dietary trehalose, which in turn inhibits glucose and fructose influx triggering a starvation signal and hepatic autophagy through activation of AMPK and ULK1 (PubMed:27922102). Also able to mediate the transport of dehydroascorbate.**Cellular Location**
Cell membrane {ECO:0000250|UniProtKB:Q9JJZ1}; Multi-pass membrane protein. Cytoplasmic

vesicle membrane {ECO:0000250|UniProtKB:Q9JJZ1}; Multi-pass membrane protein.
Note=Principally intracellular. May move between intracellular vesicles and the plasma membrane. The dileucine internalization motif is critical for intracellular sequestration {ECO:0000250|UniProtKB:Q9JJZ1}

Tissue Location

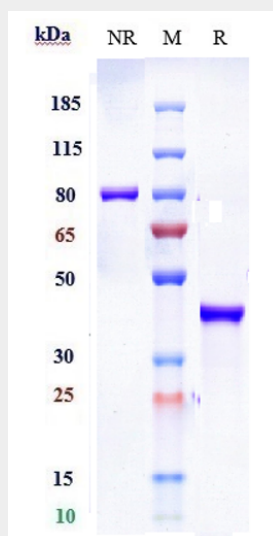
Highly expressed in testis, but not in testicular carcinoma. Lower amounts present in most other tissues

Anti-SLC2A8 Reference Antibody (VB1-050) - Protocols

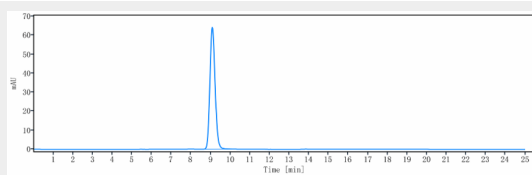
Provided below are standard protocols that you may find useful for product applications.

- [Western Blot](#)
- [Blocking Peptides](#)
- [Dot Blot](#)
- [Immunohistochemistry](#)
- [Immunofluorescence](#)
- [Immunoprecipitation](#)
- [Flow Cytometry](#)
- [Cell Culture](#)

Anti-SLC2A8 Reference Antibody (VB1-050) - Images



Anti-SLC2A8 Reference Antibody (VB1-050) on SDS-PAGE under reducing (R) condition. The gel was stained with Coomassie Blue. The purity of the protein is greater than 90%



The purity of Anti-SLC2A8 Reference Antibody (VB1-050) is more than 95% ,determined by SEC-HPLC.