

**Anti-CD28 Reference Antibody (Theralizumab)
Recombinant Antibody
Catalog # APR10315****Specification**

Anti-CD28 Reference Antibody (Theralizumab) - Product Information

Application	FC, E, FTA
Primary Accession	P10747
Reactivity	Human
Clonality	Monoclonal
Isotype	IgG4
Calculated MW	146.22 KDa

Anti-CD28 Reference Antibody (Theralizumab) - Additional Information**Target/Specificity**
CD28**Endotoxin**
< 0.001EU/ µg,determined by LAL method.**Conjugation**
Unconjugated**Expression system**
CHO Cell**Format**
Purified monoclonal antibody supplied in PBS, pH6.0, without preservative.This antibody is purified through a protein A column.**Storage**
-80°C for 2 years under sterile conditions □ -20°C for 1 year under sterile conditions □ Avoid repeated freeze-thaw cycles.**Anti-CD28 Reference Antibody (Theralizumab) - Protein Information****Name** CD28**Function**
Involved in T-cell activation, the induction of cell proliferation and cytokine production and promotion of T-cell survival. Enhances the production of IL4 and IL10 in T-cells in conjunction with TCR/CD3 ligation and CD40L costimulation (PubMed:8617933). Isoform 3 enhances CD40L-mediated activation of NF-kappa-B and kinases MAPK8 and PAK2 in T-cells (PubMed:15067037).**Cellular Location**

Membrane; Single-pass type I membrane protein.

Tissue Location

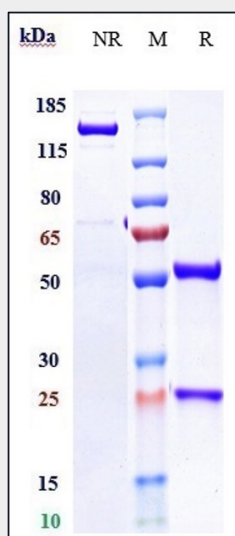
Expressed in T-cells and plasma cells, but not in less mature B-cells

Anti-CD28 Reference Antibody (Theralizumab) - Protocols

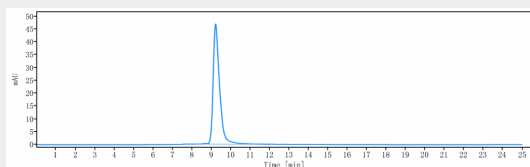
Provided below are standard protocols that you may find useful for product applications.

- [Western Blot](#)
- [Blocking Peptides](#)
- [Dot Blot](#)
- [Immunohistochemistry](#)
- [Immunofluorescence](#)
- [Immunoprecipitation](#)
- [Flow Cytometry](#)
- [Cell Culture](#)

Anti-CD28 Reference Antibody (Theralizumab) - Images



Anti-CD28 Reference Antibody (Theralizumab) on SDS-PAGE under reducing (R) condition. The gel was stained with Coomassie Blue. The purity of the protein is greater than 95%



The purity of Anti-CD28 Reference Antibody (Theralizumab) is more than 98.72%, determined by SEC-HPLC.